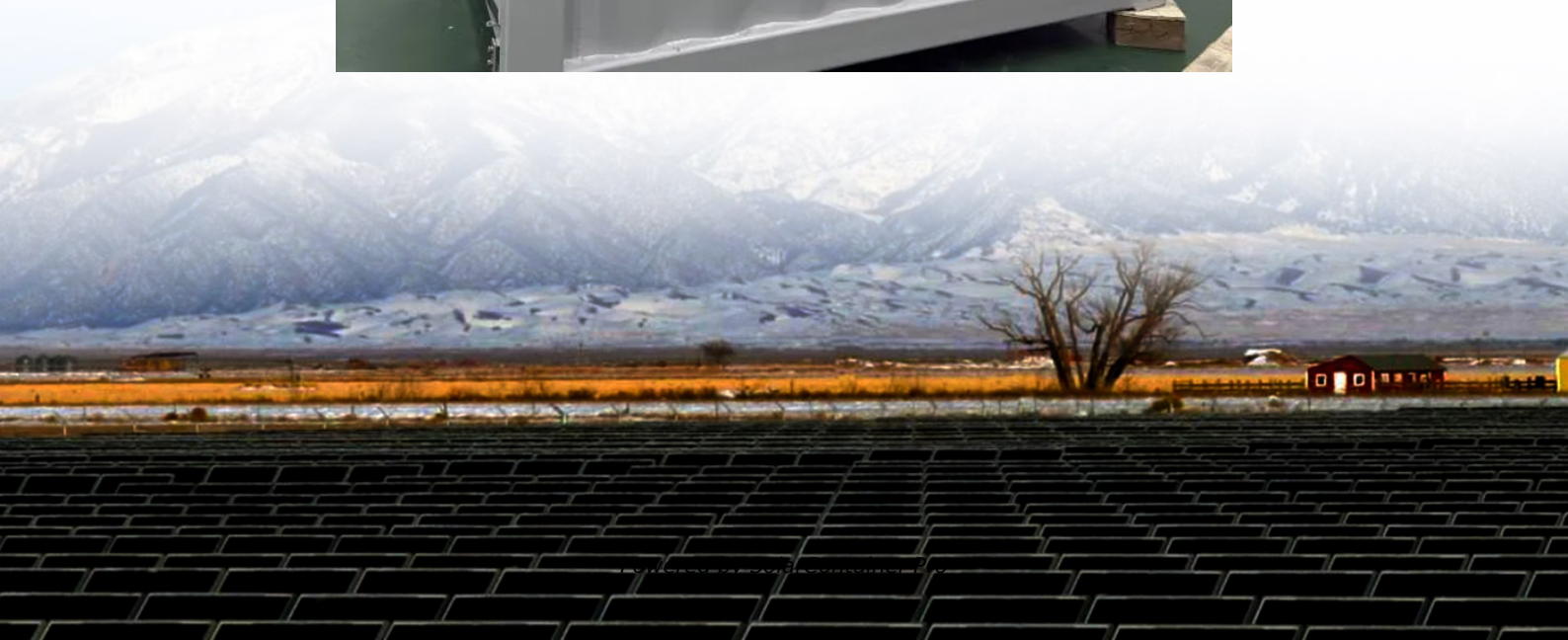


# How many watts does a 580 solar panel have





## Overview

---

To summarize, the total wattage output of 580 solar panels is contingent upon the wattage of each individual panel, with industry standards estimating a range of between 145,000 watts to 232,000 watts based on the efficiency of the technology employed and environmental conditions. How big is a 580 watt solar panel?

The size of the 580-watt solar panel depends on its efficiency. The higher it is, the smaller the panel. On average, a panel of this power output is roughly 95 by 45 inches in dimensions. This translates to about 30 square feet of area required for one panel.

Are 580 watt solar panels better than lower wattage solar panels?

580-watt solar panels offer several advantages over lower-wattage panels: Higher energy output: They generate more electricity per panel, reducing the number of panels required for a given energy output. Reduced installation costs: Fewer panels translate to lower installation costs, including labor, materials, and permitting fees.

Do 580 watt solar panels need a lot of space?

Ground-mounted type of system is best when it comes to large panels such as a 580-watt one. However, it needs a lot of free space, tends to get dirty quicker and sometimes costs more. How many 580 watt solar panels do I need?

The number of 580-watt solar panels required for a specific installation depends on several factors:.

What are the different types of 580 watt solar panels?

The 580-watt solar panels are typically represented in two primary types: Monofacial: Monofacial panels capture sunlight from one side only and are the most common type of roof-mounted solar panels. Monofacial panels often have a more uniform and aesthetically pleasing appearance.



How do I determine the required wattage for my solar panel system?

Determining the required wattage for your solar panel system involves several key considerations: Energy consumption: Calculate your average daily electricity usage in kilowatt-hours (kWh) based on your household's needs.

How much energy does a 100 watt solar panel produce?

The daily energy production of a 100-watt solar panel is influenced by the amount of sunlight it receives. On average, you can expect: Assuming 5 peak sun hours:  $100W \times 5 \text{ hours} = 500 \text{ watt-hours (0.5 kWh)}$  per day. In optimal conditions: The panel may produce up to 600-700 watt-hours (0.6-0.7 kWh) daily.



## How many watts does a 580 solar panel have

---



### [Standard Solar Panel Sizes And Wattages \(100W-500W ...](#)

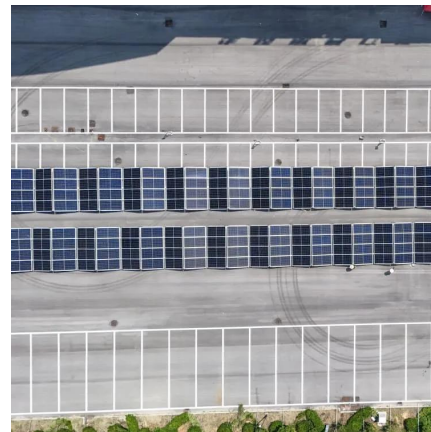
To bridge that gap of very useful knowledge needed, we have compared and averaged the sizes of 100-watt to 500-watt solar panels available on the market. The goal here is to get to the ...

[WhatsApp](#)

### **580 Watt Solar panels for sale , Prices, dimensions, weight, ...**

Macsun Solar 580 Watt Region: China Features: Half Cell (half cut) / High Power (High wattage) / Low Light Irradiance / Monocrystalline / Severe Weather Resistant

[WhatsApp](#)



### [How many watts does a 580 solar panel have](#)

A 580W solar panel is a robust choice for both residential and commercial solar installations. These panels are designed to generate a significant amount of energy,& #32;with each panel ...

[WhatsApp](#)

### [MEGA 580 BIFACIAL , 580 Watt Bifacial Solar Panel](#)

The MEGA 580 solar panel delivers 550W of high-efficiency power with TOPCON technology, durable aluminum frame, and AR-coated



glass--ideal for off-grid residential, agricultural,  
or ...

[WhatsApp](#)



## Contact Us

---

For catalog requests, pricing, or partnerships, please visit:  
<https://www.straighta.co.za>