

How many watts does a 1 5a solar panel have





Overview

This means the panel can produce 100 watts of power under optimal conditions. Since optimal conditions are impossible to achieve at all times, I usually recommend to estimate a 70-80% efficiency when calculating how much solar you need for a specific application. How much power can a solar panel produce?

Understanding wattage is essential for determining how much energy a solar panel can produce and, consequently, how much power your devices or appliances can draw from it. For example, a solar panel with a voltage of 20V and an amperage of 5A has a wattage of 100W. This means the panel can produce 100 watts of power under optimal conditions.

How to calculate solar panel wattage?

Also Check: – Hand Drying Footprint Calculator Calculating solar panel wattage involves a series of methodical steps: Determine the panel specifications: Locate the V_{mp} and I_{mp} values, which are typically provided on the panel's datasheet. Apply the formula: Multiply V_{mp} by I_{mp} to derive the maximum power output in watts.

How much solar wattage do I Need?

Since optimal conditions are impossible to achieve at all times, I usually recommend to estimate a 70-80% efficiency when calculating how much solar you need for a specific application. Knowing the wattage helps in selecting the right solar panel for your needs and ensuring it can handle the load of your intended applications.

What does wattage mean on a solar panel?

You'll often see it referred to as "Rated Power", "Maximum Power", or " P_{max} ", and it's measured in watts or kilowatts peak (kWp). For example, the nameplate from my solar panel specifies a Wattage output of 100W, meaning that the solar panel is capable of producing 100 Watts of power under ideal conditions.



How many amps does a 500 watt solar panel store?

500-watt solar panel will store 41.6 amps in a 12v battery per hour. 600-watt solar panel will store 50 amps in a 12v battery per hour. Solar Panel Calculator For Battery: What Size Solar Panel Do I Need?

.

What is the wattage rating of a solar panel?

The Wattage rating of a solar panel is the most fundamental rating, representing the maximum power output of the solar panel under ideal conditions. You'll often see it referred to as "Rated Power", "Maximum Power", or "Pmax", and it's measured in watts or kilowatts peak (kWp).



How many watts does a 1 5a solar panel have



Solar Panel Wattage Calculator

This calculator considers variables such as panel efficiency, sunlight intensity, and environmental conditions, allowing for a more accurate prediction of the electricity a solar panel can generate.

[WhatsApp](#)

Solar Basics: Voltage, Amperage & Wattage , The Solar Addict

For example, a solar panel with a voltage of 20V and an amperage of 5A has a wattage of 100W. This means the panel can produce 100 watts of power under optimal ...

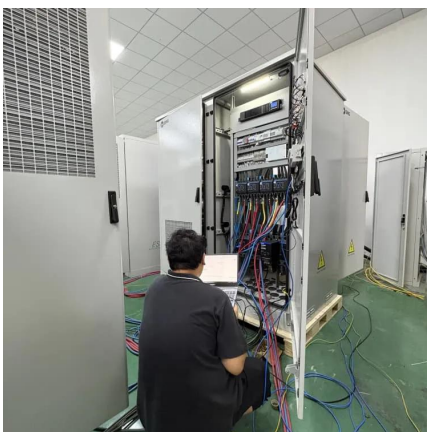
[WhatsApp](#)



[Standard Solar Panel Sizes And Wattages \(100W-500W ...](#)

To bridge that gap of very useful knowledge needed, we have compared and averaged the sizes of 100-watt to 500-watt solar panels available on the market. The goal here is to get to the ...

[WhatsApp](#)



[1.5kW Solar System Information - Facts & Figures](#)

Did you know that 1.5kW solar power systems can consist of a different number of panels depending on the size of the solar panels? Here



are some common panel sizes which could ...

[WhatsApp](#)



Solar Panel Ratings Explained - Wattage, Current, Voltage, and

Solar panel ratings are crucial for understanding how solar panels perform and what they're capable of. Whether you're setting up a DIY system or a larger solar installation, ...

[WhatsApp](#)



[Do Solar Panels Produce Volts? \(Calculations + Examples\)](#)

Solar panels produce volts when exposed to the sun. But, that is only part of the equation. Panels also produce amps. In most cases, panels are rated in watts. Watts are the ...

[WhatsApp](#)



How Much Power Does a Solar Panel Produce? By Wattage, KW ...

In most cases, devices will usually require over 100 volts but below 250 volts. The difference is usually present in amperes. Use the information presented below to see how ...

[WhatsApp](#)

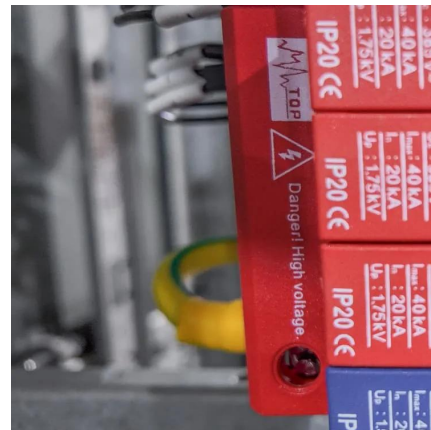




[Solar Panel Size Guide \(with 4 Charts\)](#)

Solar panel sizes are measured in two ways: watt output and physical dimensions. Physical dimensions refer to the height, length and width of the solar array. The wattage refers to how ...

[WhatsApp](#)



[Solar Panel Amps Calculator \(Watts to Amps\) - Dot Watts®](#)

200-watt solar panel will produce 8.85 amps under standard test conditions (STC). How do I calculate solar panel amps? To calculate the amps from watts use this formula. 100 ...

[WhatsApp](#)



Contact Us

For catalog requests, pricing, or partnerships, please visit:
<https://www.straighta.co.za>