

How many watts can a solar cell produce





Overview

A single solar cell can produce up to 0.7 watts of electric power when exposed to sunlight. Solar cells are the fundamental devices that convert solar energy into electrical energy in PV systems. How many Watts Does a solar panel produce?

The optimal solar panels produce 250 to 400 watts of electricity. However, this output can vary based on factors such as the panel type, angle, climate, etc. To calculate the rough estimate of a solar panel's daily watt-hour output, multiply its power in watts by the average hours of direct sunlight.

How many watts can a solar cell make?

Under standard conditions, a cell can make about 0.7 watts. Conditions are 1,000 W/m² sunlight, 25°C, and air mass 1.5. How can the power output of a single solar cell be calculated?

To find a cell's power, you multiply sunlight by cell efficiency. The formula is: Power Output = Solar Irradiance × Solar Cell Efficiency.

How much power does a 1000 watt solar panel produce?

A 1000-Watt Solar Panel Produces quite a bit of power. It produces enough power to run about ten 100-Watt light bulbs for an hour. Of course, the amount of power that a solar panel can produce depends on a few things, like how sunny it is outside and how big the solar panel is.

How much power does a solar panel need?

To find out how much power your panel needs to produce, you would multiply your daily energy consumption by the number of hours of sunlight. So, 160 watts x 6 hours = 960 watts. This means your solar panel needs to produce at least 960 watts of power each day to power all the devices you want.

How many Watts Does a 60 cell solar panel produce?



Most 60-cell solar panels are roughly 5.4 feet tall by 3.25 feet wide and can generate 270 to 300 watts of electricity per panel. On the other hand, 72-cell panels are larger than 60-cell panels because they have an extra row of cells. They're able to produce an average of 350–400 watts.

How much electricity does a solar panel produce a day?

For example, let's say you have a solar panel that's 1 square meter in size and has an efficiency of 15%. If the irradiance in your location is 1,000 watts per square meter and you get 5 hours of sunlight per day, then your solar panel will produce 750 watts of electricity per day.



How many watts can a solar cell produce



How much power can a mini solar panel generate?-sic-solar

For a 10-watt mini solar panel, you can expect to generate around 40-60 watt-hours of electricity on a sunny day. This is enough to charge small devices like smartphones, ...

[WhatsApp](#)

[How Much Power Can One Solar Panel Produce? \(Full Answer\)](#)

How Much Power Can One Solar Panel Produce?
A standard solar panel can produce around 30-40 watts of power. But, the amount of power it produces depends on a few things. The ...

[WhatsApp](#)



[How Much Power Can One Solar Panel Produce? \(Full Answer\)](#)

A 300-watt solar panel will produce 300 watts of power when it is hit by 1000 watts of sunlight. This means that the panel will produce enough power to run a 100-watt light bulb for 3 hours.

[WhatsApp](#)



[How Much Energy Do Solar Panels Produce?](#)

Today, most solar cells are made of silicon and can convert 20 percent or more of the sunlight that hits them into usable energy. This has led to solar panels that are able to generate more ...



[WhatsApp](#)



[Solar Panel Size Guide \(with 4 Charts\)](#)

Solar panel sizes are measured in two ways: watt output and physical dimensions. Physical dimensions refer to the height, length and width of the solar array. The wattage refers to how ...

[WhatsApp](#)



How many watts can a typical solar cell provide? , NenPower

A typical solar cell can provide approximately 250 to 400 watts per panel under optimal conditions, which translates to about 200 to 300 watts of usable energy on average.

[WhatsApp](#)



Solar Panel Wattage Explained: How Many Watts Do You Need?

On average, a solar panel produces around 150 to 200 watts per square meter. This can vary due to: Example: A 1.7 m² panel with 20% efficiency will produce about 340W in full ...

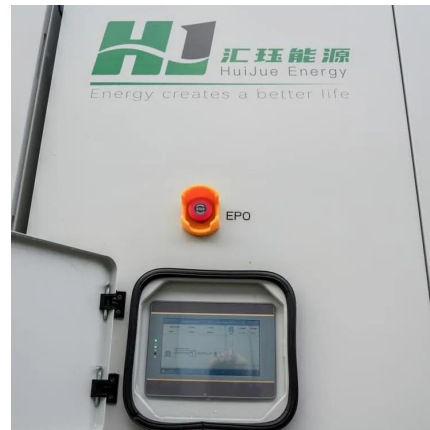
[WhatsApp](#)



[How Much Power Does A Solar Panel Produce?](#)

These days, the latest and best solar panels for residential properties produce between 250 and 400 Watts of electricity. While solar panel systems start at 1 KW and produce between 750 ...

[WhatsApp](#)



[How Much Power Does A 600 Watt Solar Panel Produce?](#)

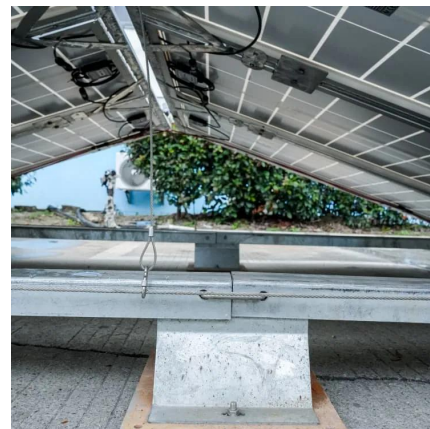
A 600 watt solar panel can produce 14,400 watt-hours per day on average. This is based on the assumption that the panel receives 5 hours of sunlight per day and that each ...

[WhatsApp](#)

Solar Panel Watts Per Square Foot: 'We (Finally) Did The Math'

Here we have a definitive answer; on average, solar panels produce 17.25 watts per square foot. We are going to look at how Tesla's solar roof compares to this average. First of all, let's show ...

[WhatsApp](#)



[Standard Solar Panel Sizes And Wattages \(100W-500W ...\)](#)

As we can see, those 60-cell, 72-cell, and 96-cell solar panel dimensions are a bit theoretical. These are the practical solar panel dimensions by wattage from solar panels that are actually ...

[WhatsApp](#)



[How Much Power Does a Single Solar Cell Produce?](#)

A single solar cell can produce up to 0.7 watts of electric power when exposed to sunlight. Solar cells are the fundamental devices that convert solar energy into electrical ...

[WhatsApp](#)



Contact Us

For catalog requests, pricing, or partnerships, please visit:
<https://www.straighta.co.za>