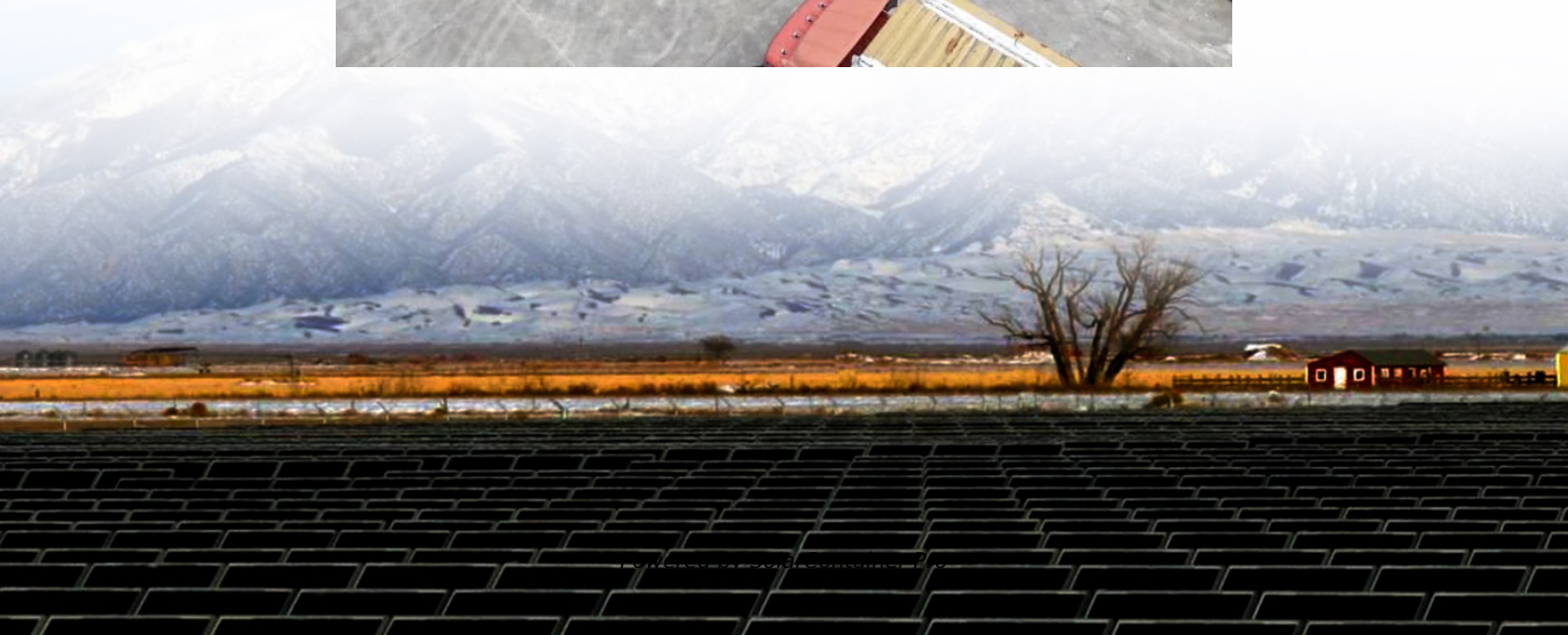


How many watts are there in 38 solar panels





Overview

Average solar panel capacity typically ranges from 250 to 400 watts, 2. Thus, 38 panels rated at 300 watts would generate approximately 11,400 watts, 3. If the capacity is higher, say 400 watts per panel, total output rises to 15,200 watts. How many watts can a solar panel produce?

For example: A 100-watt panel can produce 100 watts per hour in direct sunlight. A 400-watt panel can generate 400 watts per hour under the same conditions. This doesn't mean they'll produce that amount all day, output varies with weather, shade, and panel orientation.

What is solar wattage?

Wattage refers to the amount of electrical power a solar panel can produce under standard test conditions (STC), which simulate a bright sunny day with optimal solar irradiance ($1,000 \text{ W/m}^2$), a cell temperature of 25°C , and clean panels. In simpler terms, a panel's wattage rating tells you its maximum power output under ideal conditions.

How many watts can a 400 watt solar panel produce?

A 100-watt panel can produce 100 watts per hour in direct sunlight. A 400-watt panel can generate 400 watts per hour under the same conditions. This doesn't mean they'll produce that amount all day, output varies with weather, shade, and panel orientation. Solar Power Meter Digital Solar Energy Meter Radiation Measuremen.

How to calculate solar panel wattage?

Also Check: – Hand Drying Footprint Calculator Calculating solar panel wattage involves a series of methodical steps: Determine the panel specifications: Locate the V_{mp} and I_{mp} values, which are typically provided on the panel's datasheet. Apply the formula: Multiply V_{mp} by I_{mp} to derive the maximum power output in watts.

How many kW is a 20 watt solar panel?



Usually, it is 1.2 to 1.5 which is multiplied by the desired output. For example with a 20% buffer, the required solar panel output with Buffer (Watts) = $6 \text{ kW} \times 1.20 = 7.2 \text{ kW}$ Nevertheless, when you are choosing solar panels make sure their power ratings equal or surpass the required output to meet your energy needs and preferences.

How much energy does a 100 watt solar panel produce?

The daily energy production of a 100-watt solar panel is influenced by the amount of sunlight it receives. On average, you can expect: Assuming 5 peak sun hours: $100\text{W} \times 5 \text{ hours} = 500 \text{ watt-hours (0.5 kWh)}$ per day. In optimal conditions: The panel may produce up to 600-700 watt-hours (0.6-0.7 kWh) daily.



How many watts are there in 38 solar panels



[How Many Solar Panels Do I Need for My UK Home? A Guide](#)

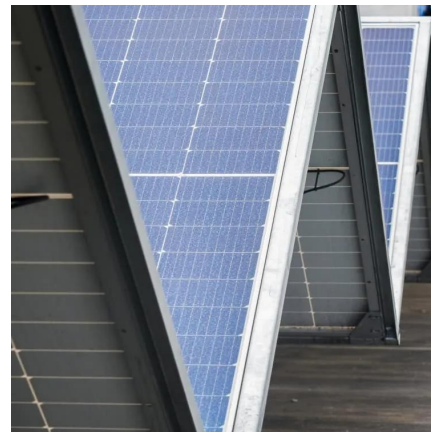
The number of panels you need depends on the size, location and electricity use of your home. If you're interested in running your home on solar power, you may be wondering "How many ...

[WhatsApp](#)

Solar Panel Output Voltage: How Many Volts Do PV Panel ...

For many calculations, we will need to know how many volts do solar panels produce. It's not all that easy to find the solar panel output voltage; there is a bit of confusion because we have 3 ...

[WhatsApp](#)



[Standard Solar Panel Sizes And Wattages \(100W-500W ...](#)

To bridge that gap of very useful knowledge needed, we have compared and averaged the sizes of 100-watt to 500-watt solar panels available on the market. The goal here is to get to the ...

[WhatsApp](#)



How Much Power Does a Solar Panel Produce? By Wattage, KW ...

This guide explains various solar panel options for size and energy production based on the average number of sunlight hours you receive



where the system will be installed ...

[WhatsApp](#)



How to Calculate the Output of a Solar Panel (with Examples and ...

Solar panels are a great way to generate clean energy and save on electricity bills. But how much energy does a solar panel actually produce? In this guide, we'll walk you ...

[WhatsApp](#)



Solar Panel Wattage Calculator

This calculator considers variables such as panel efficiency, sunlight intensity, and environmental conditions, allowing for a more accurate prediction of the electricity a solar panel can generate.

[WhatsApp](#)



[How Many Panels Are Needed To Run A Solar Pump?](#)

For the 1/2 horsepower, we're going to run that with around 8 solar panels or 800 watts. Then we get up to that large system (up to 100 horsepower), we're going to be using around 320 ...

[WhatsApp](#)





Contact Us

For catalog requests, pricing, or partnerships, please visit:
<https://www.straighta.co.za>