

# How many watts are 12v 200A solar panels





## Overview

---

Here are some charts on what size solar panel you need to charge 12v and 24v 200ah lead acid or lithium (LiFePO4) battery.

The maximum charging current for a 200Ah lithium battery is usually 100A and the ideal charging current for a lead-acid or AGM battery is.

Realistically, one should average approximately 600-800 watts of solar panels to effectively supply a 200A battery while also accommodating daily consumption needs. The intricacies of solar panel placement and potential environmental issues present additional challenges. How many watts solar panel to charge 200Ah battery?

Result: You need about 500 watt solar panel to charge a 12v 200ah lithium battery in 6 peak sun hours using an MPPT charge controller. What Size Solar Panel To Charge 200ah Battery?

Here are some charts on what size solar panel you need to charge 12v and 24v 200ah lead acid or lithium (LiFePO4) battery.

How many watts a solar panel to charge a 12V battery?

You need around 400-550 watts of solar panels to charge most of the 12V lithium (LiFePO4) batteries from 100% depth of discharge in 6 peak sun hours with an MPPT charge controller. What Size Solar Panel To Charge 24v Battery?

.

What size solar panel to charge a 24v battery?

You need about 650 watt solar panel to charge a 24v 200ah lead acid battery from 50% depth of discharge in 5 peak sun hours. Related: What Size Solar Panel To Charge 24v Battery?

You need about 1160 watts or 1.16kwh solar panels to charge a 24v 200ah lithium (LiFePO4) battery from 100% depth of discharge in 5 peak sun hours.

How many watts a solar panel to charge 130ah battery?



You need around 380 watts of solar panels to charge a 12V 130ah Lithium (LiFePO4) battery from 100% depth in 5 peak sun hours with an MPPT charge controller. What Size Solar Panel To Charge 140Ah Battery?

.

How many watts a solar panel to charge a lithium battery?

You need about 350 watt solar panel to charge a 12v 200ah lead acid battery from 50% depth of discharge in 5 peak sun hours. You need about 600 watt solar panel to charge a 12v 200ah lithium battery from 100% depth of discharge in 5 peak sun hours.

How many watts is a 200Ah battery?

12v 200ah battery means 2400 watt-hours of power. Calculate the watts in a battery using this formula (battery ah  $\times$  battery volts) how long does it take to charge a 200ah battery?



## How many watts are 12v 200A solar panels

---



### How Many Solar Panels Are Needed to Charge a 200Ah Battery?

Recap: To charge a 12V 200Ah battery, you'd need at least three 200W solar panels if you get 5 peak sunlight hours per day. For a 24V battery, which requires 4800 watt ...

[WhatsApp](#)

### How Many Solar Panels Does It Take to Charge a 200Ah Battery?

Solar energy is becoming increasingly popular as a renewable and sustainable source of power. One common application of solar energy is charging batteries, which can be ...

[WhatsApp](#)



### How Many Solar Panels To Charge A 200Ah Lithium Battery: ...

The average wattage of solar panels needed for effective charging is typically between 100 to 300 watts per panel. This range allows for sufficient energy production to meet ...

[WhatsApp](#)

### [How many solar panels are needed for 12V 200Ah?](#)

600 watts of solar panels are required to fully charge a 12V, 200Ah battery in a single day. However, if you have a 24V, 200 Ah battery, then





you will require 1,200 Watts of ...

[WhatsApp](#)



### [How Many 200ah Batteries are Needed to Power a Home?](#)

To calculate how many batteries you will need, use this simple formula: Total appliances watts/kilowatts = battery size Batteries are measured in amps, so to find its watt equivalent: ...

[WhatsApp](#)



### **What Size Solar Panel To Charge 200Ah Battery? (Incl. Calculator)**

Here are some charts on what size solar panel you need to charge 12v and 24v 200ah lead acid or lithium (LiFePO4) battery. You need about 350 watt solar panel to charge a ...

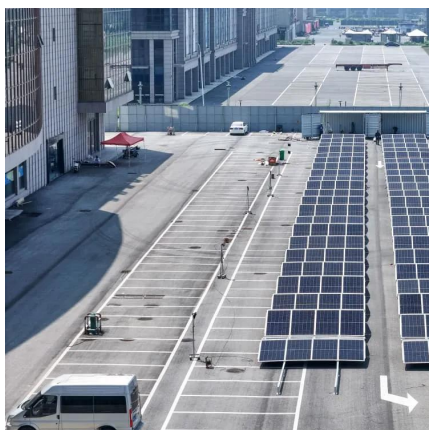
[WhatsApp](#)



### **Solar Panel Charge Time Calculator For 12V Batteries (100W-500W Panels)**

Let's look at how we can further simplify this process with the use of a solar panel charge time calculator: Solar Panel Charge Time Calculator (For 12V Batteries) You just insert the size of ...

[WhatsApp](#)





### [How Many Solar Panels Do I Need for a 200Ah Battery?](#)

To effectively charge a 200Ah battery, you typically need 2 to 4 solar panels, depending on their wattage and the average daily sunlight hours in your location. For instance, ...

[WhatsApp](#)



### **How Many Watt Solar Panel to Charge 12 Volt Battery: Calculate ...**

Unlock the power of solar energy with our comprehensive guide on how many watts are needed to charge a 12-volt battery. Learn about different solar panel types, key ...

[WhatsApp](#)

### [How Many Watts Can a 20A Charge Controller Handle?](#)

A 20A charge controller can handle 240 watts on a 12V solar system and 480 watts if the system is 24V. More advanced charge controllers support 12V and 24V solar panels and can adjust its ...

[WhatsApp](#)



### [200 Amp Solar System . All You Need to Know](#)

For starters, an individual solar cell can generate an open-circuit voltage of around 0.5V to 0.6V, and 0.46V when under load -- which is close to 3A. An individual with an open-circuit voltage ...

[WhatsApp](#)



### How many watts of solar panels are needed for a 200A battery?

Realistically, one should average approximately 600-800 watts of solar panels to effectively supply a 200A battery while also accommodating daily consumption needs.

[WhatsApp](#)



### How Many Solar Panels To Charge A 200Ah Lithium Battery: Size And Watts

The average wattage of solar panels needed for effective charging is typically between 100 to 300 watts per panel. This range allows for sufficient energy production to meet ...

[WhatsApp](#)

## Contact Us

For catalog requests, pricing, or partnerships, please visit:  
<https://www.straighta.co.za>