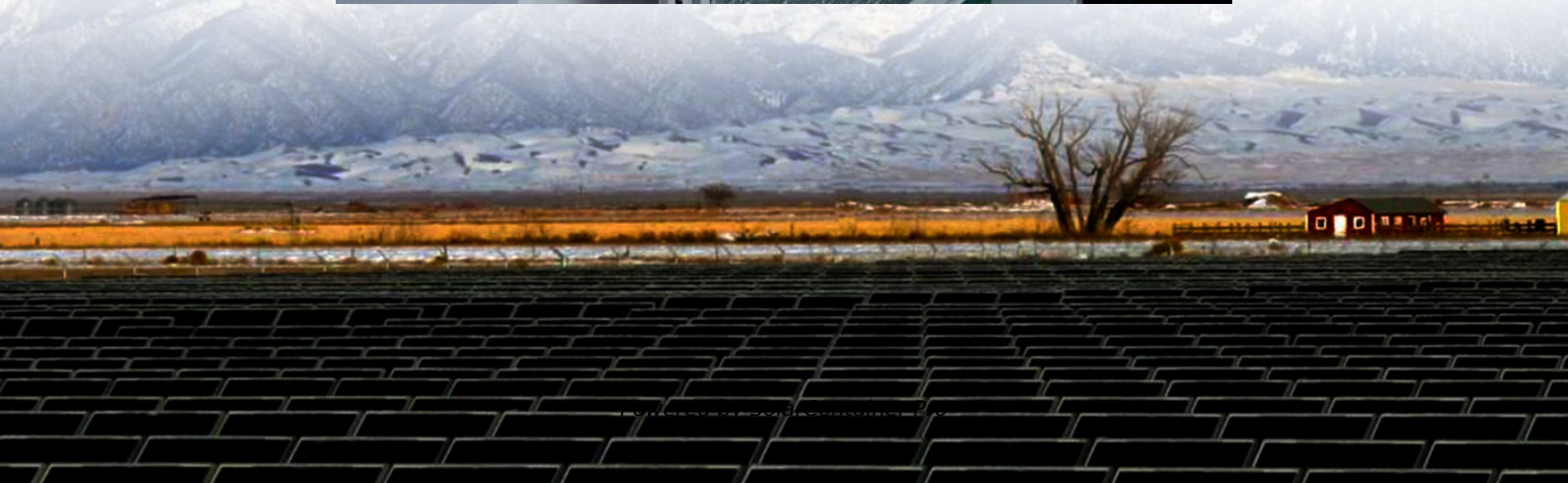


How many water pump inverters are needed for solar power generation





Overview

How many solar panels do I need to run a pump?

The number of solar panels needed to run a pump depends on the type of pump you have. There are two main classes of pumps: Pumps Designed for Solar: These pumps are slightly more efficient and can run on anywhere from 200 watts (two 100-watt panels) to around 800 or 1,200 watts of power.

How much power does a solar pump use?

But if you run the pump for 15 minutes twice an hour, power use goes up to 1000 watts. You do not have to worry too much about the calculations though. As long as the inverter can handle the surge watts, you should be able to run the pump without trouble. Of course the rest of your solar system must be of sufficient size too.

How many watts does an inverter need?

If you have a 1.5 HP pump, its running watts is going to be around 1500 watts, more or less. However, pump motors need a surge of power to start up. In a 1.5 AC pump this is about 3000 watts. Add 25% to 3000 watts and you get 3750 watts. Round that off to 4000, and that is the inverter you need.

How to choose a solar pump inverter?

Start by picking the right spot for your solar pump inverter carefully. It should be easy to get to, clear of blockages, and sheltered from bad weather. Make sure there's enough room for the inverter, solar panels, and the rest of the system. Good grounding and wiring keep your solar pump system safe and working right.

How much solar power does an AC pump need?

Here's some estimates on solar power for an AC pump – this varies depending on what kind of system you get but its a start! For a 1/2 horsepower pump, you'll need about eight solar panels or 800 watts of power.



Can a 500W inverter run a well pump?

As long as the inverter can handle the surge watts, you should be able to run the pump without trouble. Of course the rest of your solar system must be of sufficient size too. Does this mean you should get a 500W inverter?

No, because the well pump still needs 3000 watts approximately during startup.



How many water pump inverters are needed for solar power genera



[How Many Panels Do You Need To Run A Solar Pump?](#)

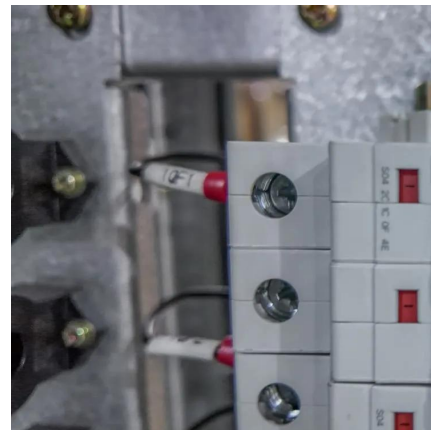
For a 1/2 horsepower pump, you'll need about eight solar panels or 800 watts of power. If you need a larger system of up to 100 horsepower, you'll require around 320 panels (each 375 ...

[WhatsApp](#)

Mastering Solar Pump Inverters: A 4-Point Guide for Reliable ...

In this guide, we'll cover everything you need to know about solar pump inverters, from their core functions to practical sizing tips for 1HP pumps. You'll also learn about the key ...

[WhatsApp](#)



[What Inverter Size for Well Pump to Use?](#)

These pumps consume 1500 watts but the surge wattage is double that, which is why a 4000 watt inverter is the best choice. Solar Inverter Well Pump Requirements An AC well pump requires ...

[WhatsApp](#)



How Many Panels Do You Need To Run A Solar Pump? , Demystifying Solar

For a 1/2 horsepower pump, you'll need about eight solar panels or 800 watts of power. If you need a larger system of up to 100 horsepower,



you'll require around 320 panels (each 375 ...

[WhatsApp](#)



[How Many Solar Panels Do You Need to Run a Water Pump?](#)

4 days ago · To run a water pump on solar, multiply the pump's power by 1.5 to calculate the total solar panel wattage needed. For example, a 1000W pump requires at least 1500W of solar ...

[WhatsApp](#)



Mastering Solar Pump Inverters: A 4-Point Guide for Reliable ...

What is a Solar Pump Inverter? A solar pump inverter is an electronic device that enables the use of solar energy to power water pumps. Its main function is to convert the ...

[WhatsApp](#)



[What Inverter Size for Well Pump to Use?](#)

To calculate what inverter your well pump needs: total surge watts + 25% = inverter size. The 25% reserve power is the minimum amount. You can increase that to 50%, or any percentage ...

[WhatsApp](#)





[How Does a Solar Pump Inverter Work? . inverter](#)

Hybrid inverters: Accept both solar input and grid/generator power, ideal for areas with unstable sunlight or as backup during cloudy periods. Conclusion The solar water pump ...

[WhatsApp](#)



How Many Solar Panels Can One Solar Pump Inverter Handle?

When solar water pumps underperform, the culprit is often a mismatched inverter-to-panel ratio--leading to water shortage, wasted investment, and frustrated users. The right sizing ...

[WhatsApp](#)

How Many Solar Panels Do You Need to Run a 1 HP Water Pump?

When you get a little bigger, like a 1.5 HP motor, you need more energy. If your panels make about 250-400 watts, you would need 3-5 panels to get the 1119 watts you need to run the ...

[WhatsApp](#)



How To Pair Solar Panels with Your Pump Inverter for Optimal ...

For example, if your end pump requires 1,000 watts, and the inverter is running at 95% efficiency, you will need about 1,053 watts of panel output. This calculation also takes average sunlight ...

[WhatsApp](#)



Contact Us

For catalog requests, pricing, or partnerships, please visit:
<https://www.straighta.co.za>