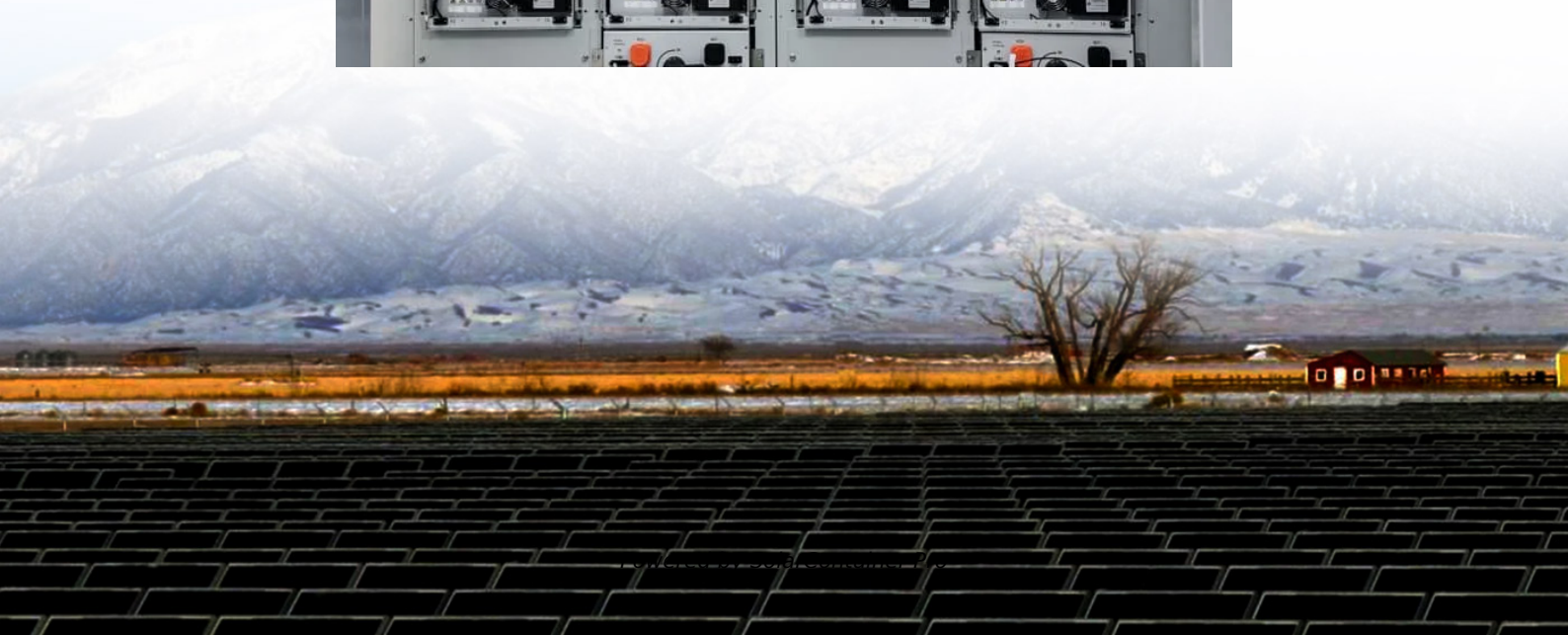


How many volts is the low voltage of a 12v inverter





Overview

What voltage is a 12V inverter?

Inverters come in various configurations, each designed for specific power systems. Common rated input voltages include 12V, 24V, and 48V. The choice depends on the application, the size of the power system, and the available power source. A 12V inverter is commonly used for smaller applications, such as in vehicles or small off-grid setups.

What is the cut off voltage on a 12V inverter?

For a 12V inverter, the cut-off inverter voltage is often set around 9.5VDC. Dropping below this threshold triggers a shut-off mechanism to preserve the battery's health and longevity. How do you check the voltage on an inverter?

.

What is a safe voltage for a 12V inverter?

For a 12V inverter, the maximum input inverter voltage is typically around 16VDC. This safety margin provides a buffer to accommodate fluctuations in the power source and protect the inverter from potential damage. What happens if voltage is too high for inverter?

.

Which 12V power inverter is best?

For reliability and performance, Topbull 12V power inverters are highly recommended. Known for their robust design and superior efficiency, Topbull's inverters provide stable power for a wide range of applications. Here are three excellent options.

What is a 12V car power inverter?

A 12V car power inverter is a must-have for road trips, mobile workstations,



and emergency preparedness. It allows drivers and passengers to charge and use electronic devices directly from the vehicle's battery or cigarette lighter port. Devices Powered: Laptops, smartphones, car refrigerators, small power tools, portable gaming consoles.

What voltage does an inverter use?

In different countries, the applicable AC voltage is different, and most countries use 110v, 120v output inverter voltage. You can confirm on the search engine or see how much AC voltage the home appliance label uses. How can the quality of inverter output voltage be measured?



How many volts is the low voltage of a 12v inverter



Understanding Inverter Voltage: Definition, Functions, Type, and ...

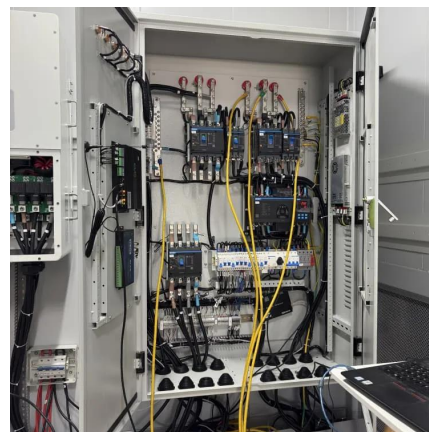
The low voltage inverter itself has input voltage power ranging from 12v, 24v, and 48v. While the output voltage range is ranging from 110V to 220V. Usually, this low-voltage ...

[WhatsApp](#)

[Inverters 101: Understanding amps and volts](#)

Note that on the 12-volt side of the inverter you need 1,200 watts going in, which works out to $100 \text{ amps} \times 12 \text{ volts} = 1,200 \text{ watts}$. But on the 120-volt side of the inverter you get ...

[WhatsApp](#)



Inverter Battery Voltage: How Many Volts Are Needed For ...

A 12-volt system is sufficient for smaller applications, while 48-volt systems are common in larger, grid-tied setups. Choosing the right voltage ensures that the system ...

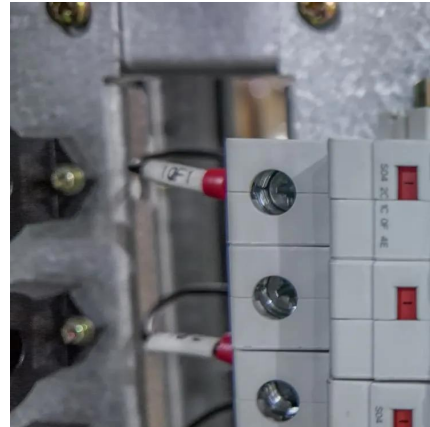
[WhatsApp](#)

Inverter low voltage at 12.6 Volts?

According to the inverter panel, the fridge draws 8.1 amp. However every subsequent time, approx every 30 minutes, the fridge will attempt to cycle but cannot. I can hear the motor begin ...



[WhatsApp](#)



[Frequently asked questions about inverters.](#) [Mastervolt](#)

Frequently Asked Questions about Inverters How much battery capacity do I need with an inverter? As a rule of thumb, the minimum required battery capacity for a 12-volt system is ...

[WhatsApp](#)



Set 12volt 3000watt Renogy inverter to shut down at a specified low voltage

Depends on the model. The pass through version is set to 10.0 volts. Upgrade your off-grid system with the Renogy 3000W Pure Sine Wave Power Inverter. Whether for your van ...

[WhatsApp](#)



12 Volt DC Power Inverter: In-Depth Learning and Buying Guide

A 12V DC power inverter is a device that converts low-voltage direct current (DC) power from a 12V battery (such as a car battery or deep-cycle battery) into 120V alternating ...

[WhatsApp](#)





12V To 120V Converter Guide & Types , What You Need To Know

How Does a 12V to 120V Converter Work?
Voltage Conversion Process Imagine you're trying to fit an American plug into a European socket - it just doesn't work! Similarly, ...

[WhatsApp](#)



[12V 5000 Watt Pure Sine Wave Inverter](#)

High quality digital display 5000 watt pure sine wave inverter DC 12 volt. Low voltage, over voltage, over load, over temperature, short circuit and input reverse polarity protect function of ...

[WhatsApp](#)

Frequently Asked Questions About Power Inverters , DonRowe

The inverter draws its power from a 12 Volt battery (preferably deep-cycle), or several batteries wired in parallel. The battery will need to be recharged as the power is drawn out of it by the ...

[WhatsApp](#)



Set 12volt 3000watt Renogy inverter to shut down at a specified ...

Depends on the model. The pass through version is set to 10.0 volts. Upgrade your off-grid system with the Renogy 3000W Pure Sine Wave Power Inverter. Whether for your van ...

[WhatsApp](#)



48V Inverter: The Ultimate Guide to Efficient and Scalable Power

For example, home refrigerators, well pumps, LED lighting, and computers will run more smoothly on a 48V inverter than a low-voltage option such as a 12V or even 24V DC ...

[WhatsApp](#)



Contact Us

For catalog requests, pricing, or partnerships, please visit:
<https://www.straighta.co.za>