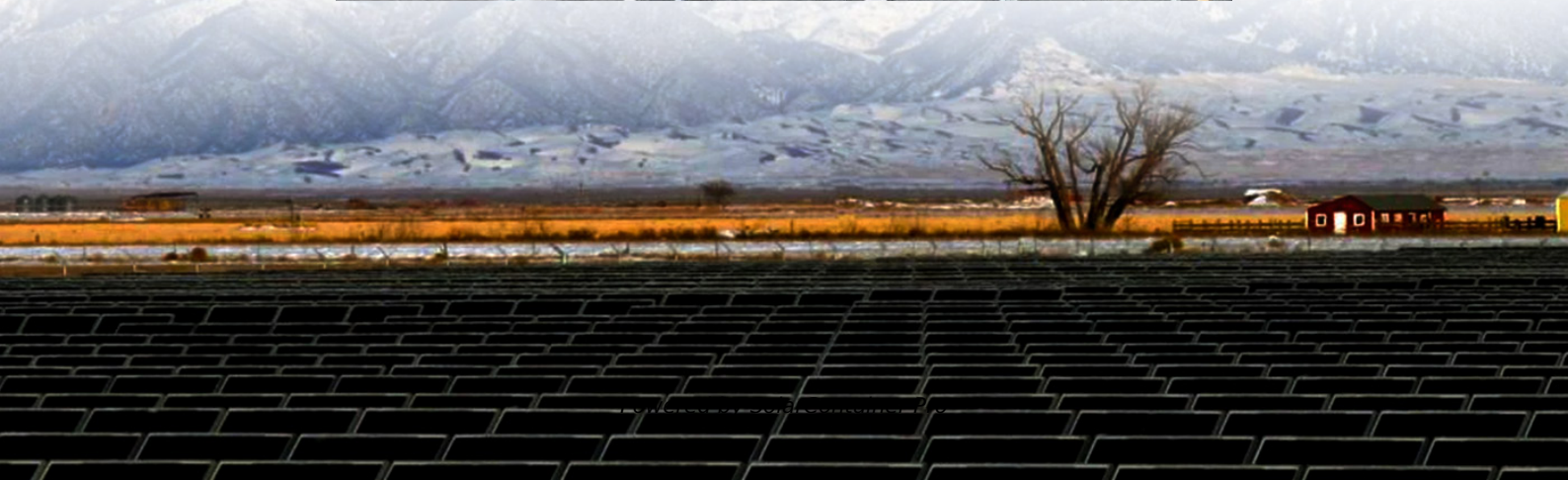
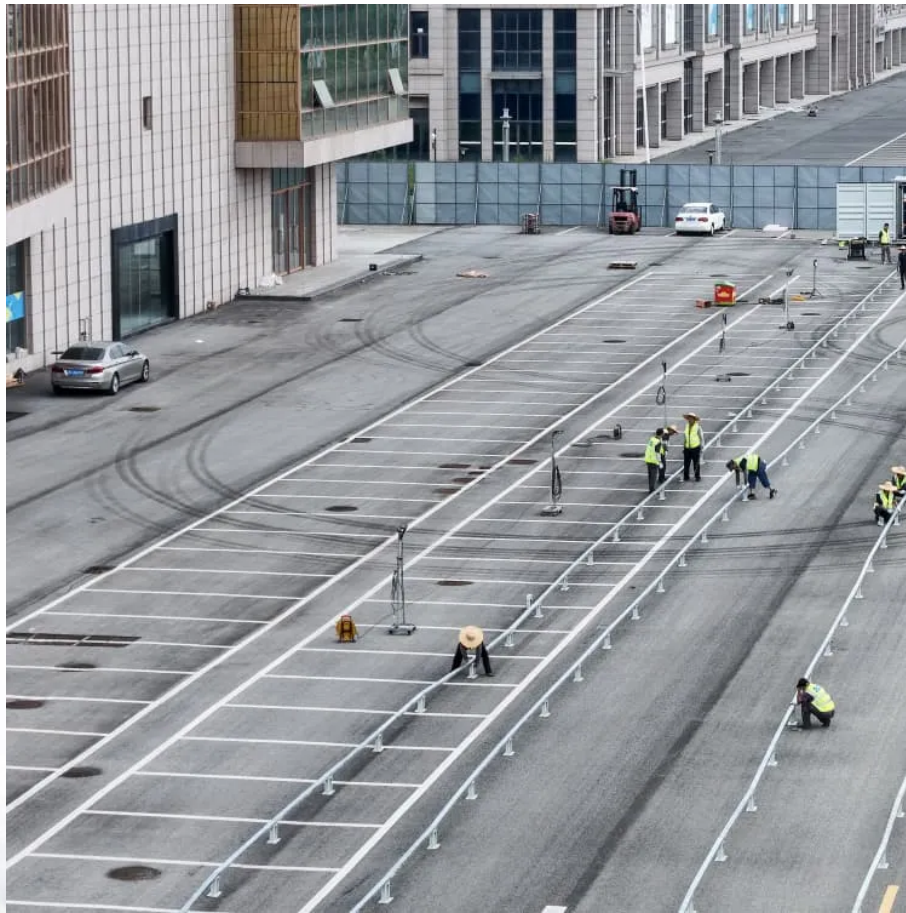


How many volts does the mobile base station battery have





Overview

Mobile radios are typically designed to operate on a 13.8 volt electrical system, which is what you have when the car's alternator is charging the battery. The range is usually plus or minus 15 percent of that 13.8 volts, so the low side is around 11.73 volts. How much power does a cellular base station use?

This problem exists particularly among the mobile telephony towers in rural areas, that lack quality grid power supply. A cellular base station can use anywhere from 1 to 5 kW power per hour depending upon the number of transceivers attached to the base station, the age of cell towers, and energy needed for air conditioning.

Can a mobile CB be used as a base station?

Yes, a mobile CB can be used as a base station. You will need a DC power supply and a base station antenna. The power supply should have an output between 12 to 14 volts DC. The power supply must be rated at 3 amps or more. You will also need a CB base station antenna.

Can a mobile radio be used as a base station?

Of course, there is a little matter of power. A mobile radio is specifically designed to operate on DC power from a vehicle. It has no internal power transformer or inverter of its own, so it isn't made to plug into the AC wall outlet of a home or office building. In that case, how do you power a mobile radio for use as a base station?

That's easy.

Do mobile radios need a power supply?

Mobile radios have different power requirements, and power supplies have different power ratings. Choose the correct power supply for your radio, and you may have years of clean power with no noisy interference and uninterrupted service. Choose the wrong one, and your radio may not be able



to transmit or even stay on from the start.

How much power does a mobile radio need?

For starters, let's discuss how much power you will need for safe and stable operation. For this, you will need the operating specs of your radio. Since mobile radios are designed for use in a vehicle, they will typically need Direct Current (DC) between 12VDC and 13.8VDC operate.

How do I convert my mobile radio into a base station?

Simply put, to convert your mobile two way radio into a base station, we recommend that you buy a higher amp power supply than is absolutely needed. When it comes to power, you can't over buy. If in doubt, go bigger. At the end of the day, you'll be glad you did.



How many volts does the mobile base station battery have



[What Is the Voltage of a Standard Car Battery?](#)

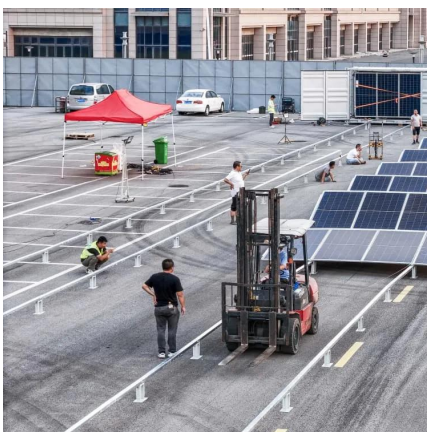
How many volts does a new car battery have? A new car battery typically has an initial resting voltage of around 12.7 volts, but it may settle at approximately 12.4 to 12.6 volts ...

[WhatsApp](#)

Mobile as base station--How do I power this thing? : r/gmrs

For peak performance, best practice is to use a 13.8V regulated power supply. They're more money but most so called '12v' automotive accessories are actually designed to be used when ...

[WhatsApp](#)



[Choosing the right size power supply for your radio](#)

How do you power a mobile radio for use as a base station? Get a power supply. But this isn't a cut and dry, one-size-fits-all sort of thing. Here's how to choose the right power ...

[WhatsApp](#)

How to convert a mobile radio to a home base station? : r/gmrs

The mobile radios (and even most ham radio desktop models) use that same 12V DC voltage that you are going to need. The difference is how



many amps the power supply needs to deliver.

[WhatsApp](#)



12 Volt Lead-Acid Battery + Trickle Charger to Power Base-Station

Using a 12v battery will power the radio, but if you plan on transmitting, the voltage can drop. It probably won't cause issues with the 10watt radio you mentioned but with higher ...

[WhatsApp](#)



How many volts of battery are used in mobile base stations

In this paper, we closely examine the base station features and backup battery features from a 1.5-year dataset of a major cellular service provider, including 4,206 base stations distributed ...

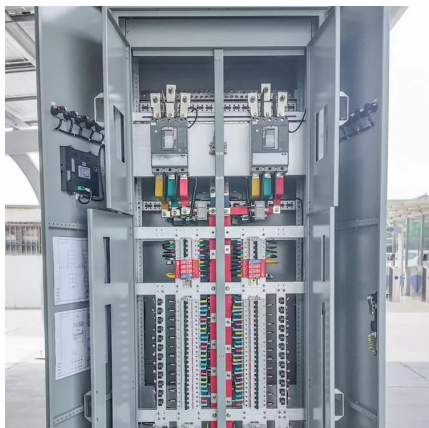
[WhatsApp](#)



[Understanding Mobile CB Radio Usage in Homes : Cobra ...](#)

Yes, a mobile CB can be used as a base station. You will need a DC power supply and a base station antenna. The power supply should have an output between 12 to 14 volts ...

[WhatsApp](#)





How to convert a mobile radio to a home base station? : r/gmrs

The mobile radios (and even most ham radio desktop models) use that same 12V DC voltage that you are going to need. The difference is how many amps the power supply ...

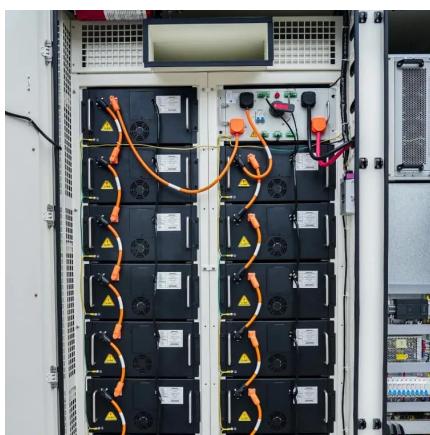
[WhatsApp](#)



Mobile as base station--How do I power this thing? : r/gmrs

For peak performance, best practice is to use a 13.8V regulated power supply. They're more money but most so called '12v' automotive accessories are actually designed to ...

[WhatsApp](#)



How Many Volts Should a Riding Lawn Mower Battery Have for ...

Struggling with your riding lawn mower's battery? Discover how many volts you need for optimal performance! This article educates homeowners on the essential 12-volt ...

[WhatsApp](#)



Understanding EV Charging Stations: Watts, Amps, and Volts

To determine how much power will flow to your car's battery multiply the volts by the amps and divide by 1,000. For example, a 240 volt level two charging station with a 30 amp rating will ...

[WhatsApp](#)



[Choosing a 12V Battery for Your Mobile Base Station](#)

While any 12V car battery might technically power your mobile base station, selecting the right battery for optimal performance and longevity requires understanding a few key factors.

[WhatsApp](#)



Contact Us

For catalog requests, pricing, or partnerships, please visit:
<https://www.straighta.co.za>