

How many volts does an inverter need for home use





Overview

What size inverter do I Need?

For example, if your total load is 1200 watts, then you should consider an inverter size of 2400 watts. Let's consider an example to illustrate the process of finding the right inverter size needed to run a house. Suppose you have the following appliances with indicated power, Note: You can find this information on the label of the appliance.

How much power does an inverter need?

The continuous power requirement is actually 2250 but when sizing an inverter, you have to plan for the start up so the inverter can handle it. Third, you need to decide how long you want to run 2250 watts. Let's say you would like to power these items for an eight-hour period.

What are the different solar inverter sizes?

Solar generators range in size from small generators for short camping trips to large off-grid power systems for a boat or house. Consequently, inverter sizes vary greatly. During our research, we discovered that most inverters range in size from 300 watts up to over 3000 watts. In this article, we guide you through the different inverter sizes.

How to choose the right inverter for your home?

Now, consider the inverter efficiency to calculate the voltage and current rating of the inverter your home needs. In India, the ideal inverter efficiency ranges from 60% to 80%, and the total power requirement is divided by the power factor of the appliances. This will give you the ideal inverter size right for your home.

How much power does a fridge inverter need?

This is because the starting power required by a fridge, which can reach up to 3000W, exceeds the maximum surge power that the inverter can handle.



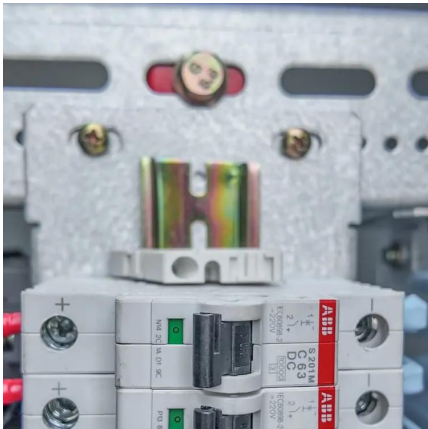
Consequently, it is advisable to use an inverter with a higher power rating or consider other alternatives for running a refrigerator.

How to size a 1500 watt power inverter?

A rule-of-thumb for sizing your 1500-watt power inverter is to combine the wattage of all the devices you are planning to use at the same time (don't forget basic necessities, like lights) and give yourself 20% headroom.



How many volts does an inverter need for home use



[What Size Inverter do I Need? \[with Examples\]](#)

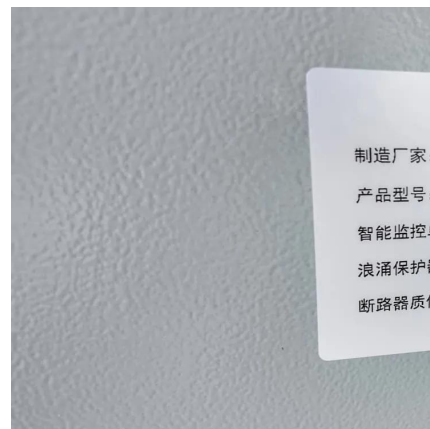
Sizing an inverter is very simple, as long as you know how much power do you exactly need. If you think that at some point you will be plugging in more devices, consider that as well and ...

[WhatsApp](#)

What Size Inverter Do You Need for Your Home? , Renogy US

To calculate or determine what size inverter can meet your energy requirements, you need to calculate the total power of all the appliances you want to run with the inverter. Here is how ...

[WhatsApp](#)



What Size Inverter Do You Need for Your Home? - PowerGen USA

In this guide, we'll walk you through the steps to accurately calculate your home's total power demand and select an inverter that best matches your energy usage patterns and ...

[WhatsApp](#)

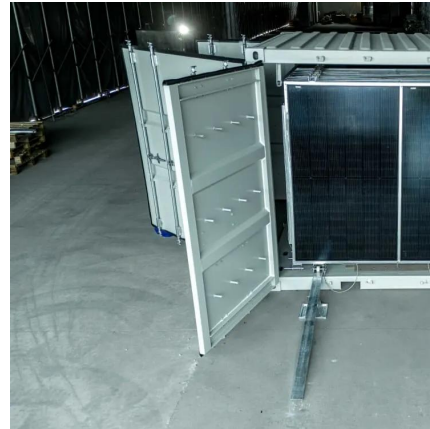
Inverter Current Calculator

How to Use the Inverter Current Calculator To use the inverter current calculator, follow these steps: Input the power rating (in watts or kilowatts) of your inverter. Enter the input



voltage of ...

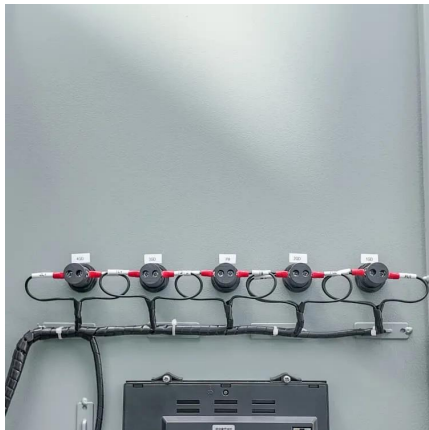
[WhatsApp](#)



Understanding Battery Capacity and Inverter Compatibility

How Long Can a 100 Ah Battery Run a 1000W Inverter? To estimate how long a battery can run an inverter, we need to consider the power draw and the battery's capacity. ...

[WhatsApp](#)



How much power does an Inverter use just sitting there idling?

Hello, Quick question. I have a 24V 3000W pure sine wave inverter powering two 15A circuits. The inverter itself uses about 30W running a 500W load. There are some times ...

[WhatsApp](#)



[What Size Inverter Will Run a Home? , Fenice Energy](#)

This comprehensive guide will help you select the right inverter capacity for your home. Before diving into the intrinsic details of the inverter, it's important to understand the ...

[WhatsApp](#)

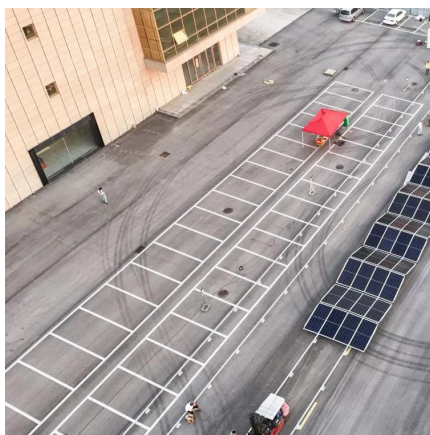




[What Size Inverter Do I Need for My Power Needs](#)

To use a power inverter, it needs to be connected to a 12 Volt battery, preferably a deep-cycle battery. In instances where more power is needed, multiple batteries can be wired ...

[WhatsApp](#)



Inverter Battery Voltage: How Many Volts Are Needed For ...

Understanding inverter battery voltage levels is crucial when selecting the right battery for an inverter system. The 12V voltage level is the most common voltage used in ...

[WhatsApp](#)

[What Inverter Size Do I Need to Run a Laptop?](#)

A 100W inverter can run a standard laptop, but more power is needed if you add a printer, router and speakers. High end gaming laptops will require at least a 400 watt inverter. How to ...

[WhatsApp](#)



[How Many Amps Does a 2000 Watt Inverter Draw? \(Answered\)](#)

Knowing the amps needed for an electronic device is important, especially for an inverter. You'll use the inverter properly and safely if you know its ampacity. Now, you're ...

[WhatsApp](#)



[What Inverter Size Do I Need to Run a Toaster?](#)

What Type of Toaster is Best For Inverters? There are many types of toasters but for home use there are two options: the pop up toaster and toaster oven. Pop up toasters consume need ...

[WhatsApp](#)



Contact Us

For catalog requests, pricing, or partnerships, please visit:
<https://www.straighta.co.za>