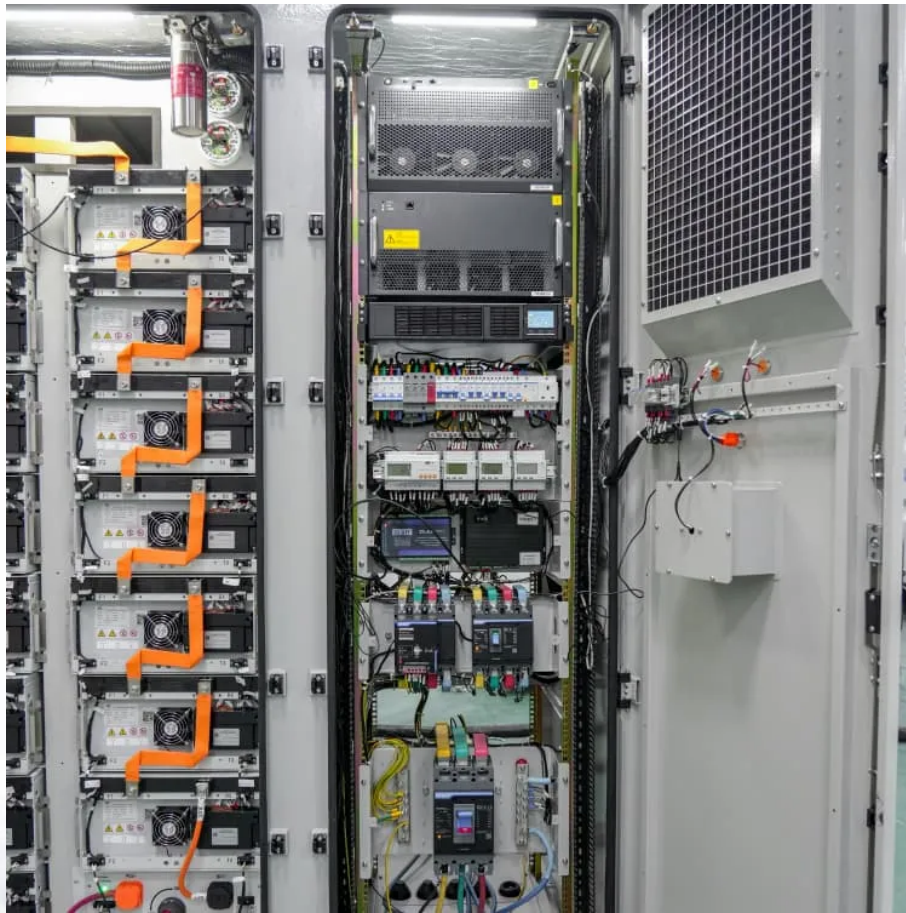


How many volts does a communication base station have





Overview

In communications, a base station is a communications station installed at a fixed location and used to communicate as part of one of the following:

- a system, or;
- a system such as or .

What is a base station in telecommunications?

In telecommunications, a base station is a fixed transceiver that is the main communication point for one or more wireless mobile client devices. A base station serves as a central connection point for a wireless device to communicate.

What is a base station in a wireless network?

In the area of wireless computer networking, a base station is a radio receiver/transmitter that serves as the hub of the local wireless network, and may also be the gateway between a wired network and the wireless network. It typically consists of a low-power transmitter and wireless router.

Do base stations need a power supply?

Power supply: The base station requires a power supply to operate. It may be connected to the electrical grid or have a backup power source like batteries or generators in case of power outages. 7. Backhaul connection: The base station needs a backhaul connection to connect to the core network.

How does a base station work?

It usually connects the device to other networks or devices through a dedicated high bandwidth wire of fiber optic connection. Base stations typically have a transceiver, capable of sending and receiving wireless signals; Otherwise if they only send the trailer it will be considered a transmitter or broadcast point only.

Is a base station a transmitter or broadcast point?

Base stations are generally a transceiver, capable of sending and receiving wireless signals; otherwise, if they only transmitted signals out, they would be



considered a transmitter or broadcast point. A base station will have one or more radio frequency (RF) antennas to transmit and receive RF signals to other devices.

How does a base station communicate with a client device?

Generally, if client devices wanted to communicate to each other, they would communicate both directly with the base station and do so by routing all traffic through it for transmission to another device. Base stations in cellular telephone networks are more commonly referred to as cell towers.



How many volts does a communication base station have



Telecommunication base station system working principle and ...

In communication power supplies, also known as switch rectifiers, they generally provide DC power with a voltage of -48V. After distribution, a voltage of -48VDC can be obtained.

[WhatsApp](#)

[How many channels can a typical base station handle?](#)

What is base station in communication? Base station (in communications) Definition: [A mobile phone base station is] a transmission and reception station in a fixed location, consisting of ...

[WhatsApp](#)



[Base Station's Role in Wireless Communication Networks](#)

What is a base station? A base station is a critical component of wireless communication networks. It serves as the central point of a network that connects various devices, such as ...

[WhatsApp](#)

[How Much Power does USB Port Output? \(USB 1.0, 2.0, 3.0\)](#)

The voltage-current specifications of USB 1.0 are 5V@500mA, which gives a total power output of 2.5 watts. Common peripheral devices like a



mouse, keyboard, etc work with ...

[WhatsApp](#)



The Base Station in Wireless Communications: The Key to ...

A typical base station has three sectors, which allows for signal coverage of the area around the station. Several dozen or several hundred base stations are connected to the ...

[WhatsApp](#)



#7 Things to Know About Base Station Antennas of Mobile ...

Base station antennas can be vertical or directional. Vertical base station antennas are mounted on poles, and directional base stations use multiple antennas to provide 360 ...

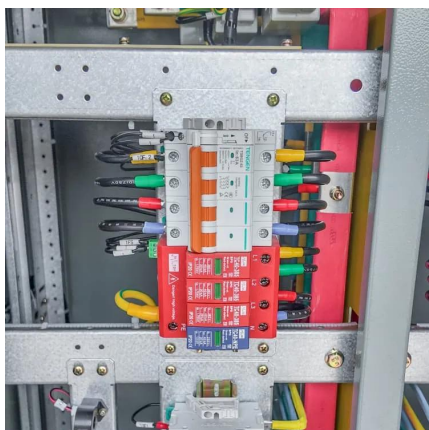
[WhatsApp](#)



#7 Things to Know About Base Station Antennas of Mobile Communication

Base station antennas can be vertical or directional. Vertical base station antennas are mounted on poles, and directional base stations use multiple antennas to provide 360 ...

[WhatsApp](#)





Base station

OverviewWireless communicationsLand surveyingComputer networkingSee also

In radio communications, a base station is a wireless communications station installed at a fixed location and used to communicate as part of one of the following: o a push-to-talk two-way radio system, or;o a wireless telephone system such as cellular CDMA or GSM cell site.

[WhatsApp](#)



Contact Us

For catalog requests, pricing, or partnerships, please visit:
<https://www.straighta.co.za>