

# How many volts are in a lithium battery pack





## Overview

---

The standard voltage of a lithium-ion battery typically ranges from 3.0 to 4.2 volts per cell. This voltage range is crucial for the battery's performance and longevity. What voltage is a lithium ion battery?

A lithium-ion battery's nominal or standard voltage is nearly 3.60V per cell. Some battery manufacturers mark lithium-ion batteries as 3.70V per cell or higher. What voltage is overcharged on a lithium battery?

Overcharging means charging the lithium-ion battery beyond its fully charged voltage.

Why do lithium batteries have different voltages?

Different lithium battery materials typically have different battery voltages caused by the differences in electron transfer and chemical reaction processes. Most popular voltage sizes of lithium batteries include 12V, 24V, and 48V.

What is the difference between a lithium ion battery and a battery pack?

While a lithium-ion cell is a single battery unit, a battery pack combines multiple cells in series or parallel. The typical lifespan of lithium-ion batteries is around 300-1000 charge cycles. Voltage vs. Charging Relations The relation between voltage and the battery's charge is often overlooked, but it's important.

What should you know about lithium ion batteries?

The most important key parameter you should know in lithium-ion batteries is the nominal voltage. The standard operating voltage of the lithium-ion battery system is called the nominal voltage. For lithium-ion batteries, the nominal voltage is approximately 3.7-volt per cell which is the average voltage during the discharge cycle.

What is a safe voltage for a lithium ion battery?



Lithium-ion batteries function within a certain range at which their voltage operates optimally and safely. The highest range where the fully charged voltage of a lithium-ion battery is approximately 4.2V per cell. The lowest range which is the minimum safe voltage for lithium-ion batteries is approximately 3.0V per cell.

How much voltage does a Li-ion battery have?

A Li-ion cell when fully charged at 100%SoC can have nearly 4.2V. As it starts to discharge itself, the voltage decreases, and the voltage remains to be 3.7V when the battery is at half charge, ie, 50%SoC. One can calculate the battery is to be discharged based on the voltage when the SoC is 0%. The voltage of a cell, in this case, is 3.0V.



## How many volts are in a lithium battery pack

---



### Lithium Battery Voltage Chart

Choosing the right voltage is crucial, as an incorrect voltage can damage the device or result in suboptimal performance. The voltage of lithium batteries typically ranges from 3.2 to 3.7 volts ...

[WhatsApp](#)

### Lithium Ion Battery Voltage Explained: Everything You Need to ...

The fully charged voltage of a 12V LiFePO4 battery is approximately 14.6 volts, whereas a fully discharged voltage is around 10 volts. Similarly, A 48V LiFePO4 battery's ...

[WhatsApp](#)



### Introduction: What Is a Lithium-Ion Battery Pack?

Whether you need a 7.4V, 11.1V, or 14.8V battery pack, understanding their structure, chemistry, and configuration is crucial. In this guide from A& S Power, we'll explain the different types of Li ...

[WhatsApp](#)

### Lithium-Ion Battery Voltage Chart

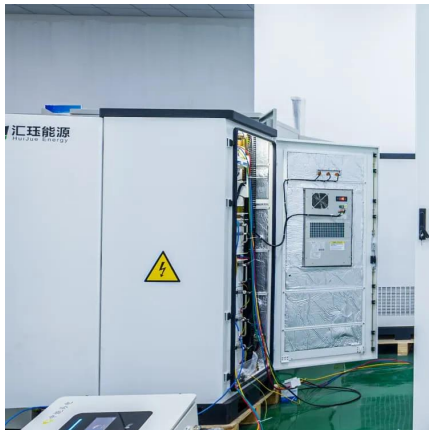
Understanding lithium-ion battery voltage is essential for safe usage, maximizing performance, and prolonging battery life. A fully charged cell reads around 4.2V, while a dead one





drops to ...

[WhatsApp](#)



### **Lithium LiFePO4 Battery Voltage Charts For 12V, 24V, 48V, 3.2V**

48V Lithium Battery Voltage Chart (3rd Chart). Here we see that the 48V LiFePO4 battery state of charge ranges between 57.6V (100% charging charge) and 140.9V (0% charge). 3.2V Lithium ...

[WhatsApp](#)

### [Battery Pack Calculator , Good Calculators](#)

Use it to know the voltage, capacity, energy, and maximum discharge current of your battery packs, whether series- or parallel-connected. Using the battery pack calculator: Just complete ...

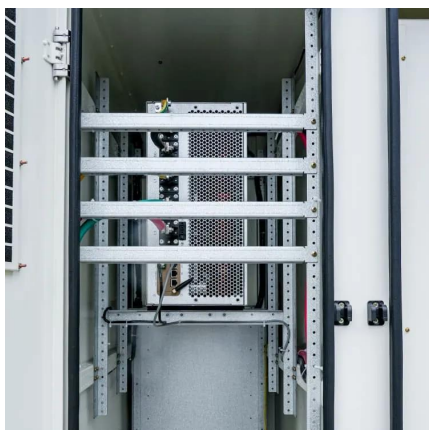
[WhatsApp](#)



### [Ultimate Guide to Lithium-Ion Battery Voltage Chart](#)

Different voltage sizes of lithium-ion batteries are available, such as 12V, 24V, and 48V. The lithium-ion battery voltage chart lets you determine the discharge chart for each ...

[WhatsApp](#)

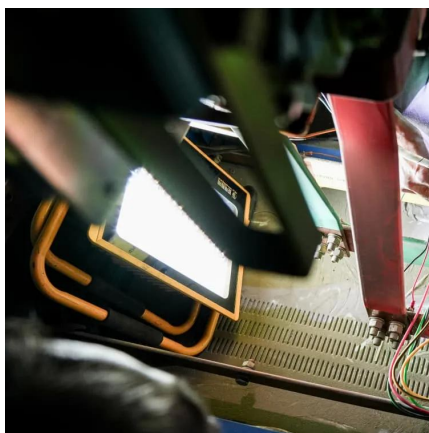




## All About Lithium Ion Battery Voltage -- A Simple Explanations

Li-ion (lithium-ion) batteries are widely used in electronics. The nominal lithium ion battery voltage of a single Li-ion cell is about 3.6-3.7 volts. But when these cells are linked in ...

[WhatsApp](#)



## [Complete Guide to Lithium-Ion Battery Voltage Chart](#)

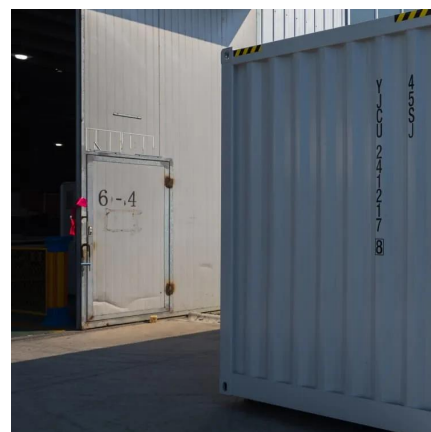
Voltage is a major basis for estimating this percentage. Nominal voltage: This is the most common voltage on the battery label, such as 3.7V. It represents the average voltage ...

[WhatsApp](#)

## Lithium Battery Voltage Chart: 3.2V, 3.7V, 4.2V Explained

What is a Battery Voltage Chart? A battery voltage chart is a critical tool for understanding how different lithium-ion batteries perform under specific conditions. It displays ...

[WhatsApp](#)



## Lithium-Ion Battery Voltage: How Many Volts And Types ...

What Is the Standard Voltage of a Lithium-Ion Battery? The standard voltage of a lithium-ion battery typically ranges from 3.0 to 4.2 volts per cell. This voltage range is crucial ...

[WhatsApp](#)



### **Lithium Battery Voltage Chart: 3.2V, 3.7V, 4.2V Explained**

We will take you through the lithium-ion battery voltage chart. Part 1. Lithium-ion battery voltage chart and definitions. The lithium-ion battery voltage chart is a comprehensive ...

[WhatsApp](#)



### **52V battery packs and 3077 FETs are good, and here's why**

The adjustments on the charger will determine the precise voltage that your lithium battery ends up at, and the Low Voltage Cutoff (LVC) inside the controller will determine the pack voltage ...

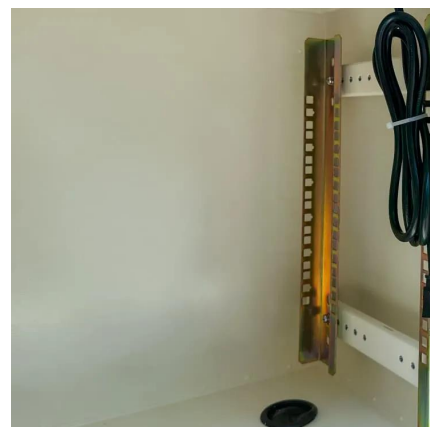
[WhatsApp](#)



### **How Many Cells Does A Battery Have? Uncover Battery Design ...**

A standard 12V lithium battery pack typically consists of multiple lithium-ion cells arranged in series and parallel configurations. Each lithium-ion cell has a nominal voltage of ...

[WhatsApp](#)





### **How Many Lithium Cells for 48V? Lithium Cells for 48V System**

Choosing the correct number of lithium cells for a 48V battery system is essential for ensuring optimal performance, safety, and longevity. Typically, a 48V lithium battery pack ...

[WhatsApp](#)

## **Contact Us**

---

For catalog requests, pricing, or partnerships, please visit:  
<https://www.straighta.co.za>