

How many types of batteries are there in telecom base stations





Overview

There are two types of telecom batteries: permanent installations and temporary batteries. Permanent installations are there for the long haul and need to be durable enough to handle local weather patterns. They also need to be able to hold a consistent charge for long periods without losing power. What is a telecom battery?

Telecom batteries play a crucial role in powering equipment, supporting backup systems, and facilitating smooth operations. This comprehensive guide will delve into the types of telecom batteries, their applications, maintenance tips, and the latest advancements in battery technology. 1. Understanding Telecom Batteries 2.

What type of battery does a telecom system need?

Beyond the commonly discussed battery types, telecom systems occasionally leverage other varieties to meet specific needs. One such option is the flow battery. These batteries excel in energy storage, making them ideal for larger installations that require consistent power over extended periods.

What are the different types of Telecom batteries?

There are two types of telecom batteries: permanent installations and temporary batteries. Permanent installations are there for the long haul and need to be durable enough to handle local weather patterns. They also need to be able to hold a consistent charge for long periods without losing power.

Are Telecom batteries more powerful than typical batteries?

Telecom batteries are significantly more powerful and durable than your typical battery. What Types of Batteries Are Used for Telecommunication?

There are two main types of batteries that are used in telecom: lead-acid batteries and lithium-ion batteries.

Should you use a telecom battery?



Telecom batteries should be built to withstand incredibly harsh conditions, including natural disasters. That's because, as the main power backup for your telecom system, they need to be up even when everything else is down. Durability is one reason both AGM and lithium-ion batteries are recommended for telecom use.

How do I choose the right battery for my telecom system?

Choosing the right battery for your telecom system involves several critical factors. Start by assessing the energy requirements of your equipment. Different devices will have different power needs, which can influence battery capacity. Next, consider the operating environment. Is it indoors or outdoors?



How many types of batteries are there in telecom base stations



[What Kind of Battery Is Used in Telecom Towers?](#)

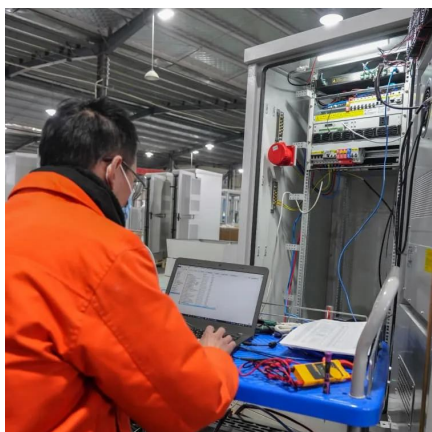
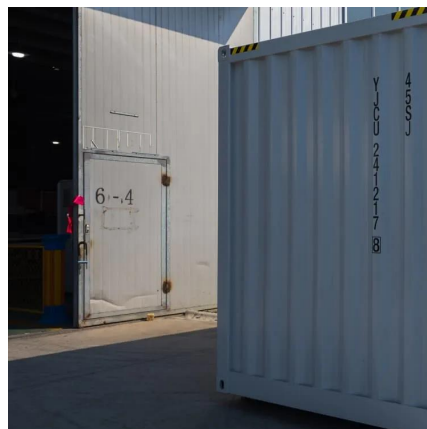
The most commonly used batteries in telecom towers are VRLA (Valve-Regulated Lead-Acid) batteries and lithium-ion batteries, known for their durability, high energy density, and ...

[WhatsApp](#)

Optimization of battery management in telecommunications ...

Since 2016, the French telecommunications operator Orange France uses its base stations batteries installed for backup to adjust the power consumption and perform load ...

[WhatsApp](#)



[Types of Batteries Used in Telecom Systems: A Guide](#)

Different types provide varying levels of efficiency and longevity, making the choice critical for telecom operators. With technology evolving rapidly, understanding the options ...

[WhatsApp](#)

What to Look for in a Telecom Battery? Updated August 2025

There are two types of telecom batteries: permanent installations and temporary batteries. Permanent installations are there for the long



haul and need to be durable enough to handle ...

[WhatsApp](#)



Types of Batteries Used in Telecom Towers and Their Benefits

Choosing the right battery for telecom towers can significantly impact their efficiency, longevity, and cost-effectiveness. In this guide, we'll explore the different types of ...

[WhatsApp](#)

What Is a Telecom Battery? Types, Applications, and Key Benefits

Discover what a telecom battery is, the types (VRLA, lithium), key applications in base stations & data centers, and benefits like reliability & backup time.

[WhatsApp](#)



Types of Batteries Used in Telecom: A Practical Guide for ...

In telecom sites, batteries serve two primary roles: Backup Power: Instantly support network equipment during utility outages or generator startup delays. Primary Power (in off ...

[WhatsApp](#)





TELECOM SITES PHYSICAL SECURITY

For the purposes of this document, physical security relates to the situation of people directly harming a telecom site intending either theft or vandalism. Physical security is paramount for ...

[WhatsApp](#)



Contact Us

For catalog requests, pricing, or partnerships, please visit:
<https://www.straighta.co.za>