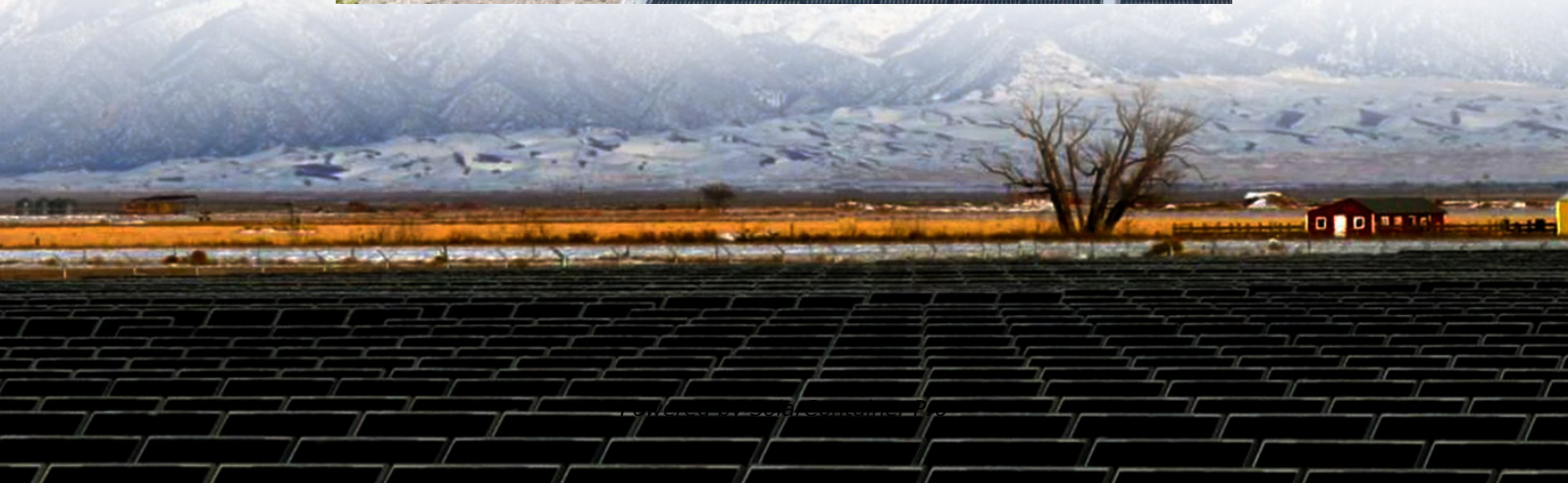


How many times more power does a 5G base station consume than a 4G base station





Overview

Are 5G base stations causing more energy consumption?

However, Li says 5G base stations are carrying five times the traffic as when equipped with only 4G, pushing up power consumption. The carrier is seeking subsidies from the Chinese government to help with the increased energy usage.

How much power does a 5G station use?

The power consumption of a single 5G station is 2.5 to 3.5 times higher than that of a single 4G station. The main factor behind this increase in 5G power consumption is the high power usage of the active antenna unit (AAU). Under a full workload, a single station uses nearly 3700W.

Why does 5G use more power than 4G?

The data here all comes from operators on the front lines, and we can draw the following valuable conclusions: The power consumption of a single 5G station is 2.5 to 3.5 times higher than that of a single 4G station. The main factor behind this increase in 5G power consumption is the high power usage of the active antenna unit (AAU).

Does China Mobile have a 5G base station?

China Mobile has tried using lower cost deployments of MIMO antennas, specifically 32T32R and sometimes 8T8R rather than 64T64R, according to MTN. However, Li says 5G base stations are carrying five times the traffic as when equipped with only 4G, pushing up power consumption.

How much power will a 5G base station use in 2025?

The Small Cell Forum predicts the installed base of small cells to reach 70.2 million in 2025 and the total installed base of 5G or multimode small cells in 2025 to be 13.1 million. "A 5G base station is generally expected to consume roughly three times as much power as a 4G base station.



How will 5G affect the energy consumption of mobile operators?

Edge compute facilities needed to support local processing and new internet of things (IoT) services will also add to overall network power usage. Exact estimates differ by source, but MTN says the industry consensus is that 5G will double to triple energy consumption for mobile operators, once networks scale.



How many times more power does a 5G base station consume than



[Learn What a 5G Base Station Is and Why It's Important](#)

In essence, a 5G base station is a very sophisticated cell tower that connects your device-terms like phones and IoT devices-to the much larger 5G network. Unlike their 4G counterparts, 5G ...

[WhatsApp](#)

5G network deployment and the associated energy consumption ...

However, the total power consumption of a single 5G base station is about four times that of a single 4G base station and considering the high density the overall power ...

[WhatsApp](#)



[Front Line Data Study about 5G Power Consumption](#)

The power consumption of a single 5G station is 2.5 to 3.5 times higher than that of a single 4G station. The main factor behind this increase in 5G power consumption is the high power ...

[WhatsApp](#)



5G base stations use a lot more energy than 4G base stations: MTN

A typical 5G base station consumes up to twice or more the power of a 4G base station, writes MTN Consulting Chief Analyst Matt Walker in a



new report entitled " Operators ...

[WhatsApp](#)



Energy Consumption of 5G, Wireless Systems and the Digital ...

These 5G base stations consume about three times the power of the 4G stations. The main reason for this spike in power consumption is the addition of massive MIMO and ...

[WhatsApp](#)



How Much Power Does 5G Base Station Consume? , Huijue ...

Have you ever wondered how much energy our hyper-connected world is consuming? 5G base stations, the backbone of next-gen connectivity, now draw 3-4 times more power than their 4G ...

[WhatsApp](#)



A technical look at 5G energy consumption and performance

To understand this, we need to look closer at the base station power consumption characteristics (Figure 3). The model shows that there is significant energy consumption in the ...

[WhatsApp](#)





[Parsing the 5G power equation: Is 5G actually greener?](#)

When the conversation turns to 5G's potential to be a "greener" technology than previous generations, the subject of power usage is one of the first that comes up. Most often, ...

[WhatsApp](#)



[Power Consumption Modeling of 5G Multi-Carrier Base ...](#)

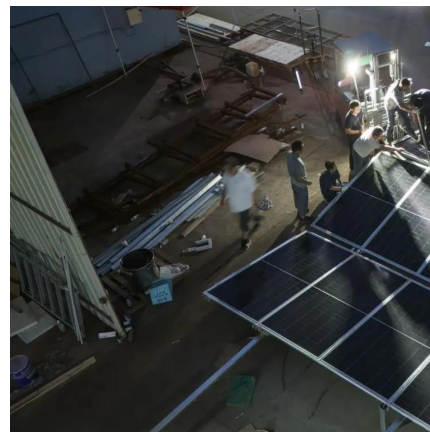
However, there is still a need to understand the power consumption behavior of state-of-the-art base station architectures, such as multi-carrier active antenna units (AAUs), as well as the ...

[WhatsApp](#)

Energy Consumption of 5G, Wireless Systems and the Digital ...

"A 5G base station is generally expected to consume roughly three times as much power as a 4G base station. And more 5G base stations are needed to cover the same area," -IEEE ...

[WhatsApp](#)



Quick guide: components for 5G base stations and antennas

Base stations A 5G network base-station connects other wireless devices to a central hub. A look at 5G base-station architecture includes various equipment, such as a 5G ...

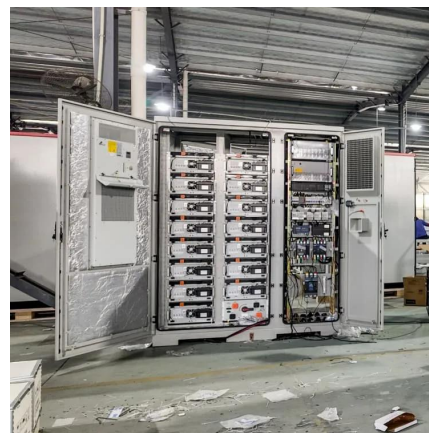
[WhatsApp](#)



5G Base Stations: The Energy Consumption Challenge

Early deployments indicate that 5G base stations require 2.5-3.5 times more power compared to a 4G one. Moreover, C-band, i.e., 3.4 GHz to 4.2 GHz, is deemed as the most popular 5G ...

[WhatsApp](#)



Contact Us

For catalog requests, pricing, or partnerships, please visit:
<https://www.straightta.co.za>