

How many strings of lithium batteries are needed for a 48v inverter in Serbia





Overview

Short answer: A 48V battery typically requires 13–16 lithium-ion cells in series, depending on cell chemistry. Lithium iron phosphate (LiFePO₄) cells need 15–16 cells (3.2V each), while standard Li-ion cells require 13–14 cells (3.6–3.7V each). How many cells are in a 48V lithium battery?

Therefore, for most cases involving a standard setup with no special requirements or constraints, you would find either thirteen or fourteen cells in a typical 48V lithium battery configuration.

How many lithium batteries can be connected in series?

Lithium battery pack 48V20AH generally single lithium battery is 3.5V, so 48V lithium battery pack needs $48/3.5=13.7$, just take 14 in series. If the manufacturer has provided a set of 12V lithium batteries, then 4 can be connected in series. As long as the output voltage is 48V, the current is 2A or 4A.

How many cells does a 48v battery need?

Generally speaking, more cells are needed for higher capacity batteries as each cell contributes to overall capacity. For example, if each individual cell has a capacity of 2 ampere-hours (Ah), then a 48V battery with a total capacity requirement of 50 Ah would require approximately 25 cells (50 Ah / 2 Ah per cell).

How much battery do I need to run a 3000-watt inverter?

You would need around 24v 150Ah Lithium or 24v 300Ah Lead-acid Battery to run a 3000-watt inverter for 1 hour at its full capacity Here's a battery size chart for any size inverter with 1 hour of load runtime Note! The input voltage of the inverter should match the battery voltage.

How many batteries should a 48V inverter have?

Most folks just add 6 or 8 batteries in parallel and accept the short battery life



and imbalance problems. Using a 48V inverter allows you to build a bigger bank four times the size with 12 batteries while still following the 3 strings in parallel limitation.

What voltage should a 12V inverter run on?

The input voltage of the inverter should match the battery voltage. (For example 12v battery for 12v inverter, 24v battery for 24v inverter and 48v battery for 48v inverter Summary What Will An Inverter Run & For How Long?



How many strings of lithium batteries are needed for a 48v inverter



Calculate Battery Size For Any Size Inverter (Using Our Calculator)

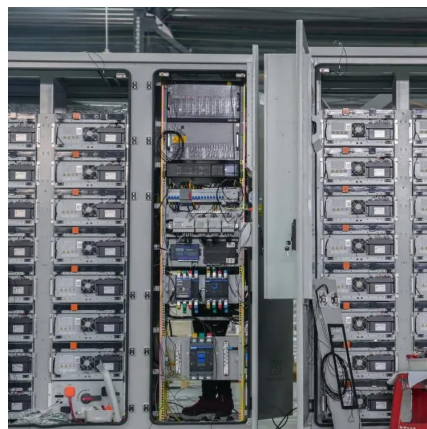
Struggling to choose the right Ah for your 48V Li-ion battery pack? This in-depth guide covers everything you need to make the best choice. Find out more now!

[WhatsApp](#)

Calculate Battery Size For Any Size Inverter (Using Our Calculator)

You would need around 24v 150Ah Lithium or 24v 300Ah Lead-acid Battery to run a 3000-watt inverter for 1 hour at its full capacity. Here's a battery size chart for any size inverter ...

[WhatsApp](#)



Can You Use a 12V Battery with a 48V Inverter?

Using a 12V battery with a 48V inverter is not advisable as it can lead to equipment damage and safety hazards. Connecting a lower voltage battery to a higher voltage inverter ...

[WhatsApp](#)

How Many Cells Are in a 48V Battery? Configurations, Capacity, ...

In a 48V system, typically 13 lithium-ion cells are connected in series, as each cell provides approximately 3.7V when fully charged. This



setup is common in electric vehicles and ...

[WhatsApp](#)



How many strings are 48V20AH lithium battery packs? How to ...

In the lithium battery pack, multiple lithium batteries are connected in series to obtain the required operating voltage. If what is needed is higher capacity and higher current, ...

[WhatsApp](#)



Sizing and Building a Battery Bank , Africa Field Systems Engineers

Sticking with 3 parallel strings minimizes the problem, but a single string is best. When doing both series and parallel, do not cross connect the batteries in the middle of the series strings. Only ...

[WhatsApp](#)



How many series strings of batteries can I have in parallel.

Hi, I am thinking about getting a 24v hybrid inverter eco-worthy. I can only afford to start with 2 batteries which will give me a 2.5kWh capacity. Can I add 3 more series strings in ...

[WhatsApp](#)





How Many Lithium-Ion Cells Are Needed for a 48V Battery?

To make a 48V 10Ah battery with 18650 cells (2Ah per cell), you need 13 cells series and 5 parallel lines, totaling 65 cells (13s5p). For higher capacity cells, even fewer are ...

[WhatsApp](#)



How Many Batteries Do You Need for 48V?, How Many Batteries 48V

Only one battery is required for a 48V system, eliminating the need for complicated wiring and multiple battery connections. This makes installation faster and simpler, reducing ...

[WhatsApp](#)

How Many Cells in Series Are Needed for a 48V Battery?

Short answer: A 48V battery typically requires 13-16 lithium-ion cells in series, depending on cell chemistry. Lithium iron phosphate (LiFePO4) cells need 15-16 cells (3.2V each), while ...

[WhatsApp](#)



How Many Lithium Cells for 48V? Lithium Cells for 48V System

Choosing the correct number of lithium cells for a 48V battery system is essential for ensuring optimal performance, safety, and longevity. Typically, a 48V lithium battery pack ...

[WhatsApp](#)



Contact Us

For catalog requests, pricing, or partnerships, please visit:
<https://www.straighta.co.za>