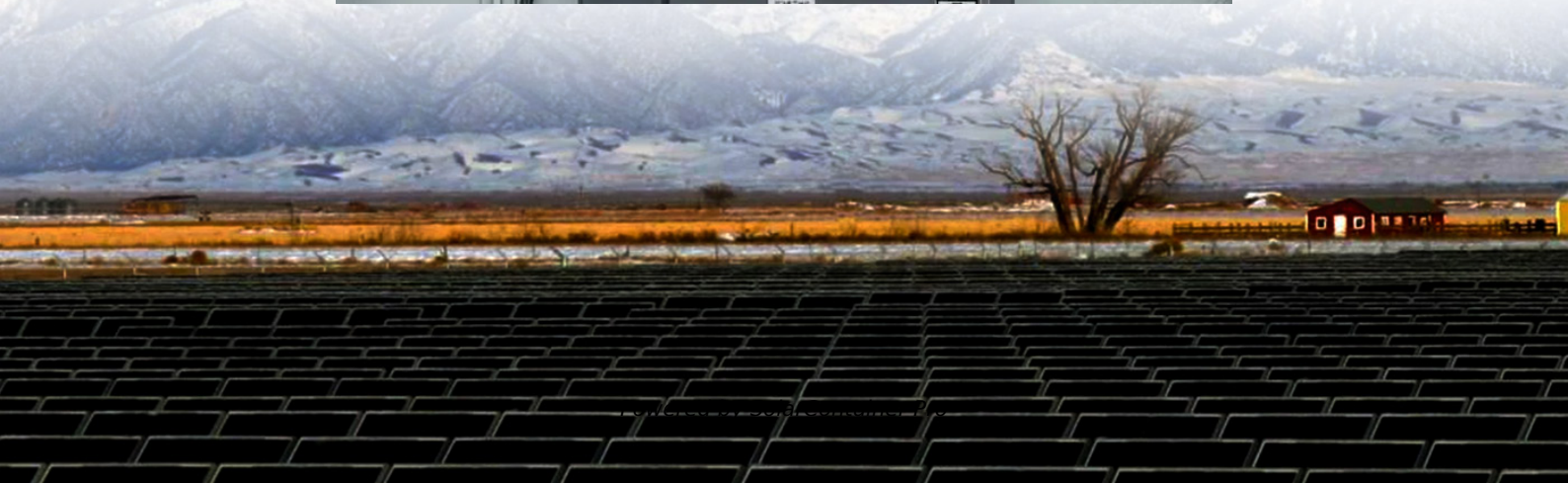
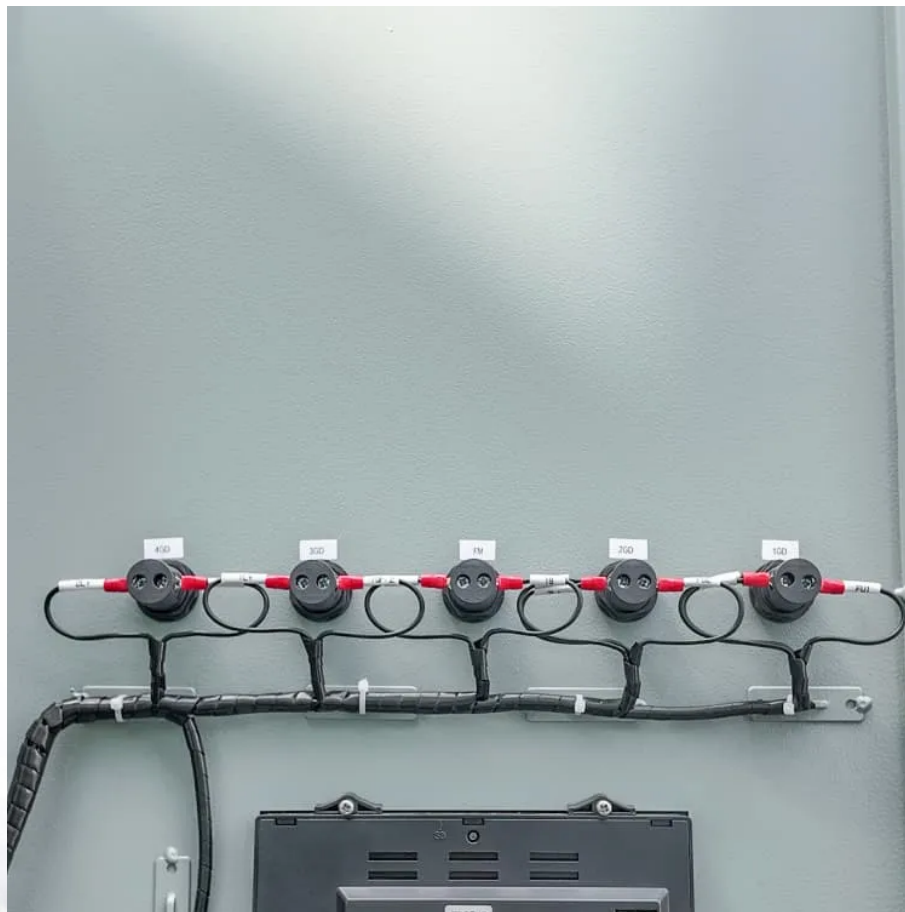


# **How many square meters of battery are needed for a 5G telecom base station**





## Overview

---

Why should a 5G base station have a backup battery?

The backup battery of a 5G base station must ensure continuous power supply to it, in the case of a power failure. As the number of 5G base stations, and their power consumption increase significantly compared with that of 4G base stations, the demand for backup batteries increases simultaneously.

Does a 5G base station use energy storage power supply?

In this article, we assumed that the 5G base station adopted the mode of combining grid power supply with energy storage power supply.

How much power does a 5G small cell use?

While 4G macro towers consume between 1-2 kilowatts (kW) of power, 5G small cells typically consume only 10-50 watts. For telecom providers, this means that while each individual 5G small cell uses less power than a 4G macro tower, the sheer number of small cells required results in a higher overall power demand.

How many 5G base stations are there in a square kilometer?

Because no matter where you live in any community, there are densely packed base stations. There are 50 base stations in one square kilometer, and you can't avoid them. At that time, the street lamps, power poles and billboards you saw were probably 5G base stations in disguise. There is no way to avoid it.

Are lithium batteries suitable for a 5G base station?

2) The optimized configuration results of the three types of energy storage batteries showed that since the current tiered-use of lithium batteries for communication base station backup power was not sufficiently mature, a brand- new lithium battery with a longer cycle life and lighter weight was more suitable for the 5G base station.



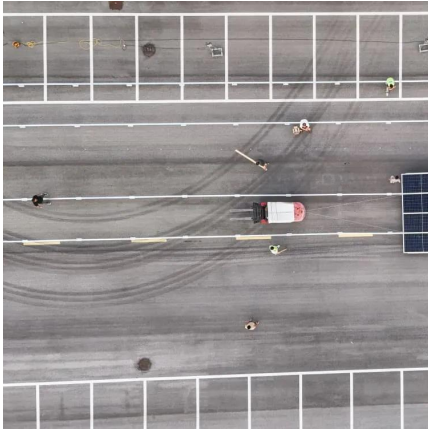
Are 5G base stations causing more energy consumption?

However, Li says 5G base stations are carrying five times the traffic as when equipped with only 4G, pushing up power consumption. The carrier is seeking subsidies from the Chinese government to help with the increased energy usage.



## How many square meters of battery are needed for a 5G telecom ba

---



### 5G base stations use a lot more energy than 4G base stations: MTN

Insufficient battery capacity: more backup battery capacity is needed, yet traditional lead-acid batteries have low energy density and their capacities are difficult to expand.

[WhatsApp](#)

### [5G Towers vs. 4G: How Many More Are Needed? PatentPC](#)

A single 5G base station can handle up to 1 million connected devices per square kilometer, compared to only 100,000 for 4G. This is a game-changer for the Internet of Things (IoT), ...

[WhatsApp](#)



### [Learn What a 5G Base Station Is and Why It's Important](#)

A 5G base station is the heart of the fifth-generation mobile network, enabling far higher speeds and lower latency, as well as new levels of connectivity. Referred to as gNodeB, 5G base ...

[WhatsApp](#)

### Take Charge of Your Energy Storage Assets in 5G Networks

More base stations will be needed to provide 5G coverage to the equivalent-sized 4G area. According to a global survey of telecom



executives, 90 percent believe 5G will result in higher ...

[WhatsApp](#)



### [How Do Telecom Battery Dimensions Impact 5G Network...](#)

Telecom battery dimensions directly influence 5G network deployment by affecting space allocation, backup power capacity, and infrastructure scalability. Compact, modular, and ...

[WhatsApp](#)



### **5G Base Station Market Size, Share, Trends, Industry , IGR**

A recent report published by Infinium Global Research on 5G base station market provides in-depth analysis of segments and sub-segments in the global as well as regional 5G base ...

[WhatsApp](#)



### **Cradle to the Grave: Sustainability and the Life of a Base Station**

Around 30 years ago, telecom networks were huge monstrosities, the size of a garden shed - but some modern "small cells" are no larger than an iPad and weigh only a ...

[WhatsApp](#)







## 5G means Batteries. A lot of them

In order to make 5G efficient, batteries are indispensable. With the advent of 5G, not only that 4G base stations have to be upgraded or replaced, the number of base stations required for 5G ...

[WhatsApp](#)



## Small Cells, Big Impact: Designing Power Solutions for 5G ...

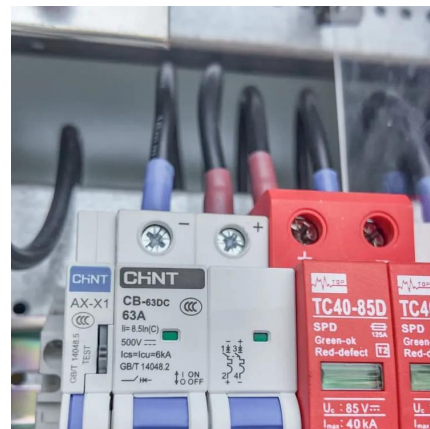
The need to increase the number of base stations to provide wider and more dense coverage has led to the creation of small cells. Small cells are a new part of the 5G platform that increase ...

[WhatsApp](#)

## Optimal configuration of 5G base station energy storage ...

To maximize overall benefits for the investors and operators of base station energy storage, we proposed a bi-level optimization model for the operation of the energy storage, ...

[WhatsApp](#)



## Small Cells, Big Impact: Designing Power Solutions for 5G ...

When a mobile device is close to a small-cell base station, the power needed to transmit the signal is much lower compared to the power needed to transmit a signal from a cell tower far ...

[WhatsApp](#)



### 5G Base Station Deployments; Open-RAN Competition & HUGE 5G ...

A typical 5G base station consumes up to twice or more the power of a 4G base station, writes MTN Consulting Chief Analyst Matt Walker in a new report entitled " Operators ...

[WhatsApp](#)



### Size, weight, power, and heat affect 5G base station designs

For example, in dense urban areas, 5G networks will rely heavily on mmWave spectrum in massive MIMO antennas to deliver gigabit speeds. The higher the frequency, the ...

[WhatsApp](#)

### Technical Requirements and Market Prospects of 5G Base Station ...

5G base station chips play a critical role in the construction of 5G networks. As technology continues to advance, base station chips will demonstrate higher performance and ...

[WhatsApp](#)





## Contact Us

---

For catalog requests, pricing, or partnerships, please visit:  
<https://www.straighta.co.za>