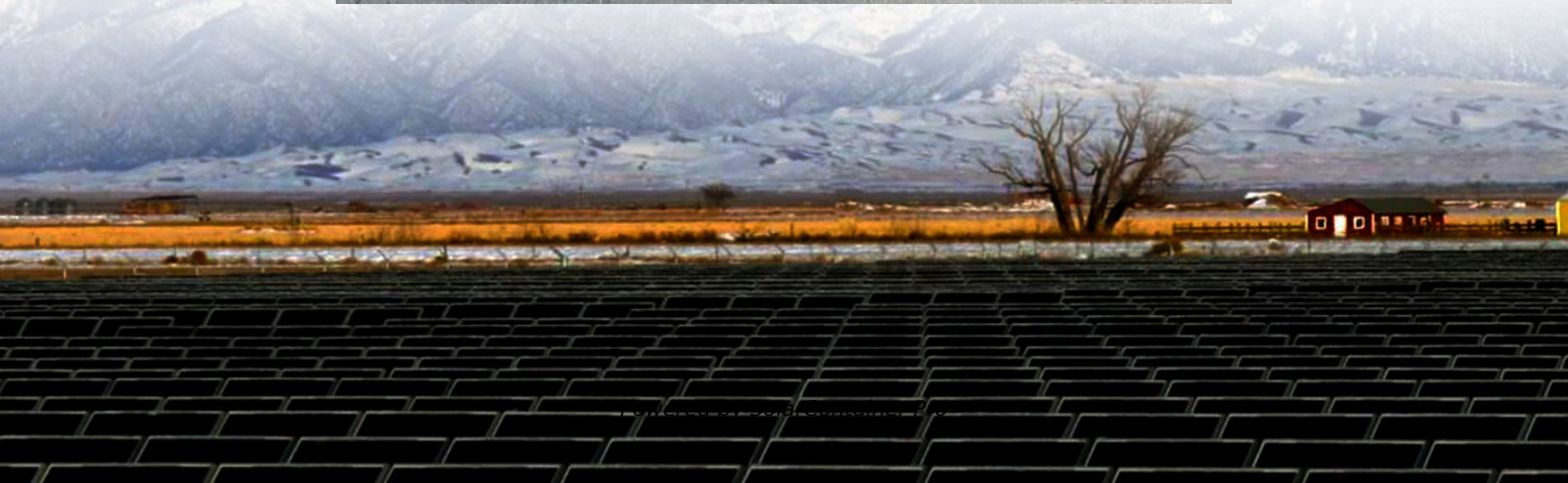


How many sets of photovoltaic panels can be installed on a 60kw inverter





Overview

How many solar panels can an inverter handle?

To effectively determine the number of solar panels an inverter can handle, you must first assess the size of your solar panel array. The overall capacity of your solar installation is defined by the wattage and number of panels. You can expect that the inverter should match or slightly exceed the combined wattage produced by the solar panels.

How many solar panels can a 5 kW inverter use?

You will also need to consider the wattage of the solar panels you plan to use. For example, if you have a 5 kW inverter and each of your solar panels is rated at 300 watts, you can calculate the maximum number of panels by dividing the inverter's capacity by the panel wattage: $5,000 \text{ watts (inverter)} / 300 \text{ watts (panel)} = \text{approximately } 16.67$.

How much solar power can a 4000 watt inverter have?

A solar array can be up to 130% of the inverter capacity. So if you have a 4000 watt inverter you can install a 5200 watt solar power system. With a 5kw inverter, you can have up to 6.5 kw of solar power. There are many ways to calculate inverter sizes, but we will stick to the simplest methods.

What is the maximum input voltage of a solar panel inverter?

The maximum input voltage of a solar panel inverter determines how you should set up your solar panels. Here's an example: If an inverter has a maximum input voltage of 600V and each panel produces 40V, you could connect up to 15 panels in series ($15 \times 40V = 600V$).

How many solar panels can a string inverter hold?

Most string inverters have 3 inputs that can hold 8 panels each for 24 in total. The specifications will vary so make sure to check the inverter before connecting any solar panel. Generally, an inverter can handle up to 30% more



power than its rating. Given that solar panels do not always produce at peak power, this should not be an issue.

Do solar inverters have a rated capacity?

Ratings on solar inverters often give the false impression that you can connect as many panels as you like, as long as you're under the stated power output. This leads to a misconception that exceeding the rated capacity is acceptable if you distribute loads wisely.



How many sets of photovoltaic panels can be installed on a 60kw in



[How to Size a Solar System \[Step-by-Step Guide\]](#)

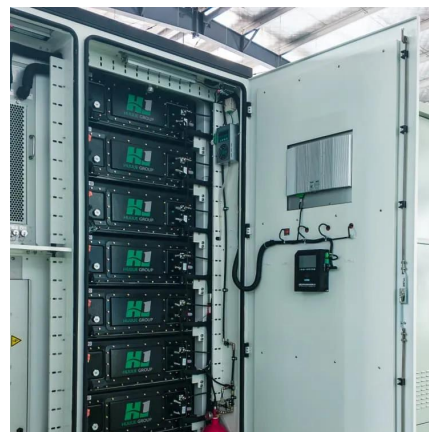
Once you have your final array size, simply divide by the wattage of your desired solar panels to figure out how many panels you need. Using our example of a 7.2 kW (7,200-watt) array for ...

[WhatsApp](#)

[6.6kw Solar System & How Much It Will Cost To Install](#)

How Many Panels Make Up A 6.6kW Solar System? A solar panel can range in output, it's common to see solar panels today at around 300 watts per panel to 400 watts per panel. The ...

[WhatsApp](#)



Can you add more panels to an already maxed out inverter? : r

I recently got a 6.6kw system installed (6.6kw panels, 5kw froniux inverter). It provides plenty of power in good conditions, inverter seem to top out around 5.3kw at peak.

[WhatsApp](#)

[Solar Inverter Online in India , Polycab](#)

A. The primary function of a solar inverter is to convert the direct current produced by Solar panels into AC electricity, which is the standard mode of electricity to operate appliances in ...



[WhatsApp](#)



A homeowner's guide for choosing the right number of solar panels ...

Solar panels must be installed on a surface that is free of obstructions, and microinverters can help maximize electricity generation for any solar panels that become ...

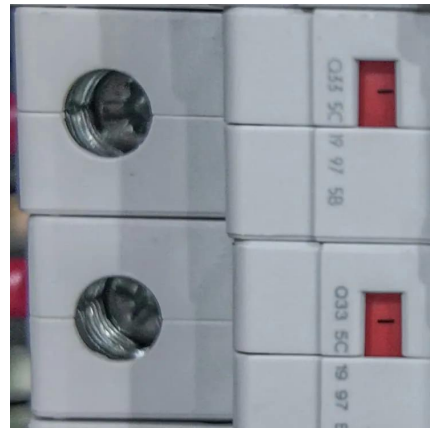
[WhatsApp](#)



Can You Have Too Many Solar Panels? Limits And Expectations

DC power is run through an inverter to turn it into usable AC power, the inverter will regulate how much energy it converts. Most people who are on the fence about solar power don't want to ...

[WhatsApp](#)



How Many Solar Panels Can I Connect to an Inverter? A ...

This guide will discuss the factors that determine how many solar panels can be connected to an inverter, such as inverter specifications, wiring configurations, and the use of charge controllers.

[WhatsApp](#)





[TECHNICAL SPECIFICATIONS OF ON-GRID SOLAR PV...](#)

civil work, Mounting of Module Structures, PV Module Installation, Inverter Installation, DC/AC Cabling and interconnections, Installation of Lightning Arresters and Earthing System as per ...

[WhatsApp](#)



How many solar panels can I use with a particular inverter?

To determine the maximum number of solar panels you can use with an inverter, take the inverter's maximum input voltage and divide by your solar panel's Open Circuit ...

[WhatsApp](#)



How Many Solar Panels, Batteries & Inverter Do I Need for Home?

Below is a DIY (do it yourself) complete note on Solar Panel design installation, calculation about No of solar panels, batteries rating / backup time, inverter/UPS rating, load ...

[WhatsApp](#)



Contact Us

For catalog requests, pricing, or partnerships, please visit:
<https://www.straighta.co.za>