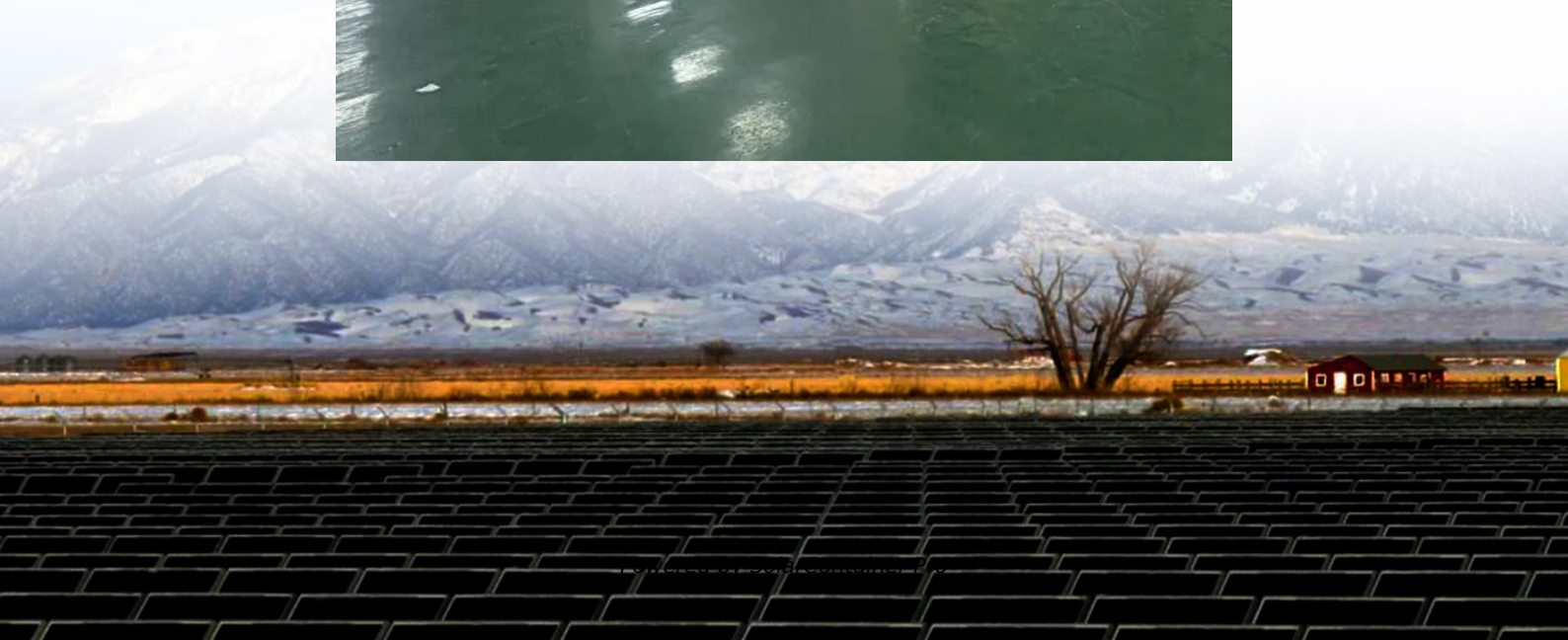


How many photovoltaic panels can a 20kw inverter install at most





Overview

How many solar panels can an inverter handle?

To effectively determine the number of solar panels an inverter can handle, you must first assess the size of your solar panel array. The overall capacity of your solar installation is defined by the wattage and number of panels. You can expect that the inverter should match or slightly exceed the combined wattage produced by the solar panels.

How many solar panels can a 5 kW inverter use?

You will also need to consider the wattage of the solar panels you plan to use. For example, if you have a 5 kW inverter and each of your solar panels is rated at 300 watts, you can calculate the maximum number of panels by dividing the inverter's capacity by the panel wattage: $5,000 \text{ watts (inverter)} / 300 \text{ watts (panel)} = \text{approximately } 16.67$.

How to choose a solar inverter?

You can expect that the inverter should match or slightly exceed the combined wattage produced by the solar panels. Therefore, if you have an array of 20 solar panels, each with a capacity of 300 watts, the total output will be 6000 watts, which is an important benchmark for choosing your inverter.

How many solar panels do I need for a 5kW system?

If you are using only 400-watt solar panels, you will need 13 400-watt solar panels for a 5kW solar system ($13 \times 400 \text{ watts}$ is actually 5200 watts, so this is a 5.2kW system). Quite simple, right?

You can also mix solar panels with different wattages.

What size solar inverter do I Need?

The size of your inverter will ultimately be determined by the wattage of your



solar panel array and the amount of power you want to produce. A 3000-watt inverter is a good choice for most households who want to use solar power.

How much power does a 5KVA inverter need?

If you are looking to power a 5kva inverter with solar panels, you will need at least 18 250-watt panels. This is because the inverter will require 1,500 watts of power and each panel produces about 250 watts of power. Inverters also have a peak wattage, which is usually about 50% higher than the continuous wattage.



How many photovoltaic panels can a 20kw inverter install at most



[How Many Panels In 1kW, 3kW, 5kW, 10kW, 20kW Solar ...](#)

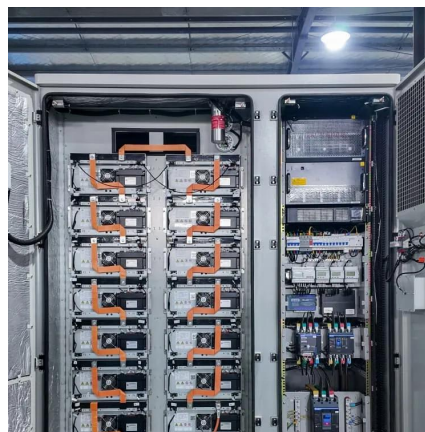
For a 20kW solar system, you would need either 200 100-watt solar panels, 100 200-watt solar panels, 68 300-watt solar panels, or 50 400-watt solar panels. This is just how easy it is.

[WhatsApp](#)

How Many Solar Panels Can a 20kW Inverter Handle? Let's Do ...

That's essentially the "how many panels for a 20kW inverter" debate. While the theoretical maximum is 50 x 400W panels, real-world factors like panel efficiency, sunlight conditions, and ...

[WhatsApp](#)



How Many Solar Panels Can I Connect to an Inverter? A ...

This guide will discuss the factors that determine how many solar panels can be connected to an inverter, such as inverter specifications, wiring configurations, and the use of charge controllers.

[WhatsApp](#)

[50kw solar system - 50kw solar panel kit for home](#)

The grid-connected kits usually include photovoltaic panels, a DC-to-AC inverter, a rack mounting system, hardware, and cabling. When



on-grid equipment generates surplus ...

[WhatsApp](#)



How many watts of solar panels can be installed on a 20kw inverter

When contemplating the wattage of solar panels that can be installed alongside a 20 kW inverter, one should perform meticulous calculations. A common rule of thumb ...

[WhatsApp](#)



[Solar System Sizing Tool & Calculator](#)

Easy to use solar sizing calculator for entry level solar systems. Input monthly electricity cost, electricity consumption or input detailed electricity usage. The calculator can be used to ...

[WhatsApp](#)



Contact Us

For catalog requests, pricing, or partnerships, please visit:
<https://www.straighta.co.za>