

How many panels are required per square meter





Overview

How many solar panels do I Need?

If each of these viable square feet generates 17.25 watts of electricity, the combined 1500 sq ft will be able to generate more than 25kW per peak sun hour (25.875kW, to be exact). To construct such a system, you will have to either place 258 100-watt solar panels, 86 300-watt solar panels, or 64 400-watt solar panels on your roof.

How many solar panels can you put on an 800 sq ft roof?

Now, by average solar panel wattage per square foot, we can put a 10.35kW solar system on an 800 sq ft roof. This is how many solar panels you can put on this roof: If you only use 100-watt solar panels, you can put 103 100-watt solar panels on the roof.

How much space do you need to install solar panels?

You must allow for a “3-ft clearance down from the ridge of a pitched roof” is an example from the IFC code. In general, when all these codes are applied, we can use about 75% of the total square footage of our roof for installing solar panels. Size of solar panels (or, better yet, watts per square foot of solar panels).

How much surface area do solar panels need?

The required surface area depends on the number of panels, their wattage, and physical dimensions. Roof orientation, shading, and available space also play significant roles. How do I assess my roof’s suitability for solar panels?

.

How many solar panels do you need for a 1500 sq ft house?

The average monthly energy consumption of a 1,500 sq ft house is estimated to be around 630 kWh. Provided that your solar panel has a production ratio of



1.6 and a wattage of 300, the house would require approximately 15.75 or 16 solar panels to meet this energy demand. How Many Solar Panels Are Needed for a 2,500 Sq. Ft. House?

.

How many Watts Does a solar panel produce per sq ft?

In fact, by averaging different wattages and dimensions of solar panels, we can see that an average solar panel will produce 17.25 watts per sq ft of roof area. By understanding all these 3 key inputs, we can write the equation for theoretically maximum solar rooftop solar system size like this:



How many panels are required per square meter



How many square meters does the solar panel use? , NenPower

When considering the space occupied by solar panels, the dimensions greatly influence how many panels can fit into a certain area. Most conventional solar panels measure ...

[WhatsApp](#)

How to calculate the surface area required by solar panels

Panel Dimensions: Standard solar panels are typically around 1.7 meters by 1 meter (1.7m²).
Total Surface Area: Multiply the number of panels by the area of one panel. ...

[WhatsApp](#)



[How Many Solar Panels Do I Need? Home Solar Calculator](#)

Most homeowners need 15 to 19 solar panels to power their homes. However, the exact number of solar panels you need can depend on the size of your home, your energy usage, and the ...

[WhatsApp](#)



How to calculate the surface area required by solar panels

FAQ Section How do I calculate the number of solar panels I need? To calculate the number of panels, divide your required system size (in kW)



by the wattage of the panels ...

[WhatsApp](#)



How Many Solar Panels Fit in 1 Square Meter? Your Ultimate ...

That's essentially what installers do when calculating how many solar panels fit in 1m². While the answer isn't as simple as dividing meter space by panel size (we wish!), let's break down this ...

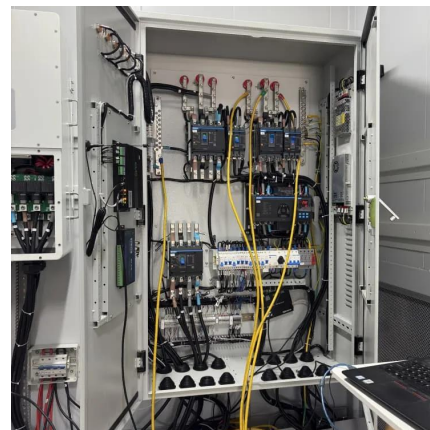
[WhatsApp](#)



How many square meters of solar panels on the roof , NenPower

3. The efficiency of the chosen solar panels will influence the total area needed, as higher efficiency panels generate more power per square meter. 4. Finally, the location will ...

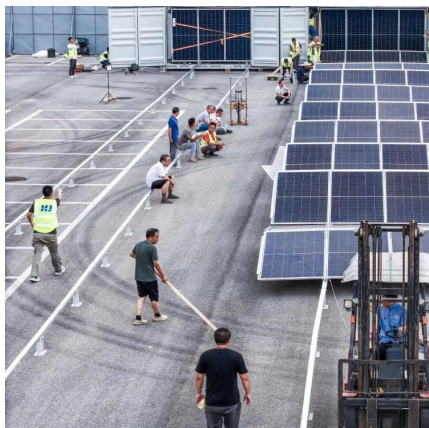
[WhatsApp](#)



How Many Solar Panel Can I Fit on My Roof? Essential ...

Curious about how many solar panels can I fit on my roof? A typical UK home with a 20-30 square meter roof can hold around 10-18 panels, generating 4-7 kilowatts of clean ...

[WhatsApp](#)





Solar Rooftop Calculator: How Many Solar Panels Can Fit On ...

We have calculated how many of either 100-watt, 300-watt, or 400-watt solar panels you can put on roofs ranging from very little 300 sq ft roof to huge 5,000 sq ft roof, and summarized the ...

[WhatsApp](#)



How many square meters of space is required per kw solar panel?

Typical solar panels range from 250W to 400W, translating to an area of about 1.6 to 2.2 square meters per panel, leading to a total space requirement of around 5 to 10 square ...

[WhatsApp](#)

Contact Us

For catalog requests, pricing, or partnerships, please visit:
<https://www.straighta.co.za>