

How many kw inverters does a villa need

制造厂家：上海汇珏科技集团股份有限公司

产品型号：DPF- -48V/500A-G-S

智能监控单元质保期：10年

浪涌保护器质保期：10年

断路器质保期：10年





Overview

Before we go any further, we highly recommend that you choose a pure sine wave inverter. This type of inverter delivers high-quality electricity, similar to your utility company.

We have summarized the appliances that inverters from 300W to 3000W can run depending on their rated maximum power. Note to our readers: Use the above formula to determine.

Most UK homes need at least a 5 kW inverter. While 3.68 kW is common, larger homes or those with batteries benefit from a 5 kW+ system. What is a solar inverter?

A solar inverter converts electricity between “direct current” (DC) and “alternating current” (AC). What size inverter do I Need?

Inverters come in different sizes starting from as little as 125 watts. The typical inverter sizes used for residential and commercial applications are between 1 and 10kW with 3 and 5kW sizes being the most common. With such an array of options, how do you find the right size for you?

An inverter works best when close to its capacity.

How many kW can a solar inverter generate?

Total capacity = $20 \times 500 = 10,000$ watts or 10 kW The industry standard suggests that the inverter's capacity should be between 80% to 125% of the solar panels' capacity. For example, if your panels generate 10 kW: Minimum inverter size = $10,000 \times 0.8 = 8$ kW Maximum inverter size = $10,000 \times 1.25 = 12.5$ kW.

What is a solar inverter sizing calculator?

A solar inverter sizing calculator is a tool used to determine the appropriate size of a solar inverter for your solar power system based on the total power consumption of connected appliances and the size of your solar panel array. It ensures the inverter can handle the peak loads efficiently.



How much power does a 5 kW inverter use?

If your system pushes 5,000 watts, a 5,000-watt (or 5 kW) inverter is usually the move. But it's not always one-to-one. Some setups undersize the inverter a bit—say, 4.6 kW for 5 kW of panels—to save cash without losing much power. It's a balancing act between cost, performance, and when you actually use electricity.

How many kW inverters do I Need?

Therefore, we typically recommend 5 kW inverters which cater even to the peak demand of most British households. Most inverters charge and discharge at the same rate. However, this is not always the case. For example, the Tesla PW3 has a charge capacity of 5 kW and discharge capacity of 11.5 kW.

What is the power output of an inverter?

Power output is the maximum continuous power the inverter can supply to all the loads on the system. Exceeding the power rating by having a larger load (too many appliances) than the inverter can handle will cause it to shut down. The power output of a 3 kW inverter for example is 3000 watts (3 kW).



How many kw inverters does a villa need



[How Big of an Inverter Do I Need to Run a Whole House?](#)

Properly sizing your inverter ensures efficient energy conversion and reliable operation of your solar PV (photovoltaic) system. Let's delve into the factors that determine the ...

[WhatsApp](#)

How do you determine what size of inverter you will need to

Once you figure out how many watts your need at any given instant, then you buy your inverter based on that number. Also, due to inverter efficiency, unaccounted for items (the maids ...

[WhatsApp](#)



[How To Size A Solar Inverter in 3 Easy Steps](#)

Most homes have an average daily consumption of between 9 to 20 kW. Depending on where they fall in that band and the size of their solar array, they will likely use a 3, 5, or 10kW ...

[WhatsApp](#)



[How Many Watt Inverter Do I Need? , Click to Learn More](#)

Introduction Selecting the accurate solar inverter size is extremely important if you want your electrical appliances should function properly



without over-loading the machine. ...

[WhatsApp](#)



What Size Solar Inverter Do I Need? Experts Break It Down

But before you start soaking up the sun, you'll need the right inverter to match your system. This guide breaks down what size solar inverter you actually need--so your setup ...

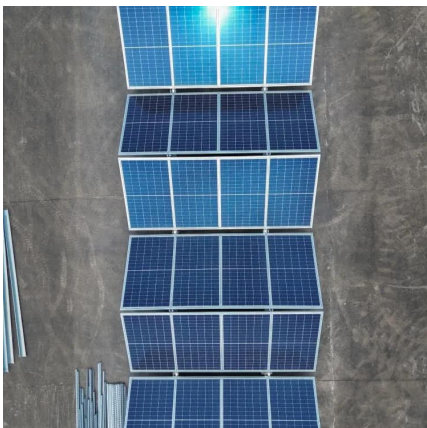
[WhatsApp](#)



How do you determine what size of inverter you will need to

Once you figure out how many watts your need at any given instant, then you buy your inverter based on that number. Also, due to inverter efficiency, unaccounted for items (the ...

[WhatsApp](#)



[How Much Kw Required For Home In India](#)

6. How many AC can run in 1 kW? A 1 kW solar system generates 4 - 5 units a day from morning 9 am to 5 pm which is sufficient to run 1 Inverter AC up to 1.5 ton along with Refrigerator, ...

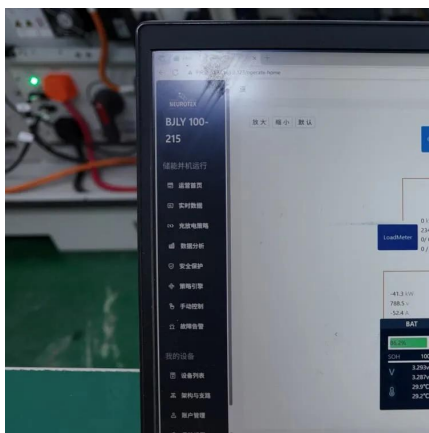
[WhatsApp](#)



What Size Power Inverter Is Needed for a House [Full Guide]

In general, a 3000W to 5000W inverter works well for most homes, but the exact size depends on factors like household appliances, total power consumption, and battery ...

[WhatsApp](#)



Solar Inverter Sizing Guide for Maximum Efficiency , Mingch

In most cases, the inverter size should be close to the size of your solar panel system, within a 33% ratio. For example, a 6.6kW solar array often pairs with a 5kW inverter to ...

[WhatsApp](#)

Contact Us

For catalog requests, pricing, or partnerships, please visit:
<https://www.straightta.co.za>