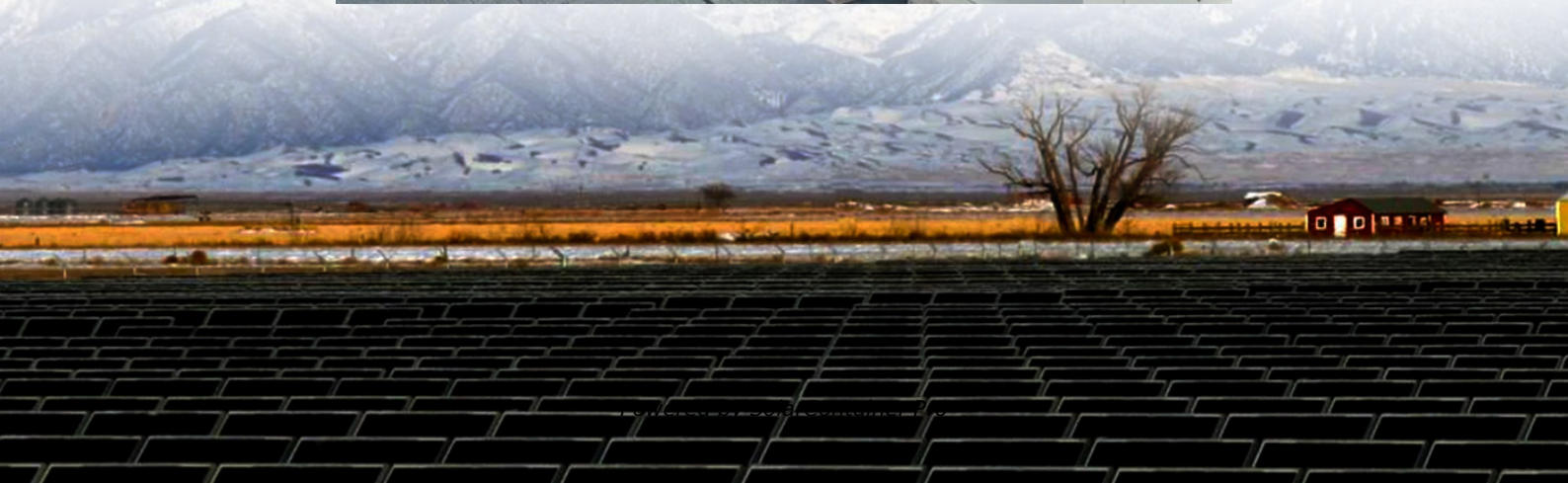


# How many kilowatts of solar photovoltaic installation are there





## Overview

---

How to calculate kilowatt-peak of a solar panel system?

To calculate the KWp (kilowatt-peak) of a solar panel system, you need to determine the total solar panel area and the solar panel yield, expressed as a percentage. Here are the steps involved in this calculation: 1. Find the total solar panel area (A) in square meters by multiplying the number of panels with the area of each panel. 2.

How to calculate solar panel kWp?

How to Calculate Solar Panel KWp (KWh Vs. KWp + Meanings) The calculation is based on standardized radiance, size, and temperature of the panel. Calculating the KWp rating or kilowatts peak rating of a solar panel is essential for determining its peak power output. KWp represents the panel's maximum capacity under ideal conditions.

How many solar panels do you need for a 3KW system?

Number Of Panels (3kW System, 300-Watt Panels) =  $(3\text{kW} \times 1000) / 300\text{W} = 10$  300-Watt Solar Panels You can see that you need 10 300-watt solar panels to construct a 3kW solar system. If you don't get the full number of solar panels (you get 15.67, for example), just round it up (to 16 in this case).

What is a 1 KW solar panel system?

A 1 kW solar panel system typically generates around 750 to 850 kWh of electricity annually. Such a system often comprises multiple individual panels. For example, a possible configuration might involve five panels, each with a capacity of 200 watts, which, when combined, will yield the desired 1 kW output.

What wattages do you need for a solar panel system?

We are using the most common solar panel wattages; 100-watt, 200-watt, 300-watt, and 400-watt PV panels. Here is how many of these solar panels you



will need for the most commonly-sized solar panel systems: Let's break this chart down like this:.

How many kW solar panels do I Need?

As we calculated earlier, the California household needs a 7.2 kW system to cover its electricity needs. A comparable household in Massachusetts needs a 9.9 kW system. So, in less sunny areas like Massachusetts, you might consider choosing highly efficient solar panels to maximize your energy output per square foot.



## How many kilowatts of solar photovoltaic installation are there

---



### Solar system size limits: How much does your local network allow?

As a general rule, 5kW tends to be the upper system size limit for single-phase connections, but some networks allow up to 10kW. There are lots of variations to this theme, ...

[WhatsApp](#)

### Calculate How Much Solar Do I Need?

On our Calculate How Much Solar page, you will learn how much solar power in kilo-watts or kW is needed to generate the kilo-watt hours or kWh of energy used at your property. To estimate ...

[WhatsApp](#)



### How Many Solar Panels Do I Need To Power a House in 2025?

Under the average energy bill slider, the calculator will give you an estimated system size in kW. You can use this number to figure out how many panels you would need.

[WhatsApp](#)

### Calculate How Much Solar Do I Need?

56 rows· On our Calculate How Much Solar page, you will learn how much solar power in kilo-watts or kW is needed to generate the kilo-watt hours or kWh of energy used at your property. ...





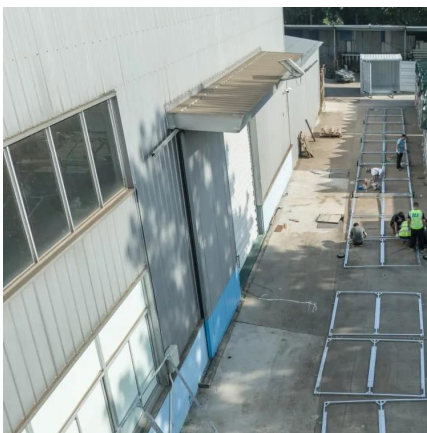
[WhatsApp](#)



### [How Much Do Solar Panels Cost? - Forbes Home](#)

Solar panel costs can be affected by many factors, including system size, type of panel and home electricity needs. We break down these and other factors in our solar panel cost guide.

[WhatsApp](#)



### [6 kW Solar Panel System: Can It Work For Your Home? \(2025\)](#)

Here's what we'll go over in this guide: How much a 6 kW solar system costs Power output and production How many panels you'd need to install How much you can save ...

[WhatsApp](#)



### [How to Calculate Solar Panel KWp \(KWh Vs. KWp + Meanings\)](#)

After learning to calculate solar panel KWp, let's find out how much is 1 KWp. The theoretical annual energy production of 1 KWp is 1,000 kWh. However, do keep in mind that ...

[WhatsApp](#)





### [Calculations for a Grid-Connected Solar Energy System](#)

The grid-connected system consists of a solar photovoltaic array mounted on a racking system (such as a roof-mount, pole mount, or ground mount), connected to a combiner box, and a ...

[WhatsApp](#)



### **How Many Panels In 1kW, 3kW, 5kW, 10kW, 20kW Solar System...**

On top of that, we created a spreadsheet for a number of 100W, 200W, 300W, and 400W solar panels needed for 1kW, 3kW, 5kW, 10kW, and 20kW solar systems (check the chart further ...

[WhatsApp](#)

### **How Many Solar Panels Do I Need?**

1 day ago · Example: Annual usage = 12,000 kWh  
Monthly average = 1,000 kWh  
Daily average = about 33 kWh per day  
This is your starting point to calculate how many panels you need. Step ...

[WhatsApp](#)



### **How many kilowatts of solar photovoltaic power generation**

The average kilowatts generated by a solar photovoltaic (PV) system can vary significantly based on size, efficiency, and geographical location. In general, residential ...

[WhatsApp](#)



### [Ultimate Guide to Sizing Your Solar PV System](#)

Key Factors Affecting Solar PV Sizing 1. Daily Energy Consumption The first step in determining your PV system size is to know how many kilowatt-hours (kWh) of electricity you use per day. ...

[WhatsApp](#)



## Contact Us

---

For catalog requests, pricing, or partnerships, please visit:  
<https://www.straighta.co.za>