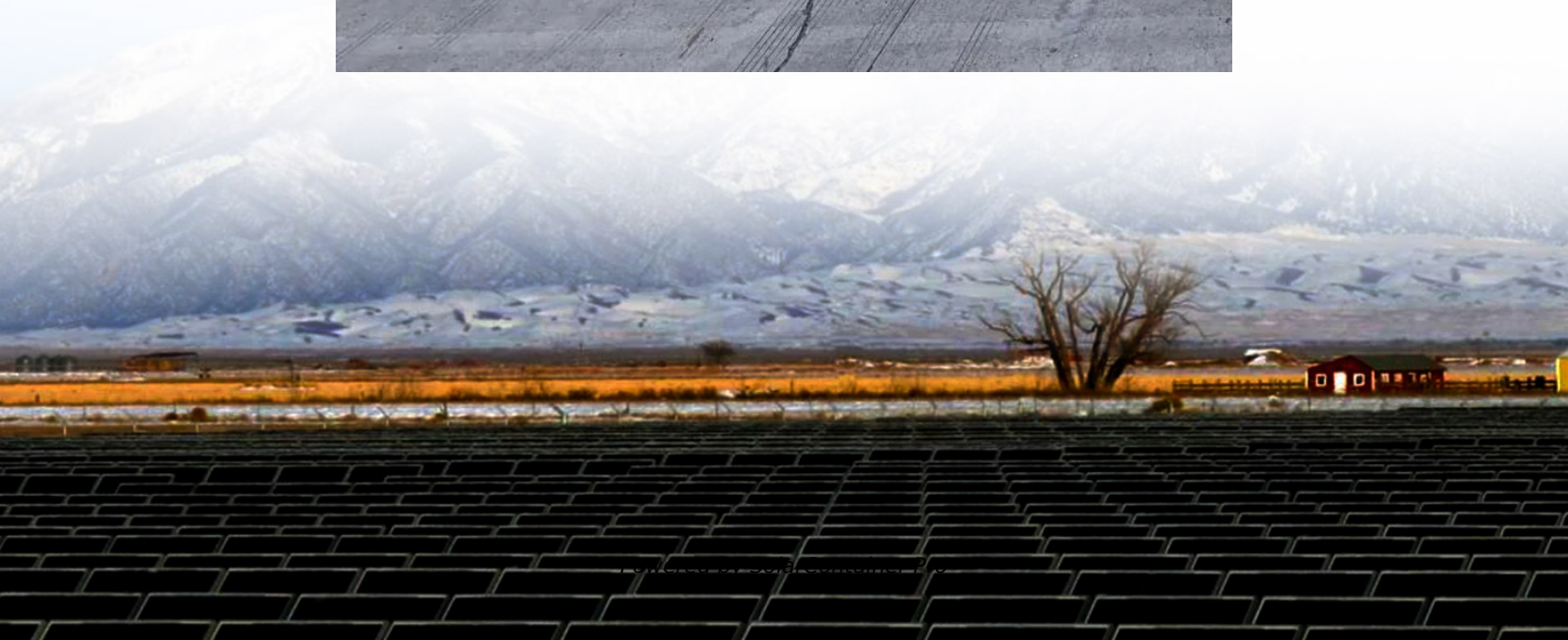


How many inverters does photovoltaic have





Overview

There are three types of inverters available: the string inverter, the power optimizer, and the micro-inverter. You would only need one inverter when using string or power optimizers, but using micro-inverters doesn't require a standalone one.

You would need to purchase an inverter that matches the output of your solar array, so if you have a 6000W (6kW) system, your inverter would need to be rated at 6000W. You.

You can connect inverters in parallel to double the wattage (power) or in series to increase the voltage. You could do this if you have several smaller inverters that you want to connect.

A typical solar panel system requires one inverter, with a power output rating of 3,000 watts. However, some larger systems may require multiple inverters. For example, if you have a solar panel system rated at 10kW, you will need at least three inverters, each rated at 3.33kW. How many solar panels can a solar inverter use?

Since you cannot have a fraction of a panel, you can use up to 16 panels. Additionally, consider the temperature coefficient of the panels and the inverter's efficiency rating for a more accurate setup. Q: What happens if I connect too many solar panels to my inverter?

.

Do I need a solar inverter?

For most home and portable PV systems, you will only need one inverter if you are using either a string inverter or power optimizers for the solar array; if you use micro-inverters, you won't require a standalone inverter as they convert DC to AC at the panel.

Can a solar system have multiple inverters?

A: Yes, using multiple inverters is a common approach for larger solar panel systems. In this setup, the system can be designed with several inverters,



allowing you to connect more panels overall. Each inverter can manage a specific number of panels, and this can enhance system performance and efficiency.

How much solar power can a 4000 watt inverter have?

A solar array can be up to 130% of the inverter capacity. So if you have a 4000 watt inverter you can install a 5200 watt solar power system. With a 5kw inverter, you can have up to 6.5 kw of solar power. There are many ways to calculate inverter sizes, but we will stick to the simplest methods.

What is a solar inverter?

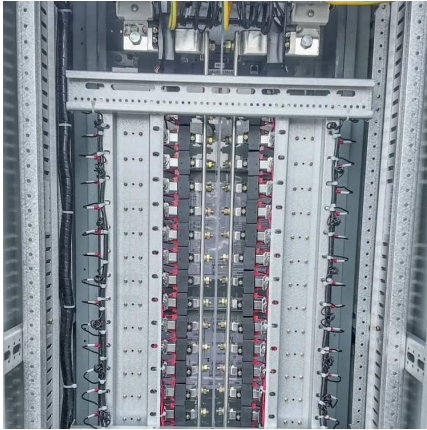
A solar inverter is a crucial component of any solar power system, as it converts the direct current (DC) electricity generated by solar panels into alternating current (AC) electricity that can be used in your home or fed back into the grid.

Are there different types of solar inverters?

A: Yes, there are different types of inverters, and they do affect the number of solar panels you can connect. The most common types are string inverters, microinverters, and power optimizers. String inverters have a set limit on the number of panels they can support due to their centralized nature.



How many inverters does photovoltaic have



How Many Inverters Do I Need for Solar Panels? Find Out Fast

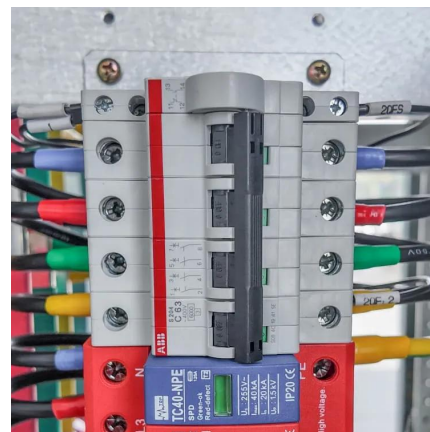
Typically, you only need one inverter for your solar panel system, but for larger setups, you may need multiple inverters or microinverters to optimize power conversion. The ...

[WhatsApp](#)

[How many interfaces does the photovoltaic inverter have](#)

How many solar inverters do I Need? You need at least one solar inverter. Depending on the size and type of solar panel array you choose, you may need more than one. Inverters convert the ...

[WhatsApp](#)



[What Size Inverter Do I Need for My Solar Panel System?](#)

The photovoltaic inverter converts the direct current into alternating current so it's compatible with domestic electrical circuits and appliances. PV inverters are designed to ...

[WhatsApp](#)



How Many Inverters Per Solar Panel: Understanding the Optimal

For most home solar systems, one micro-inverter per panel is ideal, as this allows for maximum efficiency and optimization of energy production.



This setup enables each panel to operate ...

[WhatsApp](#)



How does a solar inverter work? (Functions, types, and benefits)

What is a solar inverter? A solar inverter is a device in a home solar power system that converts DC electricity from solar panels into AC power for home use. It enables grid ...

[WhatsApp](#)



How Many Solar Panels Can I Connect to My Inverter?

Adding solar panels is an obvious solution, but how many of these PV modules can your inverter handle? A solar array can be up to 130% of the inverter capacity. So if you have a 4000 watt ...

[WhatsApp](#)



What Is a Solar Inverter? Key Function & Benefits Explained

Solar inverters are crucial for maintaining the efficiency and safety of your solar system by monitoring performance and protecting against electrical issues. What Is a Solar ...

[WhatsApp](#)





[How Many Inverters Do I Need? \(What You Need\)](#)

For most home and portable PV systems, you will only need one inverter if you are using either a string inverter or power optimizers for the solar array; if you use micro-inverters, ...

[WhatsApp](#)



[How many solar panels can an inverter handle](#)

Types of Solar Inverters For you to fully harness the potential of solar energy, it's important to be aware of the different types of solar inverters available. There are primarily ...

[WhatsApp](#)

[How many interfaces does the photovoltaic inverter have](#)

You need at least one solar inverter. Depending on the size and type of solar panel array you choose, you may need more than one. Inverters convert the solar power harvested by ...

[WhatsApp](#)



How Many Solar Panels Can I Connect to an Inverter? A ...

In this guide, we will explore several factors that determine how many solar panels can be connected to an inverter: Inverter Specifications: Understanding the technical limits and ...

[WhatsApp](#)



Contact Us

For catalog requests, pricing, or partnerships, please visit:
<https://www.straighta.co.za>