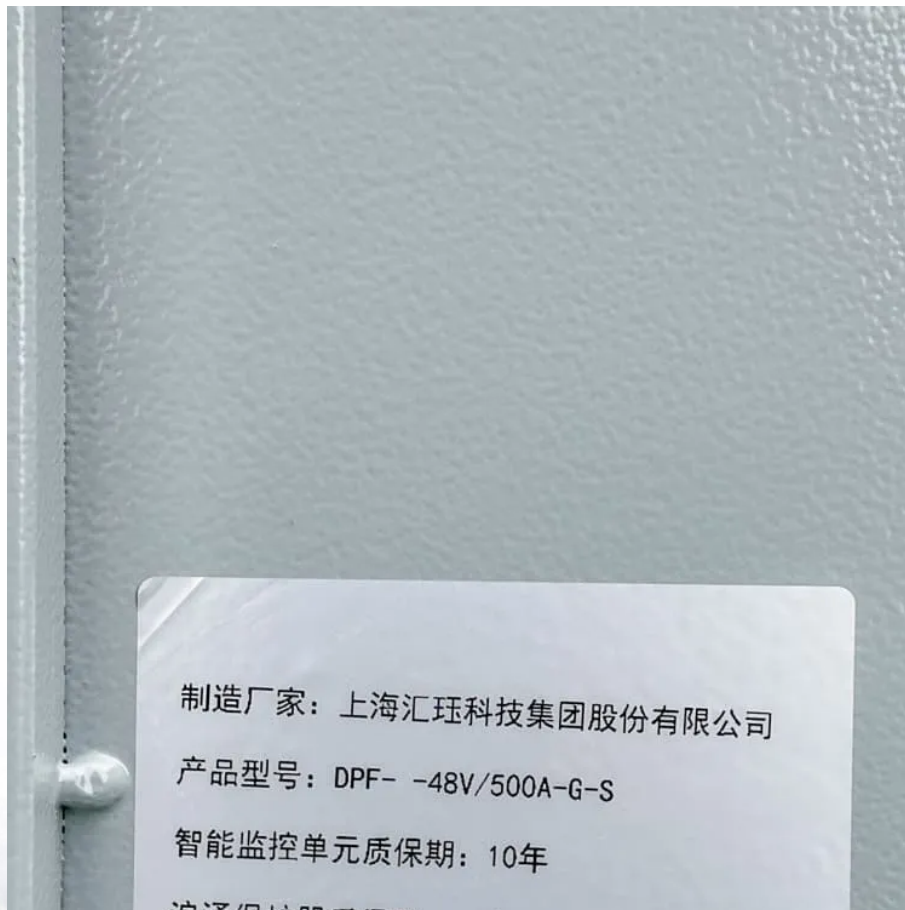


How many hours does outdoor power supply for industrial and commercial use





Overview

What are the electrical requirements for an industrial property?

The electrical requirements for an industrial property depend on the type of industrial property. For example, warehouses and distribution centers typically require three-phase electric power systems, while light manufacturing buildings may require less power.

What voltage does a commercial building use?

The most common commercial building electric service in North America is 120/208 volt wye, which is used to power 120 volt plug loads, lighting, and smaller HVAC systems. In larger facilities the voltage is 277/480 volt and used to power single phase 277 volt lighting and larger HVAC loads. In western Canada 347/600V is common.

How much electricity does an industrial property need?

Although three-phase electricity is relatively standard for industrial assets, where they differ is often in terms of how many amps of electricity the property can accommodate. This can range anywhere from 200 to 2,000 amps or more. It is important to understand what a potential tenant may need in terms of electrical supply.

What type of power system do you need for a warehouse?

For example, warehouses and distribution centers typically require three-phase electric power systems, while light manufacturing buildings may require less power. Data/communications centers usually require specialized floor slabs and HVAC systems to keep electronic equipment in good condition.

What type of power system do industrial properties use?

Most industrial properties — especially newer ones that have more intensive energy requirements — use a three-phase power system. This type of system is named for its three-wire alternating current power circuit, which is able to



deliver larger loads of electricity compared to the single-phase systems found in most residential properties.

Are uninterruptible power supplies legally required?

Uninterruptible power supplies serving as the legally required standby power source must comply with 701.12(A) and (B). (D) Separate Service. If approved by the authority having jurisdiction, an additional service installed in accordance with Article 230 is permitted to serve as a legally required source of power.



How many hours does outdoor power supply for industrial and commercial



[National Electrical Code \(NEC\) Rules for Outdoor Wiring](#)

Used primarily in industrial facilities to provide power for three-phase motor loads, and in utility power distribution applications. Nominal service voltages of 240, ...

[WhatsApp](#)

Outdoor AC UPS , Industry-Leading Power Solutions by TSI Power

TSI Power offers a comprehensive suite of accessories for the Outdoor XUPS. Mounting brackets, battery heaters, maintenance bypass switches, security solutions, and more are available. ...

[WhatsApp](#)



How To Calculate Business Energy Consumption , Diversegy

Many businesses are looking for ways to reduce energy costs and become more energy efficient. Starting with your business energy consumption is the best first step towards ...

[WhatsApp](#)



[How Much Does it Cost to Install Outdoor Socket in 2025](#)

Why install an outdoor socket? If you want to use electrical equipment safely outside your home then the best way is via an outdoor socket, or



exterior power point. In this guide we ...

[WhatsApp](#)



Introduction to Electrical Power Requirements for Buildings

To determine appropriate load estimating factors, using the tables and factors in this manual as guides to analyze the characteristics of each load. Consider items such as environmental ...

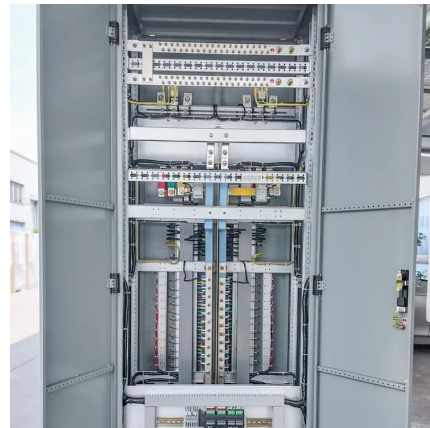
[WhatsApp](#)



National Electrical Code (NEC) Rules for Outdoor Wiring

With most residential outdoor wiring projects, the relevant code requirements pertain to installing outdoor receptacles and lighting fixtures, and to running wiring above and ...

[WhatsApp](#)



Choosing an Industrial Pressure Washer , Power Washer Guide

How to Choose an Industrial Pressure Washer
When selecting a pressure washer, you first want to make sure that you choose equipment that can stand up to the demands of industrial and ...

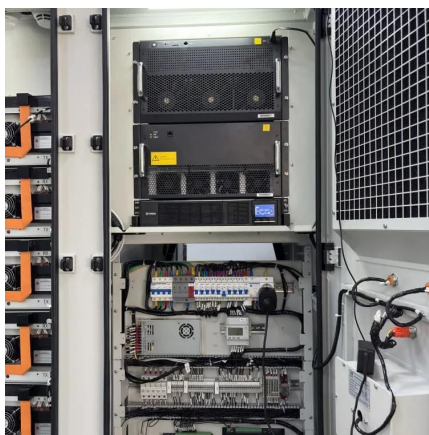
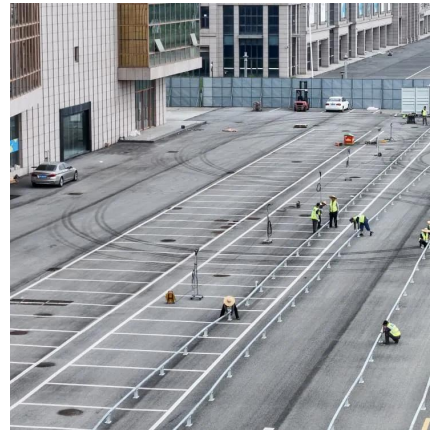
[WhatsApp](#)





[Commercial Buildings Energy Consumption Survey \(CBECS\)](#)

FAQS > Overview Data Analysis & Projections
[WhatsApp](#)



How Much Electricity Does an Industrial Property Require?

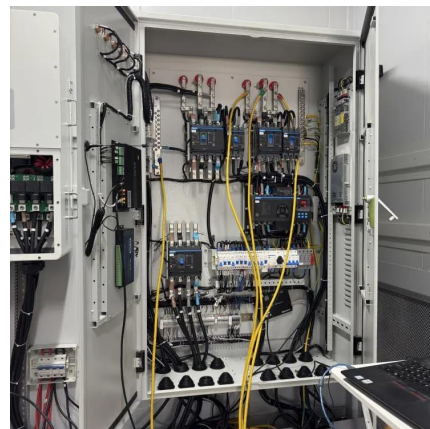
Electricity requirements for industrial real estate can vary significantly, especially given the function of the property. A large car manufacturing plant would likely have a greater ...

[WhatsApp](#)

Power in Commercial Buildings

Used primarily in industrial facilities to provide power for three-phase motor loads, and in utility power distribution applications. Nominal service voltages of 240, 400, 480, 600, and higher are ...

[WhatsApp](#)



How Much Electricity Does a Small Factory Use? A Comparative ...

This article aims to shed light on the power requirements of small factories, warehouses, and businesses, with a particular focus on the contexts of the United Kingdom and the United States.

[WhatsApp](#)



[How Many Watts Does Landscape Lighting Use? \(Power ...](#)

How Many Watts is Landscape Lighting? The average landscape lighting system uses between 20 and 100 watts. This is the overall power consumption for most domestic systems. An ...

[WhatsApp](#)



Outdoor Power Stations for Charging Applications , KH Industries

Outdoor cord reel power stations have emerged as a versatile and practical solution as an industrial power supply for various commercial and industrial charging applications.

[WhatsApp](#)



Contact Us

For catalog requests, pricing, or partnerships, please visit:
<https://www.straightta.co.za>