

How many hours does a 60v inverter usually last





Overview

Our batteries store power in DC (Current current) but most of our household appliances require AC (Alternating current) Our batteries come in different voltages (12,24, & 48v) But AC appliances required 120 volts (because our grid power comes in 120 volts). So an.

There are a few points to keep in mind before getting into calculation stuff, Which are the basics and you need to know.

The next question which comes to mind that how long my inverter will last on load with a 12, 24, or 48v battery. To understand this first of all we need to know 1. What size battery is connected 2. Its type 3. total output load in watts

A rule of thumb is that the total output load should be less than the inverter capacity. For example,if you have a 3000-watt inverter you can run up to 2500 watts of output load with it. As I have mentioned earlier you have to keep in mind the efficiency rate of your.

To calculate how long will an inverter last on a battery using this formula
Battery capacity in watts - 15% (for 85 efficient inverters) / Output total load =
Battery backup time on inverter let's assume that you have a 12v 100Ah lithium battery connected with a.

An inverter battery typically lasts 5 to 10 hours when fully charged. The backup time varies based on power consumption, total load power, and battery capacity. For optimal duration, ensure that your battery is well-maintained and used efficiently.How long does a 24V inverter last?

An inverter draws its power from the battery so the battery capacity and power load determines how long the inverter will last. Regardless of the size, the calculation steps are always the same. Using this calculation, a 24V inverter with a 100ah battery and 93% efficiency can run a 500W load for 2.3 hours.

How long can an inverter supply power?

The duration it can supply power depends on three key factors: Battery



Capacity (Ah): The amount of energy stored in the battery. Inverter Efficiency (%): How effectively the inverter converts DC to AC power. Load Power (W): The total wattage consumed by connected devices. This knowledge is crucial for:.

Does an inverter use time?

Inverter Usage Time Calculator - Yes! Calculator Understanding how long your inverter will last is essential for efficient energy management and backup power planning. This guide explores the science behind inverter usage time, providing practical formulas and expert tips to help you maximize your system's performance.

How long can a refrigerator inverter run out of power?

Practical Impact: The inverter can support your home for nearly 3 hours during a power outage. Scenario: Running a 150 W refrigerator with a 100 Ah battery and 80% efficient inverter. Practical Impact: You'll need multiple cycles or additional solar panels to sustain longer operation. Q1: What happens if my inverter runs out of power?

.

How long can a 24V inverter run a 500W load?

Using this calculation, a 24V inverter with a 100ah battery and 93% efficiency can run a 500W load for 2.3 hours. You have a 24V inverter with a 150ah deep cycle battery. The inverter is 93% efficient. You want to run a 700 watt load, so how long can the inverter run this?

The inverter can run a 700 watt load for 2.4 hours.

How long will a 100Ah lithium battery last on a 500W inverter?

let's assume that you have a 12v 100Ah lithium battery connected with a 500W inverter running at it's full capacity and the inverter is 85% efficient So a 100Ah lithium battery will last 2 hours on a 500W inverter Load Connected with inverter?

Yes No Failed to calculate field.



How many hours does a 60v inverter usually last



[How Long Does It Take to Charge a 60V Lithium Battery?](#)

Charging a 60V lithium battery typically takes between 4 to 8 hours, depending on various factors such as the charger used, battery capacity, and current state of charge. ...

[WhatsApp](#)

Inverter Battery: How Many Hours Does It Last During Power ...

An inverter battery typically lasts 5 to 10 hours when fully charged. The backup time varies based on power consumption, total load power, and battery capacity. For optimal ...

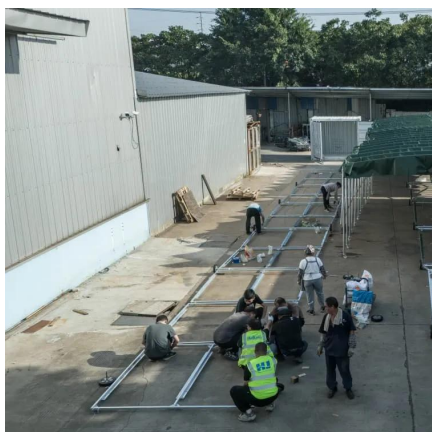
[WhatsApp](#)



[How many hours does an inverter battery last](#)

How many hours is a 200Ah battery backup? Therefore, $200 \times 12 / 350 = 6.8$ hours (Approx.) Finally, 6.8 hours is your inverter's battery backup. In simple words, your battery will last 6.8 hours ...

[WhatsApp](#)



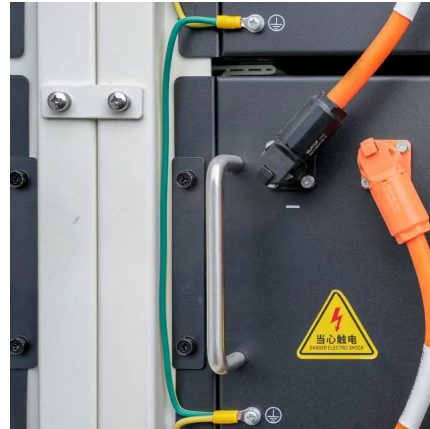
[How long can I run the power inverter on my battery?](#)

How long can I run the power inverter on my battery? Tip: Deep cycle (marine) batteries generally have the highest reserve ratings. They



are also capable of withstanding repeated drains of ...

[WhatsApp](#)



Understanding Battery Capacity and Inverter Compatibility

How Long Can a 100 Ah Battery Run a 1000W Inverter? To estimate how long a battery can run an inverter, we need to consider the power draw and the battery's capacity. ...

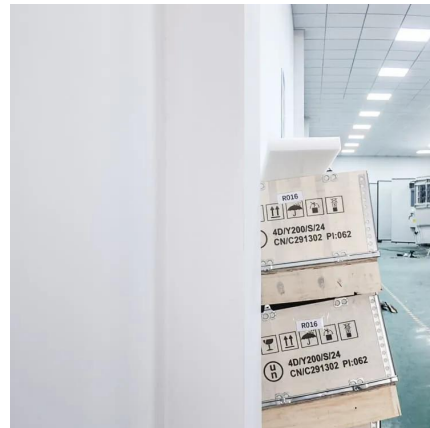
[WhatsApp](#)



[How Long Inverter Last: Everything You Need to Know](#)

This depends on several factors, including battery capacity, power consumption, and inverter efficiency. In this guide, we'll explore the key elements that determine inverter ...

[WhatsApp](#)



[Complete Guide to Inverter Batteries - NPP POWER](#)

Inverter Battery Inverter battery usually comprises a battery bank and an inverter but may lack a built-in charger. It converts DC power from the batteries into AC power for ...

[WhatsApp](#)



How Long Will My Inverter System Last in a Day? Here's What ...

For example, a home with energy-efficient appliances and mindful usage habits (turning off devices when not in use, using power during off-peak hours) will get more hours ...

[WhatsApp](#)



How Long Does a 60V Inverter Battery Last Key Factors Tips

Wondering how long your 60V inverter battery can power your devices? The runtime depends on capacity, load, and usage patterns. This guide breaks down real-world scenarios and ...

[WhatsApp](#)

[Inverter For Home With Battery 24 Hours Backup](#)

Therefore, with a load of 500W, the 2kVA will last for 0.75168 hours (approximately 45 minutes). How many hours does a 200ah battery last? If you have a 200ah battery, it can supply 20 ...

[WhatsApp](#)



Battery Runtime Calculator , How Long Can A Battery Last

Using an inverter reduces the effective runtime due to efficiency loss. Higher battery capacity and voltage lead to longer runtime, but this also depends on the state of ...

[WhatsApp](#)



How Long Do Generators Last? Everything You Need to Know

How Long Do Generators Last, Usually?
Generator technology is better today than ever before, and units of all shapes, sizes, and capacities are running for much longer than they ever did in ...

[WhatsApp](#)



What Will An Inverter Run & For How Long? (With Calculator)

So I'm gonna explain to you guys in simple words about what you can run on your any size inverter and what are the key point to keep in mind. And also how long your inverter ...

[WhatsApp](#)

[Calculate Battery Size for Inverter Calculator](#)

The Calculate Battery Size for Inverter Calculator helps you determine the optimal battery capacity needed to support your inverter system. By inputting critical parameters such ...

[WhatsApp](#)





Contact Us

For catalog requests, pricing, or partnerships, please visit:
<https://www.straighta.co.za>