

How many batteries can a 100ah inverter use





Overview

The number of batteries you can connect to an inverter cannot be more than 12 times the inverter charging current. A 20A charger can handle 240ah battery maximum. The formula is $A \times 12 = \text{battery capacity (ah)}$. If it is a 40A charger the limit is 480ah. Does a 100Ah battery need a 12V inverter?

A 100Ah battery typically operates at 12 volts (V), so you need a 12V inverter. Using an inverter with the correct input voltage ensures compatibility and prevents damage to both the battery and inverter. Inverters provide different types of output waveforms: pure sine wave, modified sine wave, and square wave.

What does a 100Ah battery mean?

A 100Ah battery signifies its capacity to deliver 100 ampere-hours of current. This capacity influences how long an inverter can run appliances before needing a recharge. However, battery capacity alone doesn't dictate inverter size. The inverter converts DC power from the battery into AC power, which is required by most household appliances.

How do I match my inverter with a 100Ah battery?

To match your inverter with a 100Ah battery, several factors must be considered. Inverters are rated based on continuous power and surge power. Continuous power is the amount of power the inverter can supply continuously without overheating or damage. Surge power refers to the short-term power needed to start appliances with high startup currents.

How many batteries can a solar inverter charge?

This applies to all types of solar inverters regardless of size. The number of batteries you can connect to an inverter cannot be more than 12 times the inverter charging current. A 20A charger can handle 240ah battery maximum. The formula is $A \times 12 = \text{battery capacity (ah)}$. If it is a 40A charger the limit is 480ah.

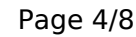


Does battery capacity dictate inverter size?

However, battery capacity alone doesn't dictate inverter size. The inverter converts DC power from the battery into AC power, which is required by most household appliances. To match your inverter with a 100Ah battery, several factors must be considered. Inverters are rated based on continuous power and surge power.

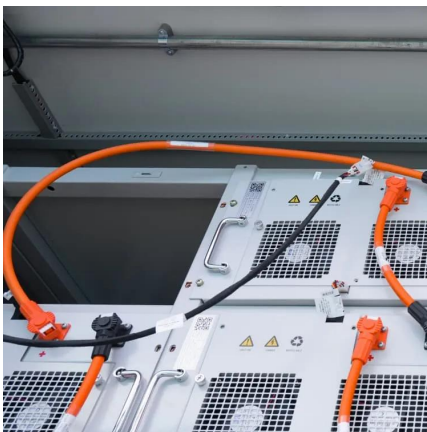
How many batteries can a 36V inverter charge?

If there are three 12V 200ah batteries, the battery voltage is 36V ($12V \times 3 = 36$). An inverter with a 36V can recharge these batteries. The maximum capacity is 600ah ($200 \times 3 = 600$). Battery Parallel Connection. If the battery bank is connected in parallel, the battery bank capacity increases but the battery voltage is the same as each cell.



Understanding how long a 12V LiFePO4 battery can power your devices through an inverter depends on three key factors: battery capacity, inverter efficiency, and appliance ...

The right combination ensures efficiency, longevity, and optimal performance. This detailed guide will help you navigate through the decision-making process to determine the ...



This knowledge forms the foundation for making informed decisions about battery capacity and power requirements. In this article, we will explore how to calculate watt-hours ...

Lead-acid batteries: Can be safely discharged to 50%, which means only 600 watt-hours can be used. Lithium batteries: Can be discharged to



90-95% and can be used for 1080 ...

[WhatsApp](#)



[How Many Batteries for 4000 Watt Inverter - MWXNE POWER](#)

MWXNE believes that when you build an inverter system, there is a question that you will definitely consider, that is, how many batteries should I equip the inverter with? ...

[WhatsApp](#)



What size inverter can I run off a 100Ah lithium battery?

Inverter sizing hinges on battery voltage and load requirements. A 12V 100Ah LiFePO4 battery stores 1.2kWh ($12V \times 100Ah$), but usable energy is $\sim 1.08kWh$ after 90% ...

[WhatsApp](#)



What Size Inverter Can I Run Off a 100Ah Lithium Battery?

When considering the power requirements for a system using a 100Ah lithium battery, it's essential to determine the appropriate size of the inverter. The inverter you choose will directly ...

[WhatsApp](#)

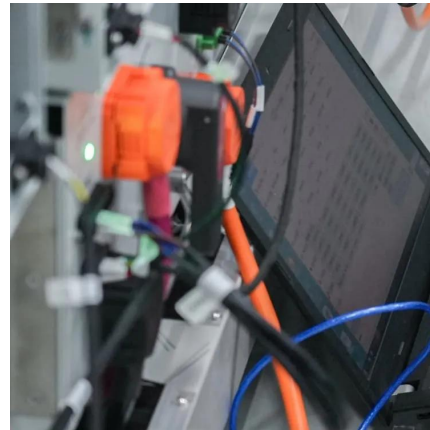




How Long Will a 100AH Battery Run an Appliance That Requires ...

A 12V 100ah battery can run a 100W appliance for 20 hours at a draw of 5 amps/hour. Due to inverter inefficiency and energy losses, drawing more than 5 amps an hour reduces the ah ...

[WhatsApp](#)



How Many Batteries can Be Connected To An Inverter?

The number of batteries you can connect to an inverter cannot be more than 12 times the inverter charging current. A 20A charger can handle 240ah battery maximum. The formula is $A \times 12 = \dots$

[WhatsApp](#)

How Many Batteries Do I Need For A 2000 Watt Inverter?

In summary, for an inverter 2000 watt 12 volt, we recommend selecting a 12V battery with a capacity of at least 100Ah and choosing the appropriate battery type, based on your ...

[WhatsApp](#)



What is the max inverter size I can use with a 100Ah lithium battery?

When using a 100Ah lithium battery, choosing the right inverter size is key to ensuring efficient and reliable power for your setup, whether it's for off-grid living, RVs, or solar ...

[WhatsApp](#)



[What Size Inverter for 100Ah Battery? - MWXNE POWER](#)

In this guide, we'll walk you through what size inverter works best with a 100Ah battery, how long your battery will last, and how to size your inverter-and-battery combo for ...

[WhatsApp](#)



[What size inverter do you need for a 100ah battery?](#)

Determine the power rating of each appliance. Determine the highest power usage you suspect the inverter will have to offset. Once you know what your appliances are, you'll ...

[WhatsApp](#)



[What Size Battery Do I Need to Run a 2000W Inverter?](#)

To run a 2000W inverter, you need to consider the appropriate battery size to ensure optimal performance and efficiency. Generally, for a 2000W inverter, a battery capacity of at least ...

[WhatsApp](#)





What Size Inverter Can I Run Off a 100Ah Battery? Maximize ...

What Types of Inverters Can Be Used with a 100Ah Battery? The types of inverters that can be used with a 100Ah battery include various configurations based on the ...

[WhatsApp](#)

How to Determine What Size Inverter You Can Run Off a 100Ah Battery

Determining the appropriate size of an inverter that can be run off a 100Ah battery involves understanding both the power output of the inverter and the energy capacity of the battery. A ...

[WhatsApp](#)



[What Size Inverter Can I Run Off a 100Ah Battery? A...](#)

The right combination ensures efficiency, longevity, and optimal performance. This detailed guide will help you navigate through the decision-making process to determine the ...

[WhatsApp](#)



Contact Us

For catalog requests, pricing, or partnerships, please visit:
<https://www.straighta.co.za>