

# **How many ah does the energy storage battery use**





## Overview

---

What is battery capacity?

Battery capacity tells you how much energy a battery can store and deliver over time. It's usually expressed in: To calculate how much energy a battery holds in watt-hours, use: If your battery capacity is in mAh (milliamps), convert it to Ah first: You have a 12V battery rated at 100Ah. So it stores 1200 watt-hours of energy.

How much energy does a battery hold?

To calculate how much energy a battery holds in watt-hours, use: If your battery capacity is in mAh (milliamps), convert it to Ah first: You have a 12V battery rated at 100Ah. So it stores 1200 watt-hours of energy. If you're powering a 100-watt device:.

What are Ah ratings in lithium batteries?

Lithium batteries are rated in ampere-hours (Ah), which indicates their capacity to store energy over time. Understanding these ratings is crucial for optimizing battery performance and longevity, especially in applications requiring long-term energy storage.

What does a higher Ah battery mean?

Essentially, amp-hours show you how long the battery will last under a specific electrical load. A higher Ah battery will be able to supply your home with power for longer. Remember that a battery's amp hour rating only tells you part of the story. To understand the full picture of battery capacity, you'll need to consider volts as well.

How many amps can a 10 Ah battery provide?

For instance, a battery rated at 10 Ah can theoretically provide 10 amps for one hour or 1 amp for ten hours before being depleted. This metric is critical for determining how long a battery can power devices before needing a



recharge. Chart: Understanding Ampere-Hour Ratings How Do Ah Ratings Influence Battery Performance?

.

How long can a 20 hr battery last?

The 20 hours is so the standard most battery labels don't incorporate this data. The Amp Hour rating would mean, for example, that if a battery has a rating of 100AH @ 20 Hr rate, it can be discharged over 20 hours with a 5 amp load. If it has the rating of 200 AH, it can handle a 10 amp load for 20 hours.



## How many ah does the energy storage battery use

---



### How to Calculate Battery Capacity (Ah, mAh, and Watt-hours)

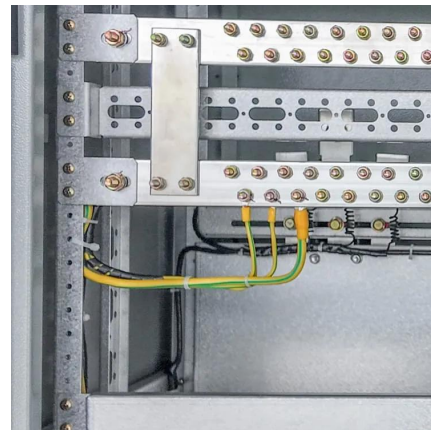
This guide will explain what battery capacity means, how to calculate it, and how to convert between units like Ah, mAh, and Wh -- with a calculator to make it all easy.

[WhatsApp](#)

### How many ah batteries are required for solar energy , NenPower

In the realm of solar energy systems, determining the number of ampere-hour (Ah) batteries required is crucial for the effective storage and utilization of renewable energy. 1. ...

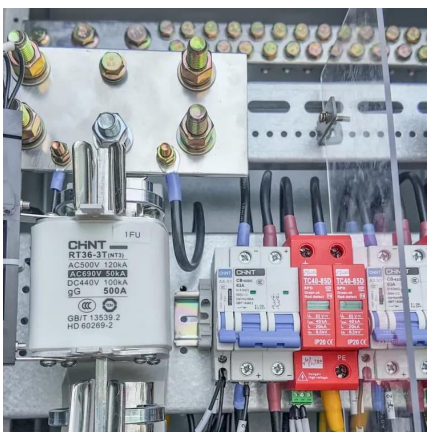
[WhatsApp](#)



### [How many ah is the energy storage battery . NenPower](#)

The value of Ah indicates the battery's energy reservoir relative to the load's operational duration, making it crucial in applications ranging from consumer electronics to ...

[WhatsApp](#)



### Solar Battery Capacity: What Are Amp Hours (Ah) and Why Do ...

Amp-Hours (Ah) measure a battery's charge capacity, showing how much current it can deliver over time, critical for calculating runtime





in solar systems. Watt-Hours (Wh) or Kilowatt-Hours ...

[WhatsApp](#)



### How many ah does the energy storage battery use , NenPower

When considering how many ampere-hours an energy storage battery utilizes, various factors influence the appropriate Ah rating for particular situations. The specific ...

[WhatsApp](#)



### [The Complete Guide to Battery Capacity - Hinen](#)

Battery capacity is the amount of energy a battery can store, typically measured in ampere-hours (Ah) or watt-hours (Wh). Ampere-hours indicate the total charge a battery can ...

[WhatsApp](#)



### Understanding Energy Storage: Power Capacity vs. Energy ...

Discover the key differences between power and energy capacity, the relationship between Ah and Wh, and the distinctions between kVA and kW in energy storage systems.

[WhatsApp](#)





### [220 amp hour batteries explained , Renogy US](#)

What to know about deep cycle batteries and amp hours Adding battery storage to your solar installation is a great way to take full advantage of the benefits of renewable energy to ...

[WhatsApp](#)



### **Understanding Energy Storage: Power Capacity vs. Energy Capacity, Ah ...**

Discover the key differences between power and energy capacity, the relationship between Ah and Wh, and the distinctions between kVA and kW in energy storage systems.

[WhatsApp](#)



### **Understanding Battery Capacity and Inverter Compatibility**

For a 200 Ah battery, the calculation depends on the battery's voltage. Assuming a 12V battery:  
 $Wh = 200 \text{ Ah} \times 12 \text{ V} = 2400 \text{ Wh}$   
Thus, a 200 Ah battery at 12 volts has a capacity of ...

[WhatsApp](#)



### **Battery pack calculator : Capacity, C-rating, ampere, charge and**

The capacity of a battery or accumulator is the amount of energy stored according to specific temperature, charge and discharge current value and time of charge or discharge.

[WhatsApp](#)



### [Amp-Hours Explained: Your Battery Capacity Guide](#)

In this blog, we break down key solar battery specifications like volts, amps, and watts, explain what amp-hours are, how they compare to kilowatt-hours, and other essential ...

[WhatsApp](#)



## Contact Us

---

For catalog requests, pricing, or partnerships, please visit:  
<https://www.straighta.co.za>