

How many PV panels use a 48v inverter





Overview

How many solar panels can a string inverter hold?

Most string inverters have 3 inputs that can hold 8 panels each for 24 in total. The specifications will vary so make sure to check the inverter before connecting any solar panel. Generally, an inverter can handle up to 30% more power than its rating. Given that solar panels do not always produce at peak power, this should not be an issue.

How does a solar inverter work?

Connecting solar panels to an inverter is a crucial step in any solar power system. The inverter converts the direct current (DC) generated by solar panels into alternating current (AC), which can then be used to power homes or businesses. This conversion process is essential for integrating solar energy into everyday electrical usage.

What is the maximum input voltage of a solar panel inverter?

The maximum input voltage of a solar panel inverter determines how you should set up your solar panels. Here's an example: If an inverter has a maximum input voltage of 600V and each panel produces 40V, you could connect up to 15 panels in series ($15 \times 40V = 600V$).

How many solar panels can a 600V inverter connect?

If an inverter has a maximum input voltage of 600V and each panel produces 40V, you could connect up to 15 panels in series ($15 \times 40V = 600V$). Going over this voltage limit can harm the inverter or make it shut down, making your solar system less effective or even unusable. Equally important is the minimum input voltage.

How much solar power can a 4000 watt inverter have?

A solar array can be up to 130% of the inverter capacity. So if you have a 4000 watt inverter you can install a 5200 watt solar power system. With a 5kw



inverter, you can have up to 6.5 kw of solar power. There are many ways to calculate inverter sizes, but we will stick to the simplest methods.

How do you connect solar panels to an inverter?

When connecting solar panels to an inverter, understanding the wiring configurations is crucial. The two primary methods are series connections and parallel connections. Each method has distinct impacts on the electrical characteristics of the system. In a series connection:



How many PV panels use a 48v inverter



[How Many Solar Panels Do I Need For A 48V Inverter?](#)

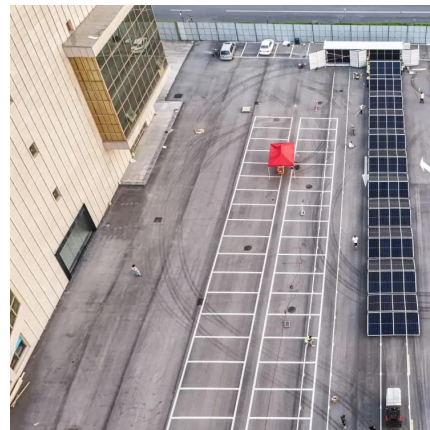
To calculate the number of solar panels you need for a 48V inverter, you have to consider several factors. Lets say, your household power requirement is 2 kW per hour, and you have about 5 ...

[WhatsApp](#)

How many volts are suitable for solar photovoltaic panels?

Residential systems often utilize inverters to convert the direct current generated by solar panels into alternating current for household use. With increasing innovation in solar ...

[WhatsApp](#)



12V, 24V, or 48V Solar Power System: Which Voltage Is Best for ...

To do this, you need to connect an inverter to the battery bank. It is important to match the battery bank voltage with an inverter that can handle that same voltage. Simply put, if you have a 12V ...

[WhatsApp](#)

[Solar System Sizing Tool & Calculator](#)

Easy to use solar sizing calculator for entry level solar systems. Input monthly electricity cost, electricity consumption or input detailed electricity usage. The calculator can be used to



...

[WhatsApp](#)



What size of cable should I use with my inverter and battery

Maximum current through the cable = Rated power of the inverter / Rated voltage of the solar cells
If the power of the inverter in your solar system is 5000W, and the rated ...

[WhatsApp](#)



How Many MPPT or Solar Power can be used after a Multiplus II ...

48V Battery (3x 3,5kWh Pylontec) and now 3 MPPT with 1kW, 2kW and yet extra 2kW solar power peak. As the mutliplus can roughly transport 2kVA to the grid, the CERBO ...

[WhatsApp](#)



pv voltage for 48v inverter -- northernarizona-windandsun

Back again after a while. For a 48v inverter if the panels are 36 v how many should I use? Or how can I match panels to a 48v inverter? I see big 315w panel giving about 36v, should I look for ...

[WhatsApp](#)





How Many Solar Panels, Batteries & Inverter Do I Need for Home?

Below is a DIY (do it yourself) complete note on Solar Panel design installation, calculation about No of solar panels, batteries rating / backup time, inverter/UPS rating, load ...

[WhatsApp](#)



[Solar Load Calculator , How-many-solar-panels-do-i-need](#)

This free tool calculates your total energy usage and recommends the exact number of PV panels, inverter size in kW, and battery requirements. Just enter your appliance wattage and ...

[WhatsApp](#)



How Many Solar Panels Can I Connect to an Inverter? A ...

This guide will discuss the factors that determine how many solar panels can be connected to an inverter, such as inverter specifications, wiring configurations, and the use of charge controllers.

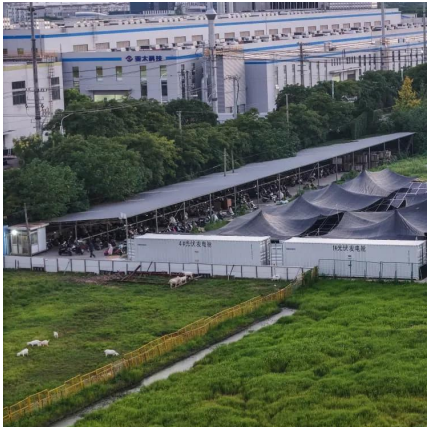
[WhatsApp](#)



[Beginner's Guide: Sizing Your Solar System. Renogy US](#)

Learn how to accurately size your solar system with this comprehensive guide. Determine the panels, batteries, controller, and inverter required for your setup. Calculate load sizing, solar ...

[WhatsApp](#)



[How many panels can I wire in series for 48V system](#)

I'm a bit confused about how many panels I can wire in series. I'm assuming that I can wire four 12V panels in series (to get 48V), but I wonder what happens if I exceed 48V. ...

[WhatsApp](#)



How Many Solar Panels for Solar Inverter 48V , GRANKIA Electric

In this example, you would need 100 solar panels to produce enough power to meet your daily energy requirements. However, this is a simplified calculation, and there are ...

[WhatsApp](#)



Contact Us

For catalog requests, pricing, or partnerships, please visit:
<https://www.straighta.co.za>