

How many 12v lithium battery packs are there in 8 series





Overview

How many cells are in a 12V battery pack?

Some packs may include additional cells for higher energy capacity or specific voltage requirements, but the standard configuration for a 12V battery is four cells. For example, a small electric vehicle or a solar power storage system commonly uses a 12V lithium battery pack with four cells.

How many lithium batteries can be connected in series?

For instance, LiTime allows for a maximum of four 12V lithium batteries to be connected in series, resulting in a 48-volt system. It's always important to consult the battery manufacturer to ensure that you stay within their recommended limits for series connections.

What is a 12V lithium battery pack?

Most commonly, a 12V lithium battery pack is made up of four lithium-ion cells, each with a nominal voltage of 3.7V. This configuration allows the pack to reach a total nominal voltage of approximately 14.8V when fully charged and around 12V when discharged.

How many cells are in a lithium ion battery?

Lithium batteries use multiple cells. For example, a lithium-ion battery has 3 cells for 11.1 volts, 4 cells for 14.8 volts, or 10 cells for 37 volts. Cells can be arranged in series to increase voltage or in parallel to boost capacity measured in amp-hours (Ah). This setup meets different energy storage needs.

How many lithium batteries should a solar array have?

It's wise to only series-connect up to four lithium batteries to make 48 volts, to prevent damage. In parallel, batteries share the same voltage. This practice ups amp hours without changing the voltage, which goes up to eight batteries for solar arrays. Series setups make batteries last longer than in parallel.



How many lithium cells are needed for 48 volts?

If a typical lithium cell operates at 3.7 volts, then for 48 volts, you would need $48V / 3.7V =$ approximately 13 cells in series. Assess capacity requirements: The capacity of cells is measured in ampere-hours (Ah). For a device that requires 16 Ah, you need to consider the capacity of the chosen cells.



How many 12v lithium battery packs are there in 8 series



LiFePO4 Lithium Batteries in Series VS Parallel Connection

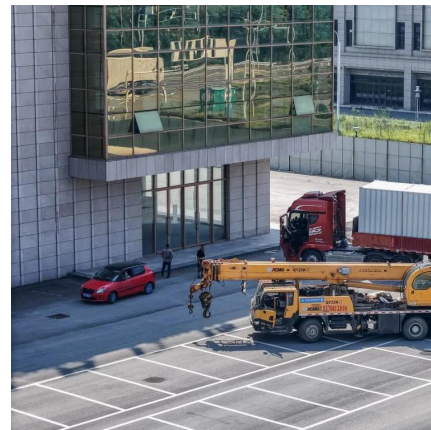
For instance, connecting four 12.8V batteries in series results in a total voltage of 51.2V. More Efficient Energy Storage: In a series-connected battery pack, each cell shares the ...

[WhatsApp](#)

5 Best 12 Volt Lithium RV Batteries Reviewed + How To Charge

Many 12 volt lithium-ion batteries can be wired in parallel to increase amp hours if you need more stored power. This article will review the best 12-volt lithium batteries for RVs ...

[WhatsApp](#)



[Lithium Series, Parallel and Series and Parallel](#)

To Series, Parallel, or Series and Parallel lithium batteries with a BMS you must first understand what a "true" BMS is, what it does, and what challenges the BMS in your battery may present ...

[WhatsApp](#)



How Many Cells In A Lithium Battery Pack? A Complete Guide To 12V ...

In summary, a standard 12V lithium battery pack typically consists of four cells in series. However, specific designs may vary based on performance



needs and battery chemistry.

[WhatsApp](#)



Helpful Guide to Lithium Batteries in Parallel and Series

So how to calculate how many series and parallels a lithium battery pack consists of, and how many cells it consists of? Before calculation, we need to know the specifications of ...

[WhatsApp](#)



[BU-302: Series and Parallel Battery Configurations](#)

Figure 2 shows a battery pack with four 3.6V Li-ion cells in series, also known as 4S, to produce 14.4V nominal. In comparison, a six-cell lead acid string with 2V/cell will generate 12V, and ...

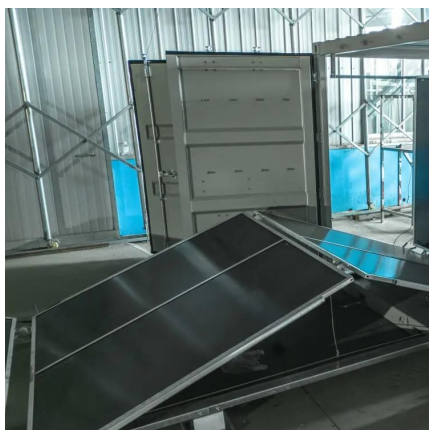
[WhatsApp](#)



Compare 8S2P, 16S2P, 96S2P Battery Packs: Which to Choose?

3 days ago · For high voltage battery or custom energy storage systems (e.g., 96S2P, 48S3P), work with a professional lithium battery manufacturer who can customize the solution to your ...

[WhatsApp](#)





How to Calculate the Number of Lithium Batteries in Series or

The capacity varies depending on the cell size, material, and manufacturer. Due to the limited voltage and capacity of single batteries, series and parallel combinations are required in actual ...

[WhatsApp](#)



How To Wire Lithium Batteries In Parallel Increase Amperage

In this article, we will explain why you would want to wire lithium-ion batteries in parallel, how you wire them in series and how to charge battery cells while in series.

[WhatsApp](#)

Lithium Battery Series & Parallel Operation , Fact Sheets

It is always preferred to use a single 26.4 volt battery versus two 13.2 volt batteries in series, for the single battery can internally monitor each of the 8 cells in series and ensure the charge ...

[WhatsApp](#)



How Many Cells Are In A 12V LiFePO4 Battery Pack? A Guide To

How Many Cells Are Typically Found in a 12V LiFePO4 Battery Pack? A typical 12V LiFePO4 (Lithium Iron Phosphate) battery pack usually consists of 4 cells in series. Each ...

[WhatsApp](#)



How Many Cells In A Lithium Battery Pack? A Complete Guide ...

In summary, a standard 12V lithium battery pack typically consists of four cells in series. However, specific designs may vary based on performance needs and battery chemistry.

[WhatsApp](#)



Contact Us

For catalog requests, pricing, or partnerships, please visit:
<https://www.straighta.co.za>