

How long is the life of a base station power supply





Overview

Quality power supplies from established manufacturers can easily reach 8-10 years of reliable service, while budget units may start showing problems after just 3-5 years. The key difference lies in the internal components and design philosophy. How can a power supply extend the lifespan of a PSU?

By maintaining an optimal load and power consumption, users can maximize the lifespan and reliability of their PSU. Proper ventilation and cooling play a vital role in extending the lifespan of a Power Supply Unit (PSU).

How long does a power supply last?

Power supplies tend to be rated in “hours,” so it goes without saying that those used continuously will have a shorter lifespan than those that are used only occasionally. PSUs for high-powered devices, such as servers or computer systems, will likely have a shorter lifespan than those used to power smaller devices given the higher load.

Do power supplies have a shorter lifespan?

You get what you pay for. Power supplies used in harsh environments with high temperatures or humidity will likely have a shorter lifespan than those used in more controlled conditions. The same is true of power supplies used in high-vibration environments, such as vehicles or heavy machinery.

How to maintain a power supply unit (PSU)?

Regular maintenance and proper care can significantly extend the lifespan of a power supply unit (PSU). Here are some essential steps to keep your PSU in excellent condition: 1. Dust and debris removal: Over time, dust particles can accumulate inside the PSU, obstructing airflow and increasing temperatures.

What is the life expectancy of a power supply?

No general answer can be given. Well, the power supplies' heating is usually much higher at 90% than at 80% and extremely high at 100%. So considering



heating, it's usually good not to put more than 80% load on the supply for longer periods. Life expectancy is not really equal to MTBF!.

How long does a CPE power supply last?

The typical lifetime expectation for a CPE power supply is between 5 or 10 years and many operators require that power supplies are designed to follow the IPC9592B standard which sets out two performance levels: Class I – 5 years life with 40C ambient, 80% of rated load – applies to general or standard, e.g. consumer Telco applications.



How long is the life of a base station power supply



How many strings of batteries are best for base station power supply

About How many strings of batteries are best for base station power supply With the rapid advancement in the solar energy sector, the demand for efficient energy storage systems has ...

[WhatsApp](#)

What is the Lifespan of a PSU: Understanding the Lifespan of a Power

The power supply unit (PSU) is a vital component of any electronic device, responsible for providing a steady flow of power to ensure its proper functioning. However, like ...

[WhatsApp](#)



The Lifespan of PC Power Supplies: How Long Do They Last?

While the lifespan of a power supply varies based on several factors, there's a general timeframe you can expect. Most power supplies in personal computers have a lifespan ...

[WhatsApp](#)

[Telecom Base Station Power Backup Solution ...](#)

Telecom base station battery backup system is a comprehensive portfolio of energy storage batteries used as backup power for base stations to ensure a reliable and stable power supply. ...



[WhatsApp](#)



[Base station 2.0 replacement power cable? : r/ValveIndex](#)

I've been waiting for valve to replace my base station power cable for three months, and they won't recommend a 3rd party option. Has anyone had to use a 3rd party power supply for their ...

[WhatsApp](#)



Cradle to the Grave: Sustainability and the Life of a Base Station

A base station spends its working life providing broadband connectivity to consumers and businesses, and unsurprisingly this accounts for the vast majority (93%) of ...

[WhatsApp](#)



Understanding the Lifespan of Your PSU: How Long Do They ...

Typically, a power supply unit (PSU) lasts between five to ten years, depending on various factors such as usage patterns and build quality. A well-maintained PSU can surpass ...

[WhatsApp](#)

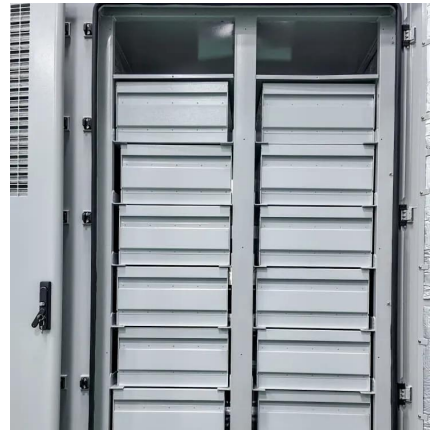




How Long Do Power Supplies Last? , Power Supply Lifespan

It's safe to assume yours will provide anywhere from 2-5 years of reliable usage, but that's a broad spectrum. So let's take a closer look at what impacts PSU lifespan. ...

[WhatsApp](#)



How Long Does a PSU Last? A Closer Look at Power Supply ...

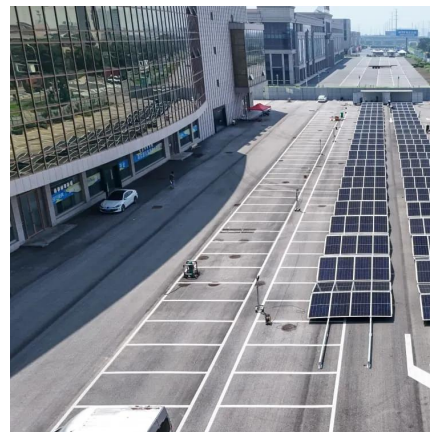
When it comes to choosing a power supply unit (PSU) for your computer, reliability is a crucial factor to consider. The lifespan of a PSU greatly depends on its build quality and ...

[WhatsApp](#)

[How long do power supplies last? A Complete Overview.](#)

A power supply typically lasts between 5 to 10 years, depending on whether it has been sized correctly for your PC, its quality, usage patterns, environmental conditions, and power ...

[WhatsApp](#)



What is the Lifespan of a PSU: Understanding the Lifespan of a ...

The power supply unit (PSU) is a vital component of any electronic device, responsible for providing a steady flow of power to ensure its proper functioning. However, like ...

[WhatsApp](#)



Contact Us

For catalog requests, pricing, or partnerships, please visit:
<https://www.straighta.co.za>