

How long does it take for wind power to generate electricity for a communication base station





Overview

How do windmills produce electricity?

Wind turbines or windmills are incredible machines that convert the kinetic energy of wind and ferry it to electrical energy. The process of generating energy free from wind relies upon the aerodynamic motion of rotor blades to spin generators to produce power. How does windmill electricity work exactly?

.

How do wind turbines produce energy?

Wind turbines can have a horizontal or vertical axis. The turbines do not actually produce wind energy, directly. The blades turn, convert the energy of wind into rotational energy, a form of mechanical energy, and this energy is in turn converted into electrical energy.

How much electricity does a wind turbine produce?

At very high wind speeds, that is gale force winds of 25 metres/second, wind turbines shut down. A modern wind turbine produces electricity 70-85% of the time, but it generates different outputs depending on the wind speed. Over the course of a year, it will typically generate about 24% of the theoretical maximum output (41% offshore).

How do wind turbines convert kinetic energy into electrical energy?

Wind turbines convert the kinetic energy of wind into usable electrical energy through a sophisticated synergy of aerodynamics, mechanical engineering, and principles of electromagnetic induction. As the world moves toward more sustainable energy systems, understanding and improving the efficiency of technologies like wind turbines is paramount.

How many kilowatthours do wind turbines generate a year?

Total annual U.S. electricity generation from wind energy increased from



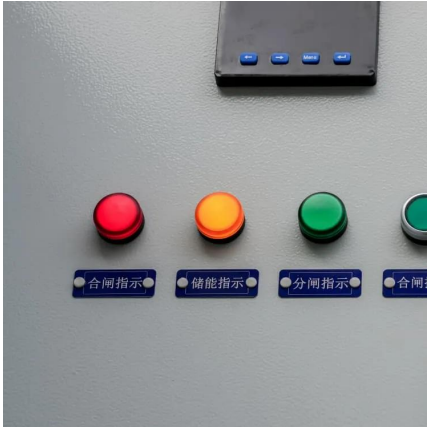
about 6 billion kilowatthours (kWh) in 2000 to about 434 billion kWh in 2022. In 2022, wind turbines were the source of about 10.3% of total U.S. utility-scale electricity generation.

How does a wind to electricity process work?

The wind to electricity process is a sequential transformation of energy: Wind hits the blades, that generates a rotational force through aerodynamic lift. Blades spin the rotor, transferring motion to the shaft. The drivetrain increases rotational speed using a gearbox.



How long does it take for wind power to generate electricity for a c



[Wind energy frequently asked questions \(FAQ\). EWEA](#)

A modern wind turbine produces electricity 70-85% of the time, but it generates different outputs depending on the wind speed. Over the course of a year, it will typically generate about 24% of ...

[WhatsApp](#)

How Much Does a Wind Turbine Cost? Let's Do The Calculations

At this time in 2009 and considering the current costs of turbines, turbine installation, and maintenance, along with the current price of 7.2 ¢/kWh, wind-generated power ...

[WhatsApp](#)



How Do Wind Turbines Generate Electricity? Step-by-Step Guide

Wind turbines or windmills are incredible machines that convert the kinetic energy of wind and ferry it to electrical energy. The process of generating energy free from wind relies upon the ...

[WhatsApp](#)



[Frequently Asked Questions about Wind Energy](#)

Determine your household electricity needs by looking at monthly or yearly electricity usage. Find out whether local zoning ordinances will allow wind turbine installations. Purchase and



install a ...

[WhatsApp](#)



How to make wind solar hybrid systems for telecom stations?

Communication base stations and related equipment require continuous operation 24 hours a day. Only a continuous power supply from the power generation system can effectively ensure ...

[WhatsApp](#)



How Long Does It Take Wind Turbine To Create Electricity

It takes three to six months to produce the amount of energy that goes into its manufacture, installation, operation, and maintenance. The average time to assemble a wind ...

[WhatsApp](#)



HOW IS ELECTRICITY MADE?

o Larger turbines can capture more of the wind's energy and so make more electricity. The picture on the left is of a 660 kilowatt wind turbine. It stands about 64 metres high and has blades that ...

[WhatsApp](#)

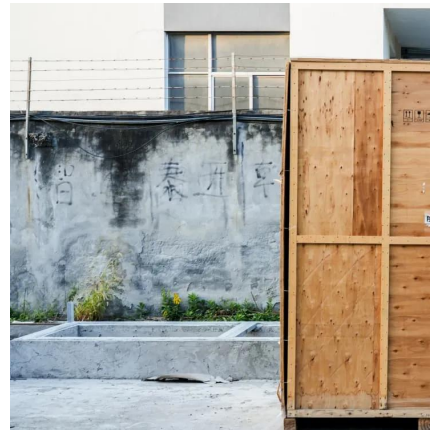




[A Comprehensive Guide to Wind Farm Construction](#)

Wind farm construction involves designing, building, and operationalizing a series of wind turbines to capture wind energy and convert it into electricity. These projects can be ...

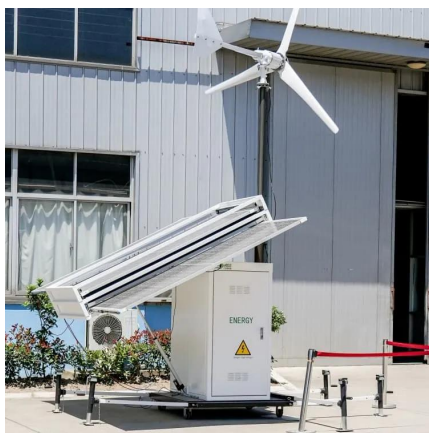
[WhatsApp](#)



How Does a Coal Power Plant Work?

Thermal-based power plants can produce electricity from coal or other fuel sources. The coal-fired process requires three different steps to turn energy released from burning coal to generating ...

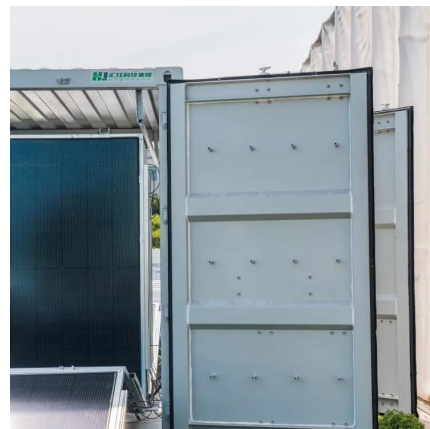
[WhatsApp](#)



How Does a Wind Turbine Generate Electricity? (Best Guide)

The amount of energy a single wind turbine can produce depends on its size, location, and wind speed. Large wind turbines can generate between 1 to 8 megawatts of electricity, enough to ...

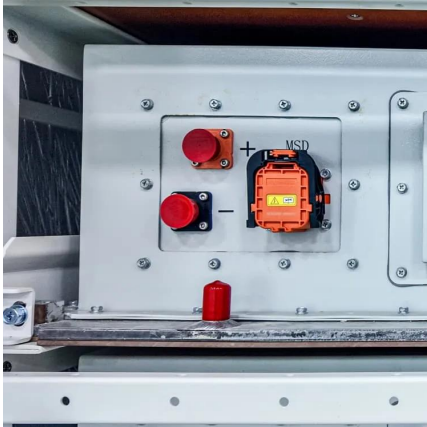
[WhatsApp](#)



[The Most Frequently Asked Questions about Wind Energy](#)

The "energy payback time" is a term used to measure the net energy value of a wind turbine or other power plant--i.e., how long does the plant have to operate to generate the amount of ...

[WhatsApp](#)



[How is electricity generated using wind?](#)

It's a fairly simple process: When the wind blows the turbine's blades spin, capturing energy - this energy is then sent through a gearbox to a generator, which converts it into electricity for the ...

[WhatsApp](#)



[How does a wind turbine generate electricity?](#)

Wind turbines generate electricity by converting the kinetic energy from the wind into electrical energy. Here's how it works: Blades Capture Wind: The wind blows and moves the blades of ...

[WhatsApp](#)

Contact Us

For catalog requests, pricing, or partnerships, please visit:
<https://www.straightta.co.za>