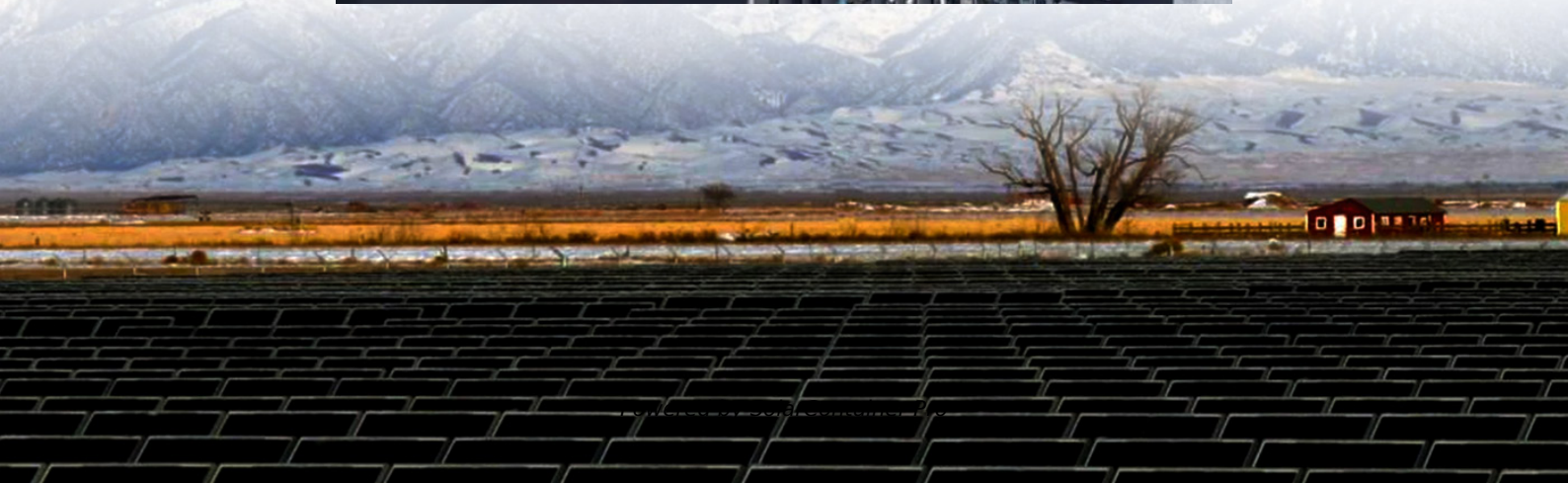


How long does it take for an energy storage station to be fully charged





Overview

What is energy storage duration?

When we talk about energy storage duration, we're referring to the time it takes to charge or discharge a unit at maximum power. Let's break it down: Battery Energy Storage Systems (BESS): Lithium-ion BESS typically have a duration of 1-4 hours. This means they can provide energy services at their maximum power capacity for that timeframe.

How long does a battery energy storage system last?

Let's break it down: Battery Energy Storage Systems (BESS): Lithium-ion BESS typically have a duration of 1-4 hours. This means they can provide energy services at their maximum power capacity for that timeframe. Pumped Hydro Storage: In contrast, technologies like pumped hydro can store energy for up to 10 hours.

Should energy storage systems be recharged after a short duration?

An energy storage system capable of serving long durations could be used for short durations, too. Recharging after a short usage period could ultimately affect the number of full cycles before performance declines. Likewise, keeping a longer-duration system at a full charge may not make sense.

Can energy storage be used for a long duration?

If the grid has a very high load for eight hours and the storage only has a 6-hour duration, the storage system cannot be at full capacity for eight hours. So, its ELCC and its contribution will only be a fraction of its rated power capacity. An energy storage system capable of serving long durations could be used for short durations, too.

What is an energy storage system battery?

Like a common household battery, an energy storage system battery has a "duration" of time that it can sustain its power output at maximum use. The



capacity of the battery is the total amount of energy it holds and can discharge.

How long does a solar energy storage system last?

An SDES with a duration of 4-6 hours in a home may be used to keep the lights on or the refrigerator cold during an outage. On a broader scale, utility-sized SDES systems may be used to replace wind power on a day with no wind. Different battery chemicals affect the energy storage duration achieved.



How long does it take for an energy storage station to be fully charged



How long does it take for the energy storage power supply to ...

How long does it take to charge a power storage wall ... It usually takes about 5 to 10 hours to fully charge a Powerwall battery from empty using regular home electricity supply.

[WhatsApp](#)

How long does it take to charge a power storage wall (powerwall)

It usually takes about 5 to 10 hours to fully charge a Powerwall battery from empty using regular home electricity supply. The exact time can vary based on how much power ...

[WhatsApp](#)



How many hours does it take to fully charge the energy storage?

Understanding the relationship between the capacity of the storage system and the power output from the charging unit can help users predict how long it will take to achieve ...

[WhatsApp](#)

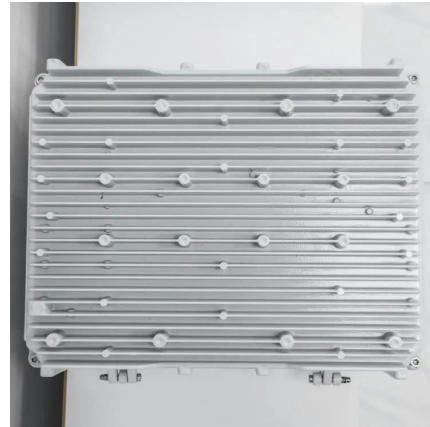
Do I have to occasionally use and recharge a power station if I'm

Do I have to occasionally use and recharge a power station if I'm keeping it in storage? The manual only says to recharge it before it reaches



20% before storing. I can I keep it stored at ...

[WhatsApp](#)



How much electricity does it take to fully charge the energy ...

In determining how much electricity a battery needs to reach a full state, it is essential to take into account the discharge cycle it previously underwent. The repeated cycles ...

[WhatsApp](#)



How Long Does It Take to Charge a Portable Power Station: ...

Charging time for portable power stations varies based on capacity, input power, and charging method. Understanding the specifications and features of your power station can ...

[WhatsApp](#)



Should NiCad Batteries Be Stored Fully Charged? (Answered)

NiCad batteries should not be stored fully charged. Over time, the battery will discharge and become damaged. The best way to store a NiCad battery is in a cool, dry place.

[WhatsApp](#)



Energy storage: It's not just size that counts, but how long it lasts

In the first half of the sample period VRE is mostly exceeding demand, so whatever storage you have is going to fill up (pumped hydro) or be charged (battery) and then what do ...

[WhatsApp](#)



[Energy Storage Systems: Duration and Limitations](#)

True resiliency will ultimately require long-term energy storage solutions. While short-duration energy storage (SDES) systems can discharge energy for up to 10 hours, long ...

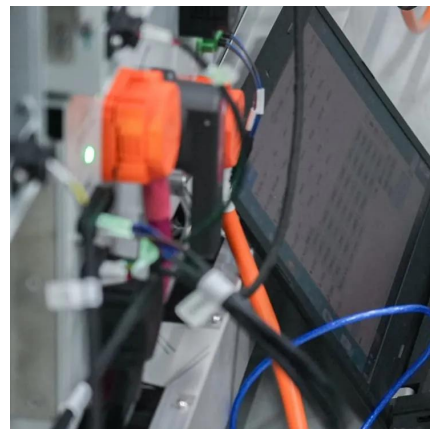
[WhatsApp](#)



The Duration of Battery Energy Storage: All depends on how you ...

How long the battery energy storage systems (BESS) can deliver, however, often depends on how it's being used. A new released by the U.S. Energy Information ...

[WhatsApp](#)



How to store and how often to charge my power station if I don't ...

It is recommended to operate and recharge it if necessary every three months to keep the power station active. Like a car battery, you should warm up the battery every so often to keep it ...

[WhatsApp](#)



[How Long Does a Portable Power Station Stay Charged](#)

It depends on battery type, usage, and storage conditions--but most hold 50-80% charge for 3-12 months when idle. Portable power stations are revolutionizing off-grid energy, ...

[WhatsApp](#)



How should I store the battery when not in use? On or off the ...

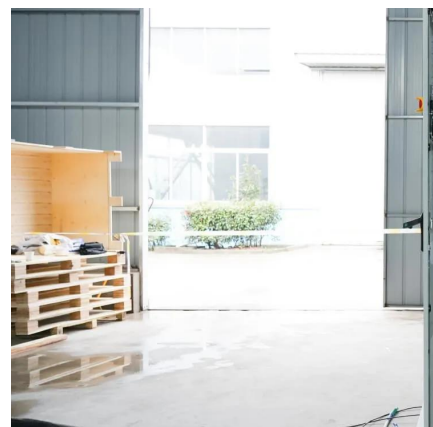
The charger manual (ch2100fc) states: When the battery pack is fully charged, the green LED will stop flashing and will shine green continuously. The power indicator on the battery pack will go ...

[WhatsApp](#)

[How Long Does It Take To Charge A Tesla? \(2022 Update\)](#)

Tesla Batteries 101 Tesla batteries, or Energy Storage Systems, take up a large portion of the vehicle and the vehicle's weight. As Tesla's are fully electric, their batteries reflect that and ...

[WhatsApp](#)





How much electricity does it take to fully charge the energy storage

In determining how much electricity a battery needs to reach a full state, it is essential to take into account the discharge cycle it previously underwent. The repeated cycles ...

[WhatsApp](#)

[How Long Does a Portable Power Station Hold Its Charge?](#)

The answer depends on multiple factors--but typically, modern units retain 70-90% of their charge for 3-12 months when idle. Many assume these devices lose power quickly, but ...

[WhatsApp](#)



Contact Us

For catalog requests, pricing, or partnerships, please visit:
<https://www.straightta.co.za>