

# How long and wide is 1 kilowatt solar panel





## Overview

---

The answer may vary depending on the type and brand of the solar panel, but generally, a 1kW solar panel is around 5.47 feet (1.67 meters) in length and 3.25 feet (0.99 meters) in width. How much does a 1kW solar panel weigh?

The standard dimensions for a residential solar panel are 66×40 inches for the panel, about 1.25×1.6 inches for the frame, and each panel weighs about 40 pounds. 1kW of solar power can typically power a home for a day. Let's dig into it and find out what's going on. What Are The Dimensions Of A 1Kw Solar Panel?

.

What are the dimensions of a solar panel?

For commercial solar panels, the standard dimensions are 1.6m x 1m, 1.9m x 1.3m and 2.2m x 1.6m, with wattage ranging from 300W to 1KW. Solar panels for agricultural use are generally found in wattages ranging from 200W to 500W, with typical dimensions of 1.6m x 1m, 1.6m x 1.2m and 1.9m x 1.3m.

How many kilowatts can a solar panel generate?

A 1 kilowatt (kW) solar panel system can generate up to 4 kilowatt-hours (kWh) of electricity per day. What Are The Solar Panel Dimensions In Cm?

: The average solar panel has dimensions of 165.1 x 99.06 centimeters or 5.41 x 3.25 feet. Most solar panels are rectangular in shape.

How are solar panels measured?

Solar panel sizes are measured in two ways: watt output and physical dimensions. Physical dimensions refer to the height, length and width of the solar array. The wattage refers to how much power the panel can produce. Regular solar panels come in 60 cell panels or 72 cell panels.

What size solar panel do I Need?



Refer to the solar panel size chart below for a comparison of average residential and commercial solar panel dimensions. The average U.S. residential utility customer uses 893 kWh per month. To completely offset this usage, the average American would need a 6.7 kW solar panel system. Most solar panels have an output rating between 250 W and 400 W.

How big is a 400W solar panel?

The area of a 400W solar panel is around 2.2 square metres. It is a slightly larger size than the 300W panel and is suitable for small commercial applications as well as small-scale residential applications. It is a good size for those that need a larger system, but not too big for their rooftop.



## How long and wide is 1 kilowatt solar panel

---



### Understanding Solar Panel Dimensions In 2025: A Complete Size ...

Explore the most common solar panel dimensions in 2025, including residential and commercial sizes. Learn how solar panel size dimensions affect power, installation, and ...

[WhatsApp](#)

### 3kW Solar System: Price, Load Capacity, How Big, and More

A 3kW solar system can lead to significant savings on your electricity bills. On average, this system can save you up to \$931 per year. Over the 25-year lifespan of the solar ...

[WhatsApp](#)



### Solar panel size and weight explained: how big are solar panels?

While residential solar panels tend to be around 5.5 feet long and a little over 3 feet wide for an area of around 15 feet, the dimensions of commercial panels are typically larger at ...

[WhatsApp](#)

### [Standard Solar Panel Sizes And Wattages \(100W-500W ...](#)

The dimensions of 72-cell solar panels are as follows: 77 inches long, and 39 inches wide. That's a 77×39 solar panel; basically, a longer





panel, mostly used for commercial solar systems.

[WhatsApp](#)



### [Solar Panel Size Guide \(with 4 Charts\)](#)

Solar panel sizes are measured in two ways: watt output and physical dimensions. Physical dimensions refer to the height, length and width of the solar array. The wattage refers to how ...

[WhatsApp](#)



### **Size of Standard Solar Panel: Solar Sizing Calculator Finds How ...**

A 1 kW solar system consists of multiple solar panels that make up 1000 watts. The average price for that is \$700 to \$1200, which only covers the cost of the solar panels. Here is ...

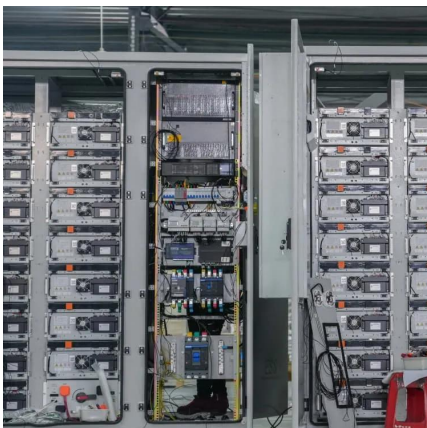
[WhatsApp](#)



### **Solar Panel Dimensions (Size): 300W,400W,1 Kw,How Big It Is?**

Lastly, a 1KW solar panel measures 1.9m x 1.6m and weighs approximately 34kg. For commercial solar panels, the standard dimensions are 1.6m x 1m, 1.9m x 1.3m and 2.2m x 1.6m, with ...

[WhatsApp](#)





### [How Big Is A 1Kw Solar Panel? \[Updated: September 2025\]](#)

The standard dimensions for a residential solar panel are 66×40 inches for the panel, about 1.25×1.6 inches for the frame, and each panel weighs about 40 pounds. 1kW of ...

[WhatsApp](#)



### **How to Estimate Solar System Size - Complete Design Guide**

In the world of clean energy, knowing how to estimate solar system size is the cornerstone of any effective solar power system design. Whether you're a homeowner trying to ...

[WhatsApp](#)



## **Contact Us**

---

For catalog requests, pricing, or partnerships, please visit:  
<https://www.straightta.co.za>