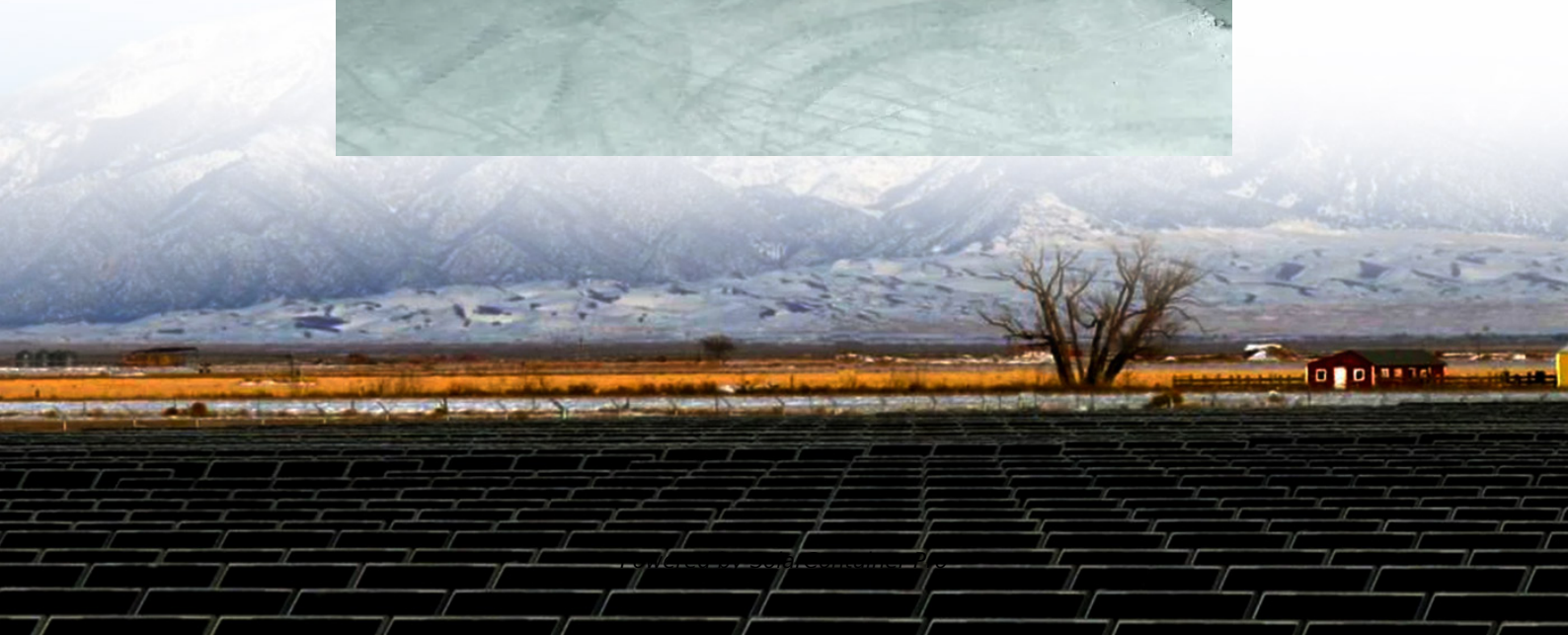


How high should the outdoor power supply in the courtyard be





Overview

Many of the rules applying to outdoor receptacle outlets are aimed at reducing the likelihood of shock, which is a notable risk anytime a user is in direct contact with.

The rules for outdoor lighting are principally about using fixtures that are rated for use in damp or wet locations: 1. Light fixtures in wet/exposed areas must be.

Even though standard NM cable has a vinyl outer jacket and waterproof insulation around the individual conducting wires, it is not intended for use in outdoor.

This is not an NEC requirement, but it could save your life, not to mention prevent considerable trouble with your service providers. Call 811, the national.

Do I need a permit to add power to outdoor structures?

The short answer is yes. Most local jurisdictions ask for electrical permits when adding power to outdoor structures. These permits will provide a way to check if your installation meets safety standards and local building codes. Your local building department can help you understand the specific requirements in your area.

What makes a successful outdoor electrical installation?

Include all power sources, circuits, outlets, switches, and device placements. In Conclusion A well-planned electrical layout is the cornerstone of a successful outdoor electrical installation. By taking the time to create a detailed plan, you ensure safety, resource optimization, time efficiency, and ease of troubleshooting.

What type of outdoor outlet should I Choose?

The power requirement of the devices you plan to use also determines the type of outdoor outlet you should choose. If you're planning on operating high-wattage appliances, a higher amp outdoor outlet would be required. In dealing



with outdoor electricity, safety is paramount. Here are some safety measures to consider:

How safe is your outdoor outlet?

The safety of your outdoor outlet largely hinges on its design and installation. The outlet should be weather and tamper-resistant, with a Ground-Fault Circuit Interrupter (GFCI) for protection against electrical shocks.

Why do you need an outdoor outlet?

An outdoor outlet is more than just a power source; it can transform your outdoor space, making it more livable and entertaining. With outdoor outlets, you can power up string lights for ambient evening light, set up an outdoor cinema, keep your outdoor kitchen appliances running, and more.

Do Outdoor outlets and switches need to be wired?

Wiring outdoor outlets and switches is a crucial step in creating a functional and safe outdoor electrical setup. Whether you're adding outlets for convenient power access or installing switches for controlling outdoor lighting, proper wiring is essential to ensure reliable performance and protect against the elements.



How high should the outdoor power supply in the courtyard be



[National Electrical Code \(NEC\) Rules for Outdoor Wiring](#)

Homes must have at least one outdoor receptacle at the front and rear of the house. They must be readily accessible from the ground and positioned no more than 6 1/2 feet above ...

[WhatsApp](#)

[How to install solar energy in the courtyard . NenPower](#)

When selecting a system, energy needs also play a critical role. Homeowners should calculate their energy consumption to determine how many panels are required. If their ...

[WhatsApp](#)



How to Choose the Best Charging Method for an Outdoor Power Supply

In application scenarios such as camping, outdoor photography, emergency rescue, scientific field research, and vehicle-mounted operations, more and more people are facing a common ...

[WhatsApp](#)



[EMSD : 3.5 General Tips for Electrical Installations \(454\)](#)

An electrical appliance with high power consumption should receive power supply from a single socket outlet. Therefore, sufficient nos. of



socket outlets should be installed. Any ...

[WhatsApp](#)



1Set Blue Wind Chimes Solar Power Generation for Courtyard and Outdoor

The hummingbird solar LED wind chime is a decorative lamp that uses solar energy to supply power and is composed of several LED lights. Uses high-efficiency solar panels, which can ...

[WhatsApp](#)



[How to add a power supply in an outdoor public space](#)

Materials and quality The materials used to manufacture power supply units will be a major factor in how durable the unit will be and its longevity (design life). In the case of Pop Up Power ...

[WhatsApp](#)



How big should I buy a solar power supply for my courtyard

Should I oversize or undersize my solar power system? Undersizing your solar power system will leave you without enough power for your needs. Oversizing your system will add unnecessary ...

[WhatsApp](#)

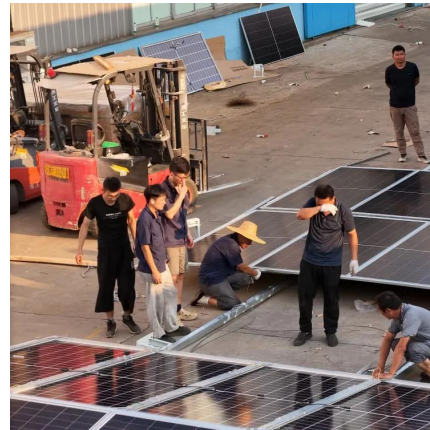




[How to connect solar energy to outdoor power supply](#)

Connecting solar energy to outdoor power supply involves several essential steps, including 1. evaluating energy needs, 2. selecting appropriate solar panels and equipment, 3. ...

[WhatsApp](#)



How to choose a suitable outdoor emergency power supply?

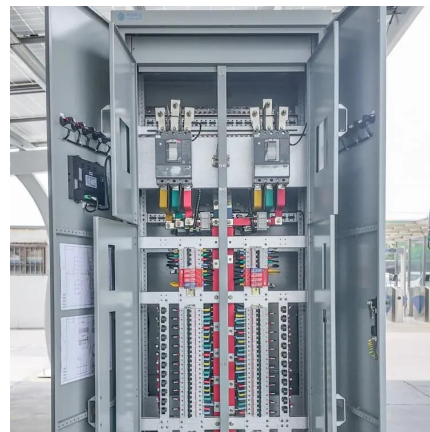
Capacity The capacity of a portable outdoor power supply is an important consideration. It determines how much energy the power station can store and how long it can ...

[WhatsApp](#)

Running Electricity to a Shed: Safely Power Your Outdoor Space

Discover how to assess electrical needs, source power legally and safely, and the nitty-gritty of installation--all while adhering to local building codes. Avoid common pitfalls and power up ...

[WhatsApp](#)



Are your site conditions right for outdoor power distribution units

If you are considering adding a power supply to an outdoor space such as a courtyard, terrace or enclosed garden, it is vitally important to consider how the site's characteristics and conditions ...

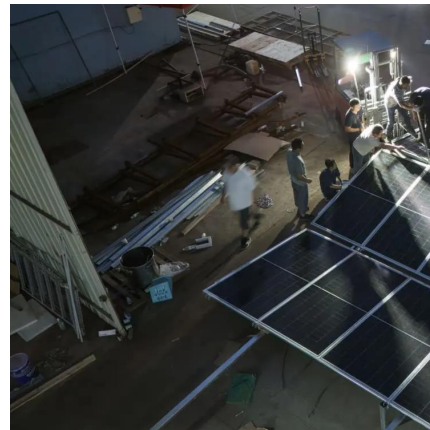
[WhatsApp](#)



[How to choose solar power supply for courtyard home](#)

How to choose an off-grid solar power system? For off-grid solar power systems, a solar battery and other balance of system components are essential. First of all, you need to decide ...

[WhatsApp](#)



[What Are the Guidelines for Outdoor Wiring?](#)

Once the main supply cable is installed, it can provide power to outdoor receptacles and light fixtures. Most codes specify 20-amp service for outdoor circuits, which is plenty of ...

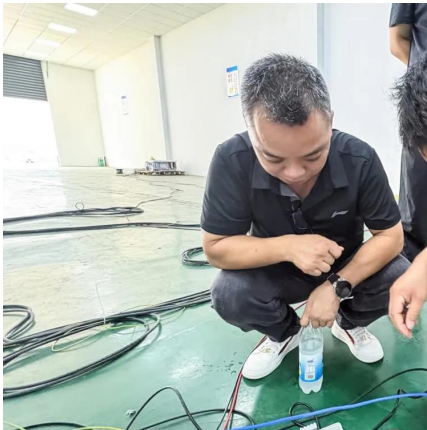
[WhatsApp](#)

Bringing The Indoors Out: The Ultimate Guide to Outdoor Power ...

Perfect for large outdoor spaces where end-users need access to high amperage power for items like food trucks or facility maintenance equipment. Available in 16" and 30" height versions with ...

[WhatsApp](#)





[How to Choose Suitable Outdoor Power Outlets](#)

For better performance and safety in outdoor spaces, it is vital to select the most appropriate outdoor power points. This manual is a complete guide for outdoor power outlets, ...

[WhatsApp](#)

[How to Safely Run Electricity to Your Outdoor Patio](#)

We'll help you choose outdoor-rated electrical components and plan the electrical layout to suit your preferences. You'll discover step-by-step instructions on burying cables, ...

[WhatsApp](#)



Contact Us

For catalog requests, pricing, or partnerships, please visit:
<https://www.straightta.co.za>