

How big of an inverter should I use for a 60v 32AH





Overview

Before we go any further, we highly recommend that you choose a pure sine wave inverter. This type of inverter delivers high-quality electricity, similar to your utility company.

We have summarized the appliances that inverters from 300W to 3000W can run depending on their rated maximum power. Note to our readers: Use the above formula to determine.

What size inverter do I Need?

Inverters come in different sizes starting from as little as 125 watts. The typical inverter sizes used for residential and commercial applications are between 1 and 10kW with 3 and 5kW sizes being the most common. With such an array of options, how do you find the right size for you?

An inverter works best when close to its capacity.

What are the different solar inverter sizes?

Solar generators range in size from small generators for short camping trips to large off-grid power systems for a boat or house. Consequently, inverter sizes vary greatly. During our research, we discovered that most inverters range in size from 300 watts up to over 3000 watts. In this article, we guide you through the different inverter sizes.

Should your inverter size match your solar panel size?

Match your inverter to your lifestyle, not just your roof. If you're running a fridge, home office, and PS5 all day, size accordingly. If you're barely home, go leaner. Here's the cheat code: your inverter size should usually match your solar panel system's size in kilowatts.

How to calculate inverter size?

Using the Inverter Size Calculator is quick and easy. You'll need three inputs: Total Wattage (W): This is the total power consumption of all the appliances or devices you plan to run through the inverter. Safety Factor: A multiplier to



ensure some buffer above your actual power requirement. Typically ranges from 1.1 to 1.5.

How to choose the right inverter power?

Avoids Overloading: By selecting the right inverter power with a safety margin, you prevent overtaxing the system and potential breakdowns. To guarantee a reliable power supply, it is essential to align the continuous output of the inverter with or surpass the total wattage requirements of all connected devices.

How much power does an inverter need?

The continuous power requirement is actually 2250 but when sizing an inverter, you have to plan for the start up so the inverter can handle it. Third, you need to decide how long you want to run 2250 watts. Let's say you would like to power these items for an eight-hour period.



How big of an inverter should I use for a 60v 32AH



If my e-moped has a 60v 32Ah battery, can I replace it with a 60V ...

Replacing a 60V 32Ah battery with a 60V 45Ah battery in a moped should not cause significant problems. In fact, a higher capacity battery may be more advantageous. ...

[WhatsApp](#)

E-SCOOTER LITHIUM-ION BATTERY 60V 32AH

With a 32Ah battery, you can expect extended range, making it suitable for longer commutes or recreational rides without frequent recharging. An e-scooter equipped with a 60V, 32Ah lithium ...

[WhatsApp](#)



What Size Power Inverter Is Needed for a House [Full Guide]

In general, a 3000W to 5000W inverter works well for most homes, but the exact size depends on factors like household appliances, total power consumption, and battery ...

[WhatsApp](#)



Solar Inverter Sizing Guide for Maximum Efficiency , Mingch

In most cases, the inverter size should be close to the size of your solar panel system, within a 33% ratio. For example, a 6.6kW solar array



often pairs with a 5kW inverter to ...

[WhatsApp](#)



[Inverter Size Chat: What Size Inverter Do I Need?](#)

That's why I've put together a handy inverter size chart in order for you to quickly find out what size inverter is best for your needs. We'll start by going through the basic considerations, use ...

[WhatsApp](#)



[How big an inverter should I use for a 300w solar panel](#)

Inverter Size Needed To Run A TV And Lights. Generally, a 300-watt inverter should be enough to run your TV and household lights. More specifically, a 300W inverter is big enough to run an ...

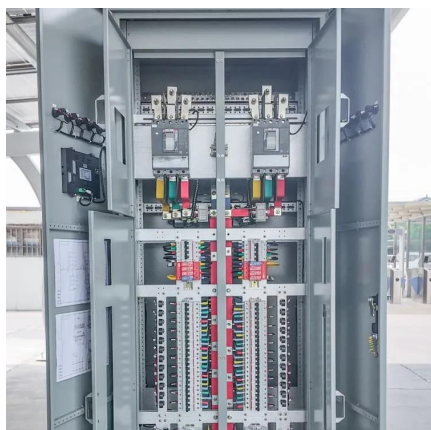
[WhatsApp](#)



[How To Size A Solar Inverter in 3 Easy Steps](#)

In this guide, we share 3 easy steps on how to size a solar inverter correctly. We explain the key concepts that determine solar inverter sizing including your power needs, the type and number ...

[WhatsApp](#)





What Size Solar Inverter Do I Need? Experts Break It Down

Picking the right solar inverter isn't rocket science, but it's not a wild guess either. Match your inverter size to your solar panel output, leave a little headroom, and don't cheap ...

[WhatsApp](#)



Understanding Battery Capacity and Inverter Compatibility

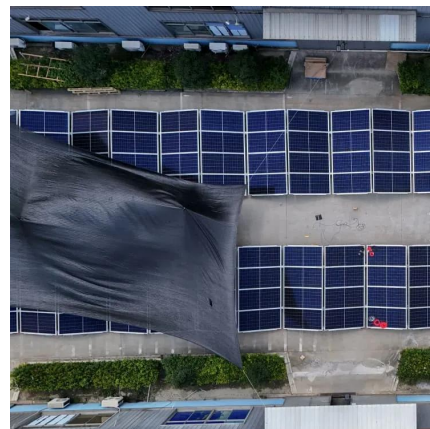
Considerations: Inverter Efficiency: Higher efficiency reduces energy loss and maximizes battery usage. Power Requirements: Match the inverter size to your peak and ...

[WhatsApp](#)

How To Size an Inverter: Solar Inverter Sizing Explained

When sizing an inverter, calculate the total wattage needed and understand surge vs. continuous power. Choose the right size with a 20% safety margin. Factor in simultaneous ...

[WhatsApp](#)



Contact Us

For catalog requests, pricing, or partnerships, please visit:
<https://www.straighta.co.za>