

# **How big of an inverter should I use for 12v 120w**





## Overview

---

Before we go any further, we highly recommend that you choose a pure sine wave inverter. This type of inverter delivers high-quality electricity, similar to your utility company.

We have summarized the appliances that inverters from 300W to 3000W can run depending on their rated maximum power. Note to our readers: Use the above formula to determine.

The calculation for the required inverter size is done using the following formula:  $\text{Inverter Size (W)} = (\text{Total Wattage} \times \text{Safety Factor}) \div \text{Inverter Efficiency}$  This ensures that the inverter can handle both the load and the efficiency losses. How do I choose the right inverter size?

Here is our last bit of advice on how to select the correct inverter size: Check our inverter size chart. List all your appliances in the function of their power output. Apply our inverter size formula. Do not exceed 85% of your inverter's maximum power continuously. Oversize your inverter for extra appliances in the future.

What are the different solar inverter sizes?

Solar generators range in size from small generators for short camping trips to large off-grid power systems for a boat or house. Consequently, inverter sizes vary greatly. During our research, we discovered that most inverters range in size from 300 watts up to over 3000 watts. In this article, we guide you through the different inverter sizes.

How much power does an inverter need?

The continuous power requirement is actually 2250 but when sizing an inverter, you have to plan for the start up so the inverter can handle it. Third, you need to decide how long you want to run 2250 watts. Let's say you would like to power these items for an eight-hour period.

How much wattage should I add to my inverter?

If you are able to find the specific wattages for your devices, you'll want to



add them together to get a bare minimum figure. This number will be the smallest inverter that could possibly suit your needs, so it's a good idea to add between 10 and 20 percent on top and then buy an inverter that size or larger.

How to size a 1500 watt power inverter?

A rule-of-thumb for sizing your 1500-watt power inverter is to combine the wattage of all the devices you are planning to use at the same time (don't forget basic necessities, like lights) and give yourself 20% headroom.

How do I Choose an RV inverter?

Calculate the total wattage by adding up the running watts of all appliances. Take into consideration the surge requirements of appliances with electric motors. Choose an inverter size that's at least 20% larger than the total calculated wattage. Identify the largest power draws in your RV to accurately size the inverter for your specific needs.



## How big of an inverter should I use for 12v 120w

---



### [Using 1000w inverter to charge portable power station](#)

My thought it is run a 1000 watt 12v DC to 120v AC inverter, so I can charge up the EcoFlow within 1-2 hours while driving between campgrounds. I am looking at something like ...

[WhatsApp](#)

### [How To Size an Inverter: Solar Inverter Sizing Explained](#)

Choose an inverter size that's at least 20% larger than the total calculated wattage. Identify the largest power draws in your RV to accurately size the inverter for your specific needs.

[WhatsApp](#)



### **12v to 120v inverter efficiency. Multiple small units, 1 large unit, or**

Should I buy a big old 2000w inverter to power everything, or will that use 200w just to power my little 45w laptop? FWIW, I don't need to be told to get a 12v adapter for my laptop, that's just ...

[WhatsApp](#)

### [What Size Inverter You Need \(Calculations + Battery\)](#)

When looking at an inverter to run your entire home from a solar PV System, these are much bigger, but in essence, the principles behind the





calculations are the same. Still, ...

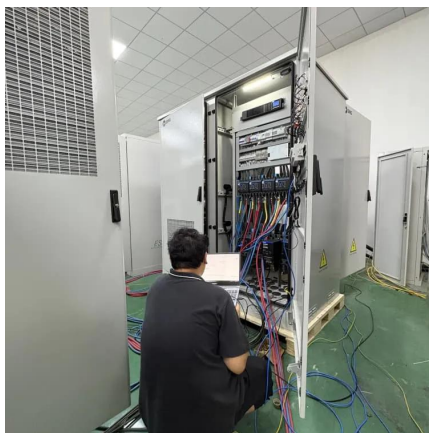
[WhatsApp](#)



### [What Size Inverter do I Need? \[with Examples\]](#)

If it fits your inverter, then, size of 400-watts is right for you, if not, get a bigger inverter or step down on your load. You can run either one large device or several smaller devices at the same ...

[WhatsApp](#)



### **How long I can run a 200Wh desktop PC using 12V 100A Battery ...**

We are having power cuts in our country so I want to store power in a 12V 100A battery and when we having power cuts, use an inverter to convert 12V to 230V to power up the PC. My ...

[WhatsApp](#)



### [How To Calculate Solar Panel Battery And Inverter Size](#)

How To Calculate Solar Panel Battery And Inverter Calculate Solar Panel Battery Inverter and Charge Controller So to get started, you will just need to use solar angle calculator and ...

[WhatsApp](#)





### [Inverter Size Chat: What Size Inverter Do I Need?](#)

That's why I've put together a handy inverter size chart in order for you to quickly find out what size inverter is best for your needs. We'll start by going through the basic considerations, use ...

[WhatsApp](#)



## Contact Us

---

For catalog requests, pricing, or partnerships, please visit:  
<https://www.straighta.co.za>