

How big of an inverter do I need for a 220v 2 kilowatt power supply





Overview

Before we go any further, we highly recommend that you choose a pure sine wave inverter. This type of inverter delivers high-quality electricity, similar to your utility company.

We have summarized the appliances that inverters from 300W to 3000W can run depending on their rated maximum power. Note to our readers: Use the above formula to determine.

The calculation for the required inverter size is done using the following formula: $\text{Inverter Size (W)} = (\text{Total Wattage} \times \text{Safety Factor}) \div \text{Inverter Efficiency}$. This ensures that the inverter can handle both the load and the efficiency losses. How do I choose the right inverter size?

Here is our last bit of advice on how to select the correct inverter size: Check our inverter size chart. List all your appliances in the function of their power output. Apply our inverter size formula. Do not exceed 85% of your inverter's maximum power continuously. Oversize your inverter for extra appliances in the future.

What are the different solar inverter sizes?

Solar generators range in size from small generators for short camping trips to large off-grid power systems for a boat or house. Consequently, inverter sizes vary greatly. During our research, we discovered that most inverters range in size from 300 watts up to over 3000 watts. In this article, we guide you through the different inverter sizes.

How much wattage should I add to my inverter?

If you are able to find the specific wattages for your devices, you'll want to add them together to get a bare minimum figure. This number will be the smallest inverter that could possibly suit your needs, so it's a good idea to add between 10 and 20 percent on top and then buy an inverter that size or larger.

How to size a 1500 watt power inverter?



A rule-of-thumb for sizing your 1500-watt power inverter is to combine the wattage of all the devices you are planning to use at the same time (don't forget basic necessities, like lights) and give yourself 20% headroom.

How much power does an inverter need?

The continuous power requirement is actually 2250 but when sizing an inverter, you have to plan for the start up so the inverter can handle it. Third, you need to decide how long you want to run 2250 watts. Let's say you would like to power these items for an eight-hour period.

How many watts is a 300 watt inverter?

Basically, what you are looking for is 300 watts of continuous power. The Peak (or surge) power of these types of inverters is usually 600 watts and is meant to be available only for few seconds (since a lot of appliances have a high initial surge of power demand).



How big of an inverter do I need for a 220v 2 kilowatt power supply



[Can I Use an Inverter to Run a Heater?](#)

A 2000W heater is ideal for a 1500W inverter. A 1500W inverter is enough on paper, but due to inverter inefficiency you should opt for 2000 watts., Plus you will want more power in case of a ...

[WhatsApp](#)

Inverter Size Calculator & Formula Online Calculator Ultra

Historical Background Inverters have become a crucial part of power systems, especially with the rise of solar energy and off-grid power solutions. An inverter converts direct ...

[WhatsApp](#)



Finding the Best Inverter Size for Your Home's Energy ...

An inverter is an essential component of any off-grid or backup power system, as it converts direct current (DC) power from a battery or solar panel array into alternating current (AC) power that ...

[WhatsApp](#)

Can I Run My Well Pump With A Generator? (Different Size Table)

A 1 HP pump will need 3-4 KW of power to start and 1 KW to run, so you must size your generator accordingly. In this article, you will



learn how to calculate the wattage requirement of the well ...

[WhatsApp](#)



What Size Inverter Do You Need for Your Home? , Renogy US

When choosing the size of the inverter, you need to consider several things, including the continuous power or running wattage of all appliances and surge capacity or the highest ...

[WhatsApp](#)



What Size Power Inverter Is Needed for a House [Full Guide]

In general, a 3000W to 5000W inverter works well for most homes, but the exact size depends on factors like household appliances, total power consumption, and battery ...

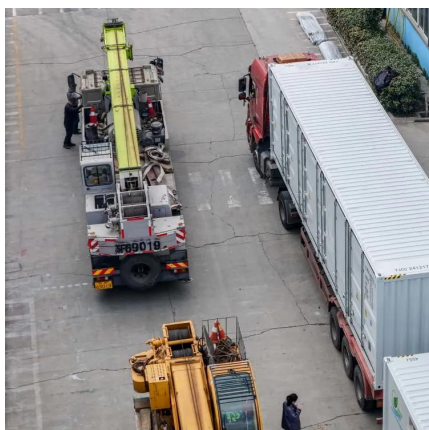
[WhatsApp](#)



[What Size Inverter do I Need? \[with Examples\]](#)

Sizing an inverter is very simple, as long as you know how much power do you exactly need. If you think that at some point you will be plugging in more devices, consider that as well and ...

[WhatsApp](#)





Selecting the Proper Inverter / Frequency Converter for your

What size inverter do I need? (Starting Load and Continuous Load) The power output rating of the inverter you choose (in VA or in watts) is directly dependant on the load you will be powering. ...

[WhatsApp](#)



Contact Us

For catalog requests, pricing, or partnerships, please visit:
<https://www.straighta.co.za>