

How big of an inverter can a 100A GEL battery be used with





Overview

A 1000W inverter can typically be used without issues, as it falls within the safe operating range. A 1500W inverter might work but will significantly reduce runtime and could risk overloading the battery if used continuously. What size inverter for a 100Ah battery?

In general, for a 100ah battery, a 1000 watt pure sine wave inverter will be a good suit. It provides enough power to operate a wide range of household or camping appliances. Now, let's figure out how to choose the right inverter size for a 100ah battery, based on what you need. How to Choose the Right Size Inverter for a 100Ah Battery?

.

How do I match my inverter with a 100Ah battery?

To match your inverter with a 100Ah battery, several factors must be considered. Inverters are rated based on continuous power and surge power. Continuous power is the amount of power the inverter can supply continuously without overheating or damage. Surge power refers to the short-term power needed to start appliances with high startup currents.

Can I use a 2000 watt inverter with a 100 watt battery?

Yes, you can use a 2000 watt inverter with a 100ah battery. But if you use 2000 watts from your 12v 100ah battery, it will use up the battery faster and over time, it will also shorten the battery's life. Can I use a 1500W inverter with a 100Ah battery?

Yes, you can use a 1500 watt inverter with a 100ah battery.

How to calculate inverter size for 100 Ah battery?

Step to calculate inverter size for 100ah battery: Calculate the total load you intend to use and add 20% for a safety margin. Select the inverter type: Choose a pure sine wave inverter for superior performance and protect your



appliances from potential damage.

How much wattage do I need for a 100Ah battery?

By doing so, the monitor will display the total wattage consumed by the appliance. Based on the total load of 325 watts, you'll need at least a 350W inverter to power them well with a 100Ah battery. Although, it is advisable to add an extra 20% to the total load when sizing the inverter to account for safety factors.

Does battery capacity dictate inverter size?

However, battery capacity alone doesn't dictate inverter size. The inverter converts DC power from the battery into AC power, which is required by most household appliances. To match your inverter with a 100Ah battery, several factors must be considered. Inverters are rated based on continuous power and surge power.



How big of an inverter can a 100A GEL battery be used with



[What Size Inverter Can I Run Off a 100Ah Battery? A ...](#)

Understanding Battery and Inverter Basics
Battery Capacity and Inverter Compatibility A 100Ah battery signifies its capacity to deliver 100 ampere-hours of current. This ...

[WhatsApp](#)

So many questions about 12v GEL batteries and 48v configuration

Hi, new to solar, building a system for my dad, off-grid cabin. He bought about 20 Suntech 190W panels, and I set it up as a simple system with 4 DiaMec GEL batteries in ...

[WhatsApp](#)



[Sizing the Right Inverter for 100ah Battery](#)

Based on the total load of 325 watts, you'll need at least a 350W inverter to power them well with a 100Ah battery. Although, it is advisable to add an extra 20% to the total load ...

[WhatsApp](#)

[Calculate Battery Size for Inverter Calculator](#)

The Calculate Battery Size for Inverter Calculator helps you determine the optimal battery capacity needed to support your inverter system. By inputting critical parameters such ...



[WhatsApp](#)



[What Size Inverter Can I Run Off a 100Ah Battery? A...](#)

The right combination ensures efficiency, longevity, and optimal performance. This detailed guide will help you navigate through the decision-making process to determine the ...

[WhatsApp](#)



What Size Inverter Can I Run Off a 100Ah Battery? Maximize ...

Therefore, you can maximize your power capacity by using an inverter rated around 1000 to 1200 watts. This size allows you to run devices like lights, small appliances, ...

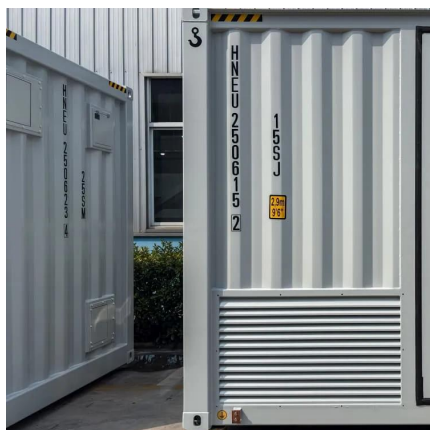
[WhatsApp](#)



[How Long Will a 12V Battery Last When Using an Inverter](#)

A 12V battery is a common power source for many off-grid applications, including RVs, solar power systems, and backup energy solutions. If you're using an inverter to convert ...

[WhatsApp](#)





[What Size Inverter for 100Ah Battery? - MWXNE POWER](#)

In this guide, we'll walk you through what size inverter works best with a 100Ah battery, how long your battery will last, and how to size your inverter-and-battery combo for ...

[WhatsApp](#)



How to Determine What Size Inverter You Can Run Off a 100Ah Battery

A 1000W inverter can typically be used without issues, as it falls within the safe operating range. A 1500W inverter might work but will significantly reduce runtime and could risk overloading the ...

[WhatsApp](#)



[What Size Battery Do I Need for a 1000W Inverter?](#)

Calculating Battery Size for a 1000W Inverter
When selecting a battery to support a 1000W inverter, several factors must be taken into account, including the inverter's wattage, ...

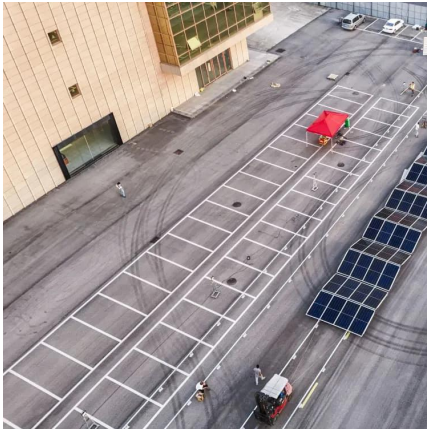
[WhatsApp](#)



Calculate Battery Size For Any Size Inverter (Using Our Calculator)

Inverter capacity (W)*Runtime (hrs)/solar system voltage = Battery Size*1.15. Multiply the result by 2 for lead-acid type battery, for lithium battery type it would stay the ...

[WhatsApp](#)



How to Determine What Size Inverter You Can Run Off a 100Ah ...

A 1000W inverter can typically be used without issues, as it falls within the safe operating range. A 1500W inverter might work but will significantly reduce runtime and could risk overloading the ...

[WhatsApp](#)



Can I use a large solar charge controller with a small battery?

Victron charge controllers can communicate with a monitor that has battery shunt, so their output is adjusted appropriately. AC coupled systems (like my Sunny Island battery ...

[WhatsApp](#)



Contact Us

For catalog requests, pricing, or partnerships, please visit:
<https://www.straighta.co.za>