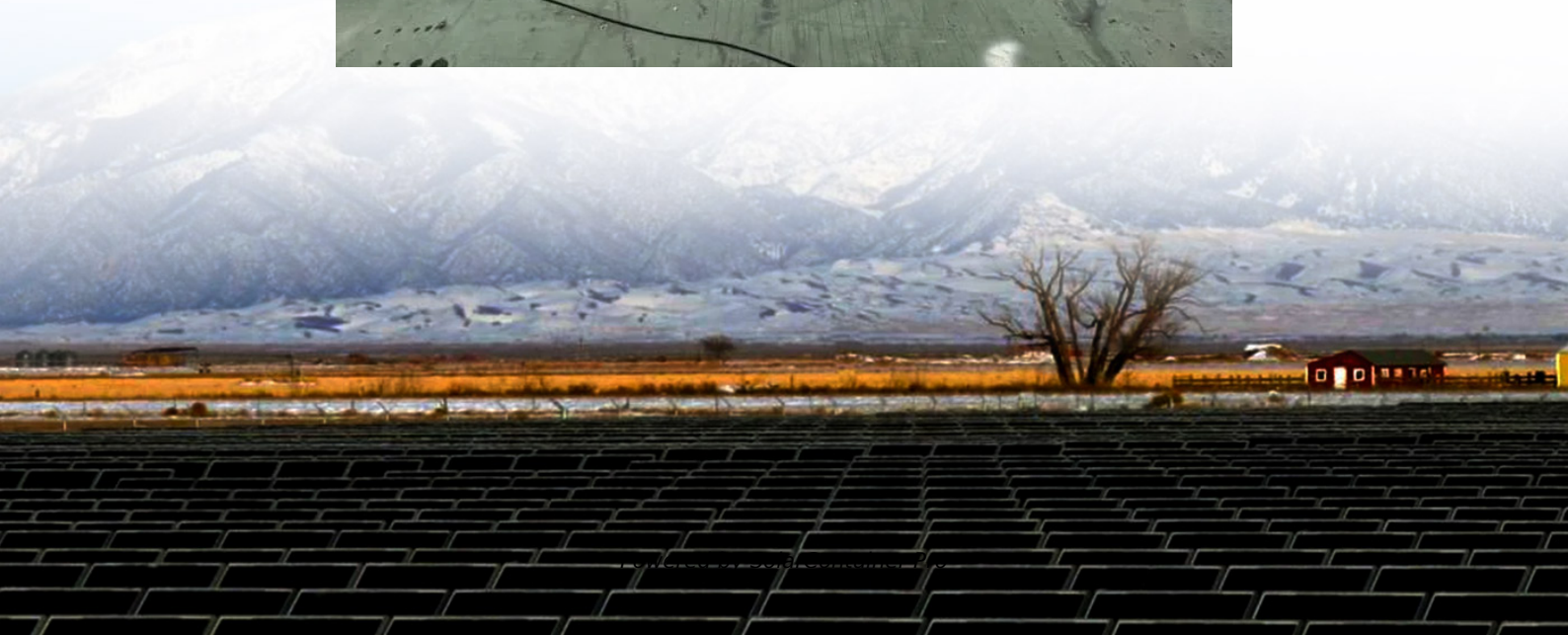


How big is the photovoltaic cell inverter





Overview

What are the different solar inverter sizes?

Solar generators range in size from small generators for short camping trips to large off-grid power systems for a boat or house. Consequently, inverter sizes vary greatly. During our research, we discovered that most inverters range in size from 300 watts up to over 3000 watts. In this article, we guide you through the different inverter sizes.

What is a solar power inverter?

A solar power inverter is an essential element of a photovoltaic system that makes electricity produced by solar panels usable in the home. It is responsible for converting the direct current (DC) output produced by solar panels into alternating current (AC) that can be used by household appliances and can be fed back into the electrical grid.

How do I choose a solar inverter?

When designing a solar installation, and selecting the inverter, we must consider how much DC power will be produced by the solar array and how much AC power the inverter is able to output (its power rating).

How many watts a solar inverter do I Need?

A 200 watt portable unit such as the NDDI Direct Power Inverter will be sufficient for that. If you are going to run an air conditioner or a refrigerator in your RV, a more powerful inverter and battery are required. Ready to size your solar system the smart way?

.

How to size an inverter?

If you want to know how to size an inverter, the answer is simple. All you have to do is find out how much power your devices need. Then, do some simple



math to determine how much more power you need to compensate for inverter losses and headroom.

Can a solar inverter be bigger than the DC rating?

The size of your solar inverter can be larger or smaller than the DC rating of your solar array, to a certain extent. The array-to-inverter ratio of a solar panel system is the DC rating of your solar array divided by the maximum AC output of your inverter. For example, if your array is 6 kW with a 6000 W inverter, the array-to-inverter ratio is 1.



How big is the photovoltaic cell inverter



[Solar panel inverters & costs: the expert guide \[UK, 2025\]](#)

What is a solar panel inverter? A solar panel inverter converts the direct current (DC) electricity generated by your solar panels into alternating current (AC), which is the type ...

[WhatsApp](#)

[Solar inverter sizing: Choose the right size inverter](#)

Most PV systems don't regularly produce at their nameplate capacity, so choosing an inverter that's around 80 percent lower capacity than the PV system's nameplate output is ideal.

[WhatsApp](#)



[How Big Are Solar Panels? Solar Panel Size Guide](#)

Solar Cells The size of a solar panel can also be described by how many cells it has. The squares you see on solar panels are solar cells, which use the photovoltaic effect to ...

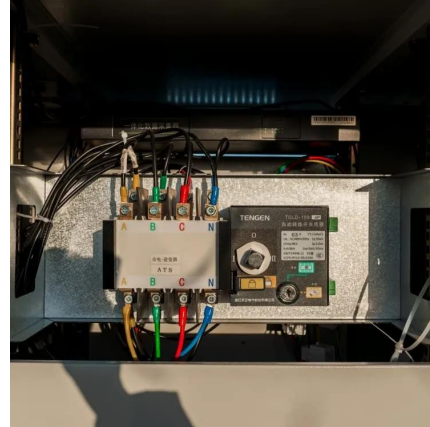
[WhatsApp](#)

[The Only Inverter Size Chart You'll Ever Need](#)

Most PV systems don't regularly produce at their nameplate capacity, so choosing an inverter that's around 80 percent lower capacity than the PV system's nameplate output is ideal.



[WhatsApp](#)



[Photovoltaics: Basic Principles and Components](#)

Photovoltaics: Basic Design Principles and Components If you are thinking of generating your own electricity, you should consider a photovoltaic (PV) system--a way to generate electricity ...

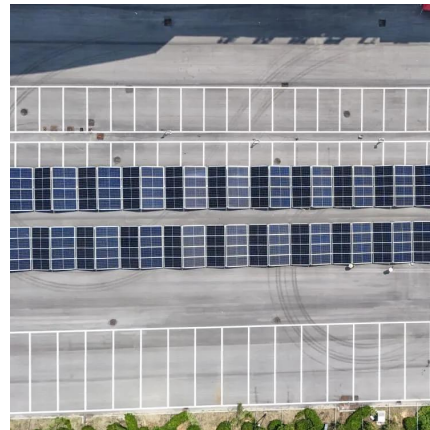
[WhatsApp](#)



[How To Size An Inverter for Solar and Off Grid](#)

If you want to know how to size an inverter, the answer is simple. All you have to do is find out how much power your devices need. Then, do some simple math to determine how ...

[WhatsApp](#)



[How To Size an Inverter: Solar Inverter Sizing Explained](#)

When sizing an inverter, calculate the total wattage needed and understand surge vs. continuous power. Choose the right size with a 20% safety margin. Factor in simultaneous ...

[WhatsApp](#)





Solar inverter size: Calculate the right size for your inverter

Inverters work most efficiently when operating near their maximum capacity and are typically sized to be roughly the same size as your solar panels. Inverters are usually sized lower than ...

[WhatsApp](#)



Contact Us

For catalog requests, pricing, or partnerships, please visit:
<https://www.straighta.co.za>