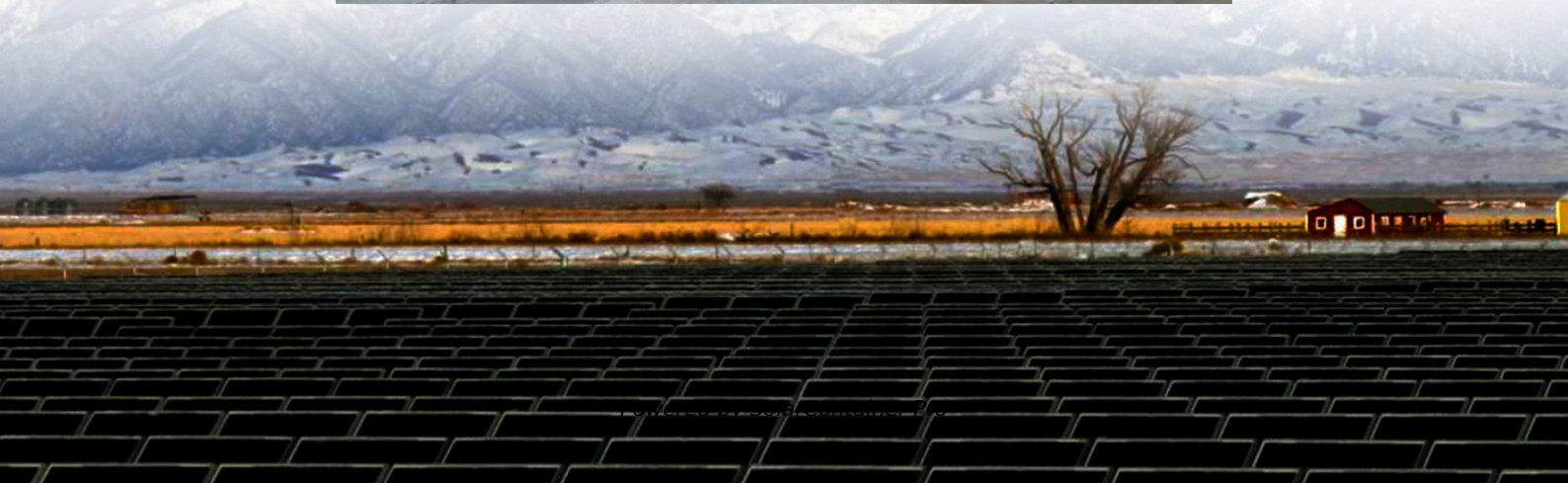


# **How big is the battery of the communication base station inverter**





## Overview

---

Which battery is best for telecom base station backup power?

Among various battery technologies, Lithium Iron Phosphate (LiFePO<sub>4</sub>) batteries stand out as the ideal choice for telecom base station backup power due to their high safety, long lifespan, and excellent thermal stability.

What makes a telecom battery pack compatible with a base station?

Compatibility and Installation Voltage Compatibility: 48V is the standard voltage for telecom base stations, so the battery pack's output voltage must align with base station equipment requirements. Modular Design: A modular structure simplifies installation, maintenance, and scalability.

Why is backup power important in a 5G base station?

With the rapid expansion of 5G networks and the continuous upgrade of global communication infrastructure, the reliability and stability of telecom base stations have become critical. As the core nodes of communication networks, the performance of a base station's backup power system directly impacts network continuity and service quality.

How does a solar inverter work?

The electric energy generated by the photovoltaic module is controlled by the intelligent controller to charge the battery; the DC power of the battery is supplied to the DC load by the controller or used by the AC load after being inverted by the inverter. Fully use solar energy to generate electricity independently, without external power supply;.

What is a wide temperature range LiFePO<sub>4</sub> battery?

This translates to lower replacement frequency and maintenance costs. Wide Temperature Range LiFePO<sub>4</sub> batteries operate reliably in temperatures ranging from -20°C to 60°C, making them suitable for the diverse and often extreme environments of telecom base stations.



## How big is the battery of the communication base station inverter

---



### [Communication Base Station Backup Battery](#)

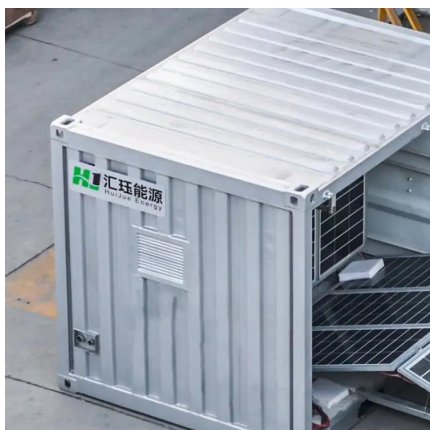
High-capacity energy storage solutions, specifically designed for communication base stations and weather stations, with strong weather resistance to ensure continuous operation of ...

[WhatsApp](#)

### [Communication Base Station Energy Power Supply System](#)

We offer lithium batteries for golf carts, AGVs, AMRs, forklifts, and rack-mounted storage, along with power solutions for communication base stations and solar water pumping.

[WhatsApp](#)



### [Communication base station backup battery 48V/51.2V 50Ah](#)

We offer 48V50Ah (CATL) batteries with sophisticated & reliable BMS. You can connect them in parallel to make 2.4kwh to 120kWh system. IEC62619 & UN38.3 certificates. Compatible ...

[WhatsApp](#)

## Communication Base Station

The electric energy generated by the photovoltaic module is controlled by the intelligent controller to charge the battery; the DC power of the battery is supplied to the DC



load by the controller ...

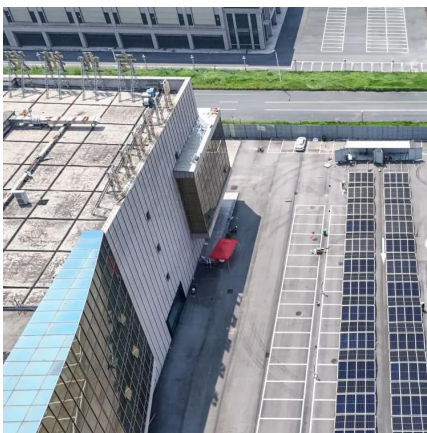
[WhatsApp](#)



### [Utility-scale battery energy storage system \(BESS\)](#)

Introduction Reference Architecture for utility-scale battery energy storage system (BESS) This documentation provides a Reference Architecture for power distribution and conversion - and ...

[WhatsApp](#)



### [Communication Base Station Energy Solutions](#)

During the day, the solar system powers the base station while storing excess energy in the battery. At night, the energy storage system discharges to supply power to the base station, ...

[WhatsApp](#)



### [Battery technology for communication base stations](#)

In order to ensure the reliability of communication, 5G base stations are usually equipped with lithium iron phosphate cascade batteries with high energy density and high charge and ...

[WhatsApp](#)







### **16S Lifepo4 Battery BMS with RS485 communication for 48V ...**

3.10 .Multiple series Communication of RS485 :  
While BMS connected in parallels, it can communicate with inverter's controller with specified hub box,communication adopted ...

[WhatsApp](#)



### [Cooling for Mobile Base Stations and Cell Towers](#)

Application Overview Bulky compressor-based air conditioners have traditionally been used for removing heat generated by communications equipment installed in base station and cell ...

[WhatsApp](#)



## **Contact Us**

---

For catalog requests, pricing, or partnerships, please visit:  
<https://www.straighta.co.za>