

How big an inverter should I use for my PV panels





Overview

Your inverter should match your solar and battery needs. A properly sized inverter ensures efficient charging, discharging, and home power supply. Most UK homes need at least a 5 kW inverter. While 3.68 kW is common, larger homes or those with batteries benefit from a 5 kW+ system. How do I choose the right solar inverter size?

When it comes to solar inverter sizing, installers will consider three primary factors: the size of your solar array, geography, and site-specific conditions. The size of your solar array is the most important factor in determining the appropriate size for your solar inverter.

What size inverter do I Need?

Inverters come in different sizes starting from as little as 125 watts. The typical inverter sizes used for residential and commercial applications are between 1 and 10kW with 3 and 5kW sizes being the most common. With such an array of options, how do you find the right size for you?

An inverter works best when close to its capacity.

What is solar inverter sizing?

Solar inverter sizing refers to choosing an inverter with the appropriate AC output for your solar panel system's DC input. It's about matching capacity and performance, without wasting energy or breaching local export limits. Inverter size is measured in kilowatts (kW). It should match your solar array within a 1.15 to 1.33 ratio.

Can a solar inverter be bigger than the DC rating?

The size of your solar inverter can be larger or smaller than the DC rating of your solar array, to a certain extent. The array-to-inverter ratio of a solar panel system is the DC rating of your solar array divided by the maximum AC output of your inverter. For example, if your array is 6 kW with a 6000 W inverter, the array-to-inverter ratio is 1.



Do I need a big solar inverter?

If you consume 10 kWh, approximately, every day, then you will need an inverter that can effectively handle that energy use. You may need to have a big inverter should you expect to use more energy during peak hours than allow for that excess generation capacity. How Do I Calculate My Solar Inverter?

.

How much wattage should a solar inverter have?

Determine how many watts and the number of solar panels you will be installing. For example, assume you have eight 350W panels, then your total wattage would be ($8 * 350W = 2800W$) or 2.8kW. This number will become important in the inverter sizing equation. 3. Account for System Losses



How big an inverter should I use for my PV panels



[What Size Inverter You Need \(Calculations + Battery\)](#)

Inverters are made with different power capacities, depending on the size of the system you want to run. For this discussion, we are looking at a domestic inverter that you can ...

[WhatsApp](#)

[calculate inverter size for solar + Sizing Formula](#)

Common sizes range between 1kW and upwards over 10kW. In order to accurately size your inverter, here is a very simple formula:
projectiles. Inverter Size = Total Solar Panel ...

[WhatsApp](#)



[What size inverter is best for solar panels?](#)

This article will take a deep dive into how to choose the best inverter size for your solar panels and provide practical advice to help you make an informed decision in the process.

[WhatsApp](#)

Solar inverter size: Calculate the right size for your inverter

Inverters work most efficiently when operating near their maximum capacity and are typically sized to be roughly the same size as your solar



panels. Inverters are usually sized lower than ...

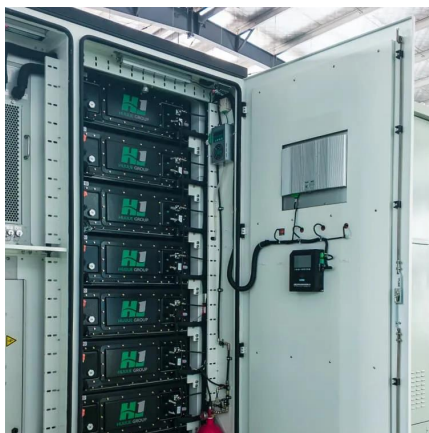
[WhatsApp](#)



Solar Inverter Sizing Guide for Maximum Efficiency , Mingch

In most cases, the inverter size should be close to the size of your solar panel system, within a 33% ratio. For example, a 6.6kW solar array often pairs with a 5kW inverter to ...

[WhatsApp](#)



Find the Right Inverter Size: How Big An Inverter Do You need?

When it comes to powering your devices through an inverter, one of the most critical aspects to consider is size--how big an inverter do you need? Whether you're on an ...

[WhatsApp](#)



[How To Size an Inverter: Solar Inverter Sizing Explained](#)

When sizing an inverter, calculate the total wattage needed and understand surge vs. continuous power. Choose the right size with a 20% safety margin. Factor in simultaneous ...

[WhatsApp](#)





[What size inverter do I need?_Tech Pro_Hoymiles](#)

What size solar inverter do I need? The type of inverter and size of inverter you need will depend on many factors and is going to be different in every situation. One big factor ...

[WhatsApp](#)



Contact Us

For catalog requests, pricing, or partnerships, please visit:
<https://www.straighta.co.za>