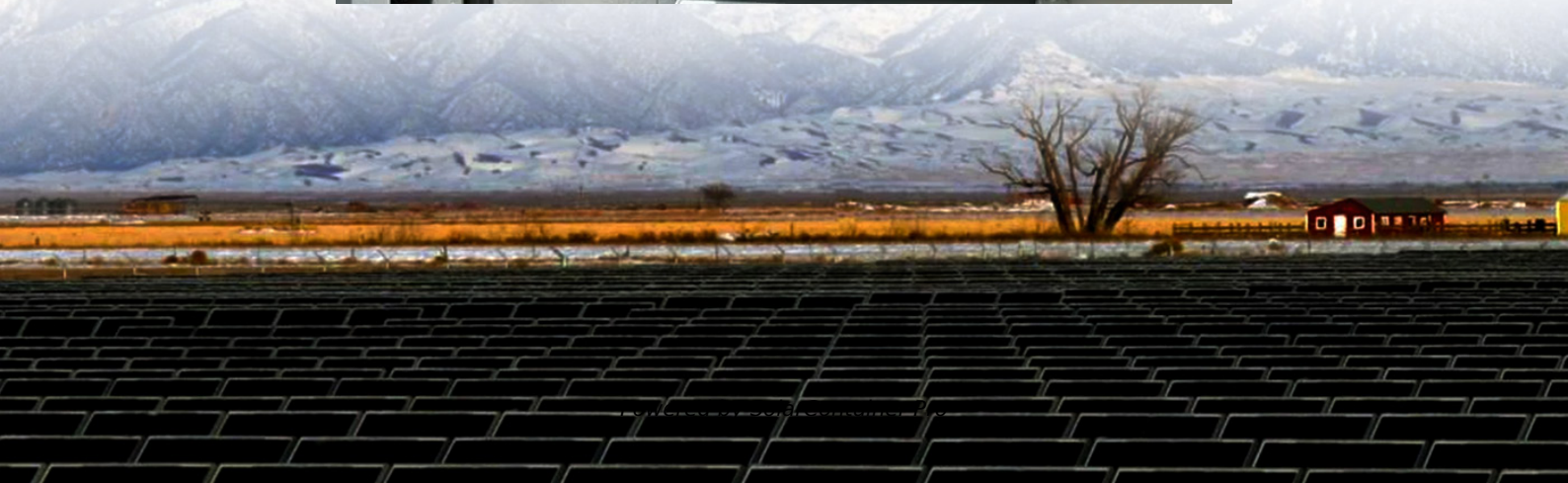


# **How big an inverter should I use for an 825kw photovoltaic power station**





## Overview

---

The rule of thumb is to size your inverter 1.25 bigger than your solar array. In some cases, you may need to use multiple inverters to meet your power needs or increase your system's voltage. This practice, known as inverter stacking, involves connecting multiple inverters in parallel or series. What size solar inverter do I Need?

A 4.5 kW array (or ten 450-watt solar panels) would just about cover your consumption. The type of solar panels you choose can also impact the size of the inverter you need. Different types of solar panels have different wattage ratings and efficiency levels. The three main types of solar panels are monocrystalline, polycrystalline, and thin film.

What is a solar inverter sizing calculator?

A solar inverter sizing calculator is a tool used to determine the appropriate size of a solar inverter for your solar power system based on the total power consumption of connected appliances and the size of your solar panel array. It ensures the inverter can handle the peak loads efficiently.

How many kW can a solar inverter generate?

Total capacity =  $20 \times 500 = 10,000$  watts or 10 kW The industry standard suggests that the inverter's capacity should be between 80% to 125% of the solar panels' capacity. For example, if your panels generate 10 kW: Minimum inverter size =  $10,000 \times 0.8 = 8$  kW Maximum inverter size =  $10,000 \times 1.25 = 12.5$  kW.

Should your inverter size match your solar panel size?

Match your inverter to your lifestyle, not just your roof. If you're running a fridge, home office, and PS5 all day, size accordingly. If you're barely home, go leaner. Here's the cheat code: your inverter size should usually match your solar panel system's size in kilowatts.

How much power does a 5 kW inverter use?



If your system pushes 5,000 watts, a 5,000-watt (or 5 kW) inverter is usually the move. But it's not always one-to-one. Some setups undersize the inverter a bit—say, 4.6 kW for 5 kW of panels—to save cash without losing much power. It's a balancing act between cost, performance, and when you actually use electricity.

How do I choose a solar inverter?

This is the most critical factor in solar inverter sizing. Check the total wattage of your solar array (DC) and use it to calculate the appropriate inverter output (AC). For optimal results, a 6.6kW array typically pairs with a 5kW inverter, falling within the accepted array-to-inverter ratio of 1.15 to 1.33.



## How big an inverter should I use for an 825kw photovoltaic power s

---



### Understanding Battery Capacity and Inverter Compatibility

To estimate how long a battery can run an inverter, we need to consider the power draw and the battery's capacity. Using a 100 Ah battery with a 1000W inverter, we perform the ...

[WhatsApp](#)

### HOW BIG SHOULD A SOLAR INVERTER BE?

FAQS about How big an inverter should a 23kw photovoltaic power station use How do I choose a solar inverter size? To calculate the ideal inverter size for your solar PV system, you should ...

[WhatsApp](#)



### [What Size Inverter You Need \(Calculations + Battery\)](#)

Fuse and cable sizes Inverter Vs. Generator If you're genuinely sick and tired of dealing with power outages, it's time to find out what size inverter you need! What Is An ...

[WhatsApp](#)



### [How to pick the right Inverter: Guide from Naked Solar](#)

Inverter sizes are expressed in kW which is normally sized lower than the kWp of an array. This is because inverters are more efficient when



working at their maximum power and most of the ...

[WhatsApp](#)



### **What Size Inverter Do I Need ?A Complete Guide to Choosing ...**

Discover how to select the perfect inverter size for your solar or backup power system. Learn to calculate power requirements, account for surge loads, match battery ...

[WhatsApp](#)



### **Solar inverter size: Calculate the right size for your inverter**

Discover why solar inverter sizing is important for efficiency and performance. Learn how to calculate the ideal inverter size for your solar panels, battery, and household energy needs.

[WhatsApp](#)



### **Solar Inverter Sizing Guide for Maximum Efficiency , Mingch**

This article explains how to calculate your inverter size, what affects it, and how to avoid costly mistakes, especially when using high-efficiency solutions like MINGCH Electrical's ...

[WhatsApp](#)







## What Size Solar Inverter Do I Need? Experts Break It Down

But before you start soaking up the sun, you'll need the right inverter to match your system. This guide breaks down what size solar inverter you actually need--so your setup ...

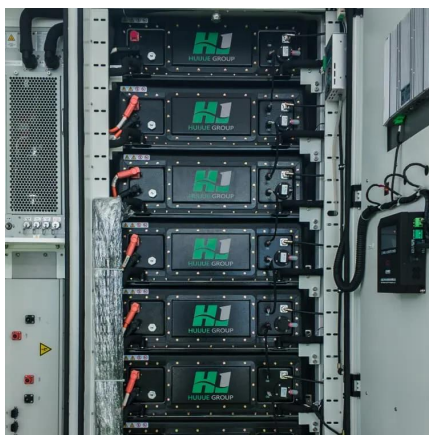
[WhatsApp](#)



## How big an inverter should I use for 13kw photovoltaic power ...

A solar inverter can be undersized in two ways, buying a smaller inverter or increasing the number of existing solar panels. Undersizing the inverter results in more power clipping, meaning that ...

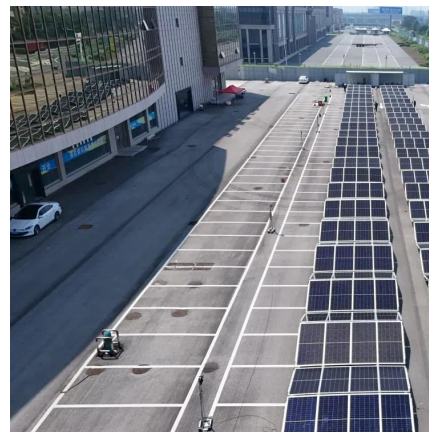
[WhatsApp](#)



## How big an inverter should I use for a 12kw photovoltaic station

What wattage should a solar inverter be? Installers typically follow one of three common solar inverter sizing ratios: For our example 7 KW system, this translates to inverter sizes between ...

[WhatsApp](#)



## Frequently Asked Questions About Power Inverters , DonRowe

Power Inverter FAQ Frequently Asked Questions about Power Inverters What does a power inverter do, and what can I use one for? Using an inverter for basic emergency home backup ...

[WhatsApp](#)



## Contact Us

---

For catalog requests, pricing, or partnerships, please visit:  
<https://www.straighta.co.za>