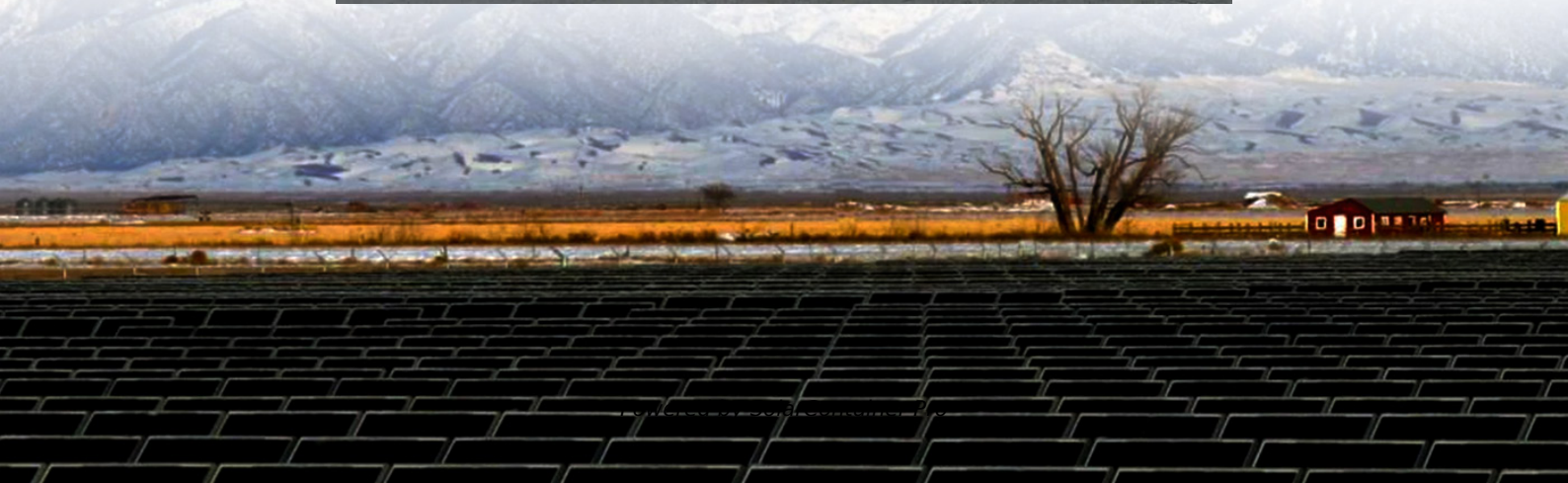


How big an inverter should I use for a 24kw photovoltaic panel





Overview

The generally recommended inverter capacity should be 120%-150% of the load demand to cope with transient loads and possible future expansion. Inverter capacity calculation formula: $\text{Inverter Capacity (W)} = \frac{\text{Daily Power Demand (Wh)}}{\text{Inverter Efficiency} \times \text{Battery Charging Efficiency}}$ What size solar inverter do I Need?

A 4.5 kW array (or ten 450-watt solar panels) would just about cover your consumption. The type of solar panels you choose can also impact the size of the inverter you need. Different types of solar panels have different wattage ratings and efficiency levels. The three main types of solar panels are monocrystalline, polycrystalline, and thin film.

Should your inverter size match your solar panel size?

Match your inverter to your lifestyle, not just your roof. If you're running a fridge, home office, and PS5 all day, size accordingly. If you're barely home, go leaner. Here's the cheat code: your inverter size should usually match your solar panel system's size in kilowatts.

How many solar panels can a 5kw inverter handle?

The inverter's size must match the total wattage of your solar panels. Choosing the right inverter size is crucial for your system's best performance. When asking how many panels a 5kW inverter can handle, the answer is about 16-20 standard 300-watt panels. This is because a 5kW inverter can manage a total capacity of 6-7.5 kW.

Why should you choose a solar inverter size?

Inverters play a vital role in converting the direct current (DC) generated by your solar panels into usable alternating current (AC) for your home. Selecting the proper inverter size ensures that your solar system operates at its full potential, ultimately impacting energy savings and system longevity.

Can I use multiple inverters for my solar panel system?



A: Yes, you can use multiple inverters for your solar panel system, commonly known as a micro-inverter system. This setup allows each solar panel to have its own inverter, optimizing performance and allowing for better energy production, especially in situations where panels may be shaded or facing different directions.

What is the best inverter to solar panel ratio?

The best inverter-to-solar panel ratio is between 0.8 and 1.0. This means the inverter should be slightly smaller than the total solar panel capacity. This ratio ensures the system works efficiently without being undersized or oversized. Is It Better to Oversize an Inverter?



How big an inverter should I use for a 24kw photovoltaic panel



[What Size Inverter Do I Need for a Solar Panel System?](#)

To help you choose the right size solar inverter and matching battery, a solar inverter size selection comparison table is provided below. This table will help you quickly ...

[WhatsApp](#)

How to Determine the Right Inverter Sizes for Your Needs

Choosing the right inverter size ensures your electrical needs are met efficiently and safely. An inverter converts direct current (DC) electricity from sources like batteries or ...

[WhatsApp](#)



[What size inverter do I need for solar panels](#)

In this post, you will learn how to determine the right inverter size tailored for your specific solar setup. Power Requirements: Assess the total wattage of all appliances you ...

[WhatsApp](#)

How do you determine what size of inverter you will need to

You use gallons of gas per miles driven You use an amount of electricity (kw) per hour. So, with that analogy, kwh is your gas tank size (how big



your battery is) and your inverter is the size of ...

[WhatsApp](#)



[calculate inverter size for solar + Sizing Formula](#)

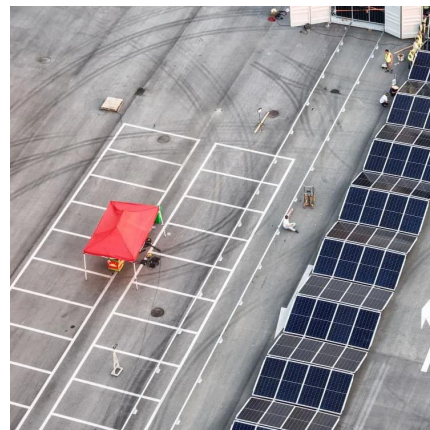
How do I determine the right size of inverter for my solar installation? To calculate the right inverter size, assess your daily energy consumption (measured in kWh) from your ...

[WhatsApp](#)

[What size inverter is best for solar panels?](#)

Different power solar panels need to choose the right inverter based on some key factors. Here is a detailed selection guide: First, you need to calculate the total power of the ...

[WhatsApp](#)



What size inverter is best for a 24kw photovoltaic power station

Most installations slightly oversize the inverter, with a ratio between 1.1-1.25 times the array capacity, to account for these considerations. The size of the solar inverter you need is directly ...

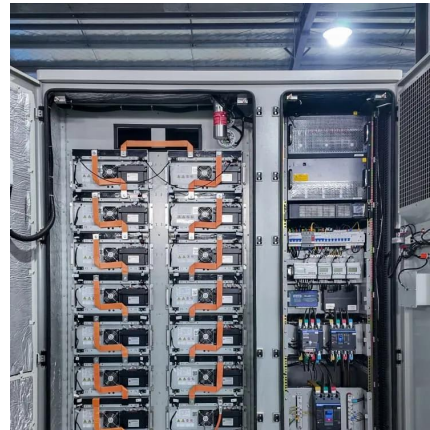
[WhatsApp](#)



[What Size Inverter For a 100W Solar Panel?](#)

With this system you can draw 100W from the inverter for 3 to 4 hours or 200W for 1 and half hours. How to Calculate Solar Inverter Size
Calculating inverter sizes is the same no matter ...

[WhatsApp](#)



[How To Size A Solar Inverter in 3 Easy Steps](#)

In this guide, we share 3 easy steps on how to size a solar inverter correctly. We explain the key concepts that determine solar inverter sizing including your power needs, the type and number ...

[WhatsApp](#)

Solar Inverters Guide: How to Size an Inverter for a Solar System?

However, a "solar panel inverter" is another essential component of a home solar energy system and plays a vital role in supplying power for use. They are mostly considered to be the brains ...

[WhatsApp](#)



Contact Us

For catalog requests, pricing, or partnerships, please visit:
<https://www.straightta.co.za>