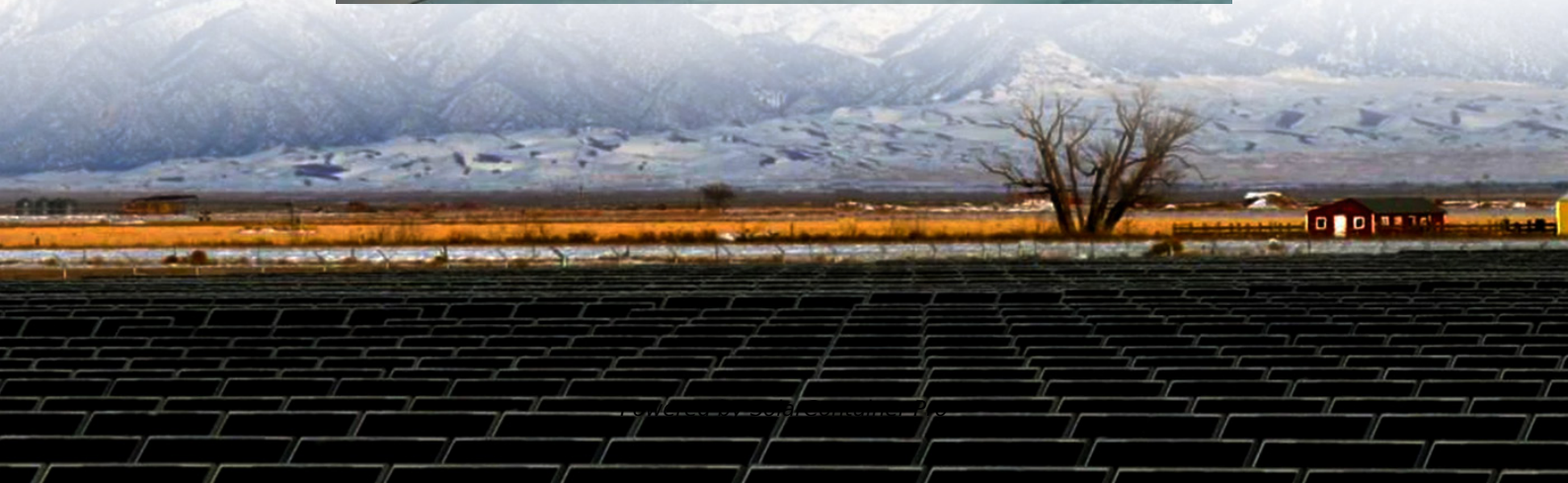


How big an inverter should I use for a 20 MW photovoltaic system





Overview

The rule of thumb is to size your inverter 1.25 bigger than your solar array. In some cases, you may need to use multiple inverters to meet your power needs or increase your system's voltage. This practice, known as inverter stacking, involves connecting multiple inverters in parallel or series. What size solar inverter do I Need?

A 4.5 kW array (or ten 450-watt solar panels) would just about cover your consumption. The type of solar panels you choose can also impact the size of the inverter you need. Different types of solar panels have different wattage ratings and efficiency levels. The three main types of solar panels are monocrystalline, polycrystalline, and thin film.

What is a solar inverter sizing calculator?

A solar inverter sizing calculator is a tool used to determine the appropriate size of a solar inverter for your solar power system based on the total power consumption of connected appliances and the size of your solar panel array. It ensures the inverter can handle the peak loads efficiently.

Should your inverter size match your solar panel size?

Match your inverter to your lifestyle, not just your roof. If you're running a fridge, home office, and PS5 all day, size accordingly. If you're barely home, go leaner. Here's the cheat code: your inverter size should usually match your solar panel system's size in kilowatts.

How do I choose a solar inverter?

When designing a solar installation, and selecting the inverter, we must consider how much DC power will be produced by the solar array and how much AC power the inverter is able to output (its power rating).

How much solar power can a 5kw inverter produce?

Under the Clean Energy Council rules for accredited installers, the solar panel



capacity can only exceed the inverter capacity by 33%. That means for a typical 5kW inverter you can go up to a maximum of 6.6kW of solar panel output within the rules.

Should a solar inverter be oversized?

However, slight over-sizing of the solar panels compared to the inverter capacity (up to 133% under certain guidelines) can sometimes yield better overall efficiency due to the variable nature of solar irradiation throughout the day. The ratio for inverter sizing often depends on specific system requirements and local regulations.



How big an inverter should I use for a 20 MW photovoltaic system



[Solar Inverter Sizing Calculator: Important Guide](#)

This comprehensive guide will walk you through solar inverter sizing, explain its importance, and help you understand how to use a solar inverter sizing calculator effectively.

[WhatsApp](#)

[Solar inverter sizing: Choose the right size inverter](#)

When designing a solar installation, and selecting the inverter, we must consider how much DC power will be produced by the solar array and how much AC power the inverter is able to ...

[WhatsApp](#)



Solar inverter size: Calculate the right size for your inverter

Inverters work most efficiently when operating near their maximum capacity and are typically sized to be roughly the same size as your solar panels. Inverters are usually sized lower than ...

[WhatsApp](#)



How many inverters are needed for a photovoltaic project

3. How do photovoltaic inverters affect the overall efficiency of a solar power system?
Photovoltaic inverters play a crucial role in solar



power system efficiency. High-quality inverters efficiently ...

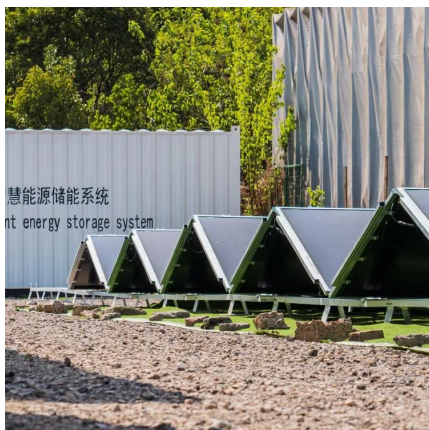
[WhatsApp](#)



How do you determine what size of inverter you will need to

You use gallons of gas per miles driven You use an amount of electricity (kw) per hour. So, with that analogy, kwh is your gas tank size (how big your battery is) and your inverter is the size of ...

[WhatsApp](#)



Solar Panel Inverter Size Calculator: Know What You Need , Angi

Solar inverters come in different sizes, and you'll need to check the output of your solar energy system to find the perfect match. This guide can serve as a solar panel inverter ...

[WhatsApp](#)



What Size Solar Inverter Do I Need? Experts Break It Down

But before you start soaking up the sun, you'll need the right inverter to match your system. This guide breaks down what size solar inverter you actually need--so your setup ...

[WhatsApp](#)

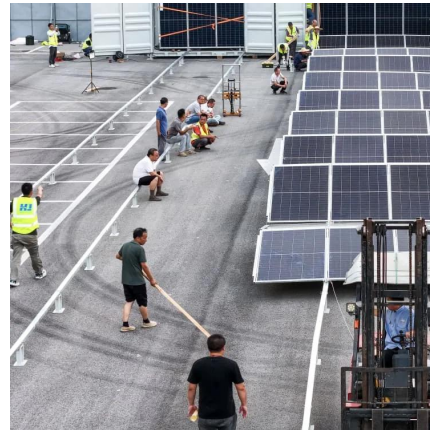




[How To Size an Inverter: Solar Inverter Sizing Explained](#)

When sizing an inverter, calculate the total wattage needed and understand surge vs. continuous power. Choose the right size with a 20% safety margin. Factor in simultaneous ...

[WhatsApp](#)



[How To Size A Solar Inverter in 3 Easy Steps](#)

In this guide, we share 3 easy steps on how to size a solar inverter correctly. We explain the key concepts that determine solar inverter sizing including your power needs, the type and number ...

[WhatsApp](#)

[calculate inverter size for solar + Sizing Formula](#)

Common sizes range between 1kW and upwards over 10kW. In order to accurately size your inverter, here is a very simple formula: projectiles. Inverter Size = Total Solar Panel ...

[WhatsApp](#)



Sizing inverters to optimise solar panel system efficiency

To calculate the required capacity for your solar inverter, sum up the total wattage of your solar panels and adjust based on expected system efficiency, shading, and the specific ...

[WhatsApp](#)



Contact Us

For catalog requests, pricing, or partnerships, please visit:
<https://www.straighta.co.za>