

How big an inverter should I use for a 150w household appliance





Overview

Before we go any further, we highly recommend that you choose a pure sine wave inverter. This type of inverter delivers high-quality electricity, similar to your utility company.

We have summarized the appliances that inverters from 300W to 3000W can run depending on their rated maximum power. Note to our readers: Use the above formula to determine.

What size inverter do I Need?

The right size inverter for your specific application depends on how much wattage your devices require. This information is usually printed somewhere on electronic devices, although it may show voltage and amperage ratings instead.

How to size a 1500 watt power inverter?

A rule-of-thumb for sizing your 1500-watt power inverter is to combine the wattage of all the devices you are planning to use at the same time (don't forget basic necessities, like lights) and give yourself 20% headroom.

How many watts can a refrigerator inverter handle?

Inverters of this size and type can consistently supply 1500 Watts of smooth AC power and can handle up to 3000 Watts for a brief moment if needed. However, depending on factors like the size, age, and power usage of your refrigerator, you might find a larger inverter necessary, or a smaller one might do the trick.

Can a 1500 watt inverter run a refrigerator?

You could run most refrigerators using a 1500-watt pure sine wave inverter. Inverters of this size and type can consistently supply 1500 Watts of smooth AC power and can handle up to 3000 Watts for a brief moment if needed.

How much power does a 150W inverter use?



A 150W inverter typically has a surge power ranging from 300-450 watts, providing you with the necessary boost to handle appliances with higher initial power requirements. Note: If you're running an appliance that requires surge wattage, make sure the surge capacity of your inverter should align with the surge wattage consumption of your load.

How much power does an inverter need?

The continuous power requirement is actually 2250 but when sizing an inverter, you have to plan for the start up so the inverter can handle it. Third, you need to decide how long you want to run 2250 watts. Let's say you would like to power these items for an eight-hour period.



How big an inverter should I use for a 150w household appliance



Find the Right Inverter Size: How Big An Inverter Do You need?

How Much Power Is Enough for an Inverter? The right size inverter for your specific application depends on how much wattage your devices require. This information is ...

[WhatsApp](#)

What Appliances Will a 2000 Watt Inverter Run? - leaptrend

A 2000-watt power inverter unlocks off-grid power for essential appliances--but knowing its real-world limits prevents frustrating overload shutdowns or damaged devices. ...

[WhatsApp](#)



[How to Size an Inverter and UPS for Home Appliances?](#)

To do this, we need to find the suitable size of inverter and batteries based on the required load in watts. A power inverter is always rated in VA (Volt-Amps), but we assume its rating in watts ...

[WhatsApp](#)

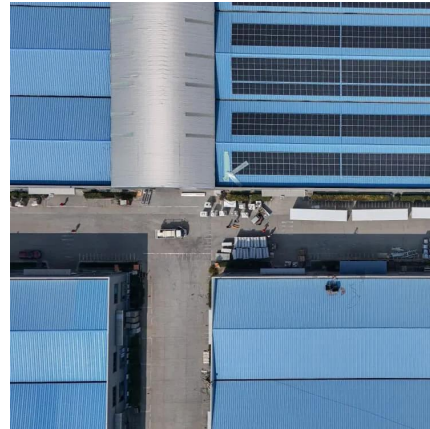
[What Size Inverter Do I Need for a 200Ah Battery?](#)

To size an inverter for a 200Ah battery, calculate the total wattage of devices you plan to run. Choose an inverter rated at least twice your total



wattage; for example, if your ...

[WhatsApp](#)



[What Size Inverter do I Need? \[with Examples\]](#)

Sizing an inverter is very simple, as long as you know how much power do you exactly need. If you think that at some point you will be plugging in more devices, consider that as well and ...

[WhatsApp](#)



Choosing the Right Size Inverter for Your Coffee Maker: A ...

To determine the right size inverter for your coffee maker, you need to know the wattage of the appliance. Most standard coffee makers range from 600 to 1200 watts.

[WhatsApp](#)



[Power Play: How Big an Inverter Do You Need to Run a ...](#)

To determine how big an inverter you need, you must first assess your refrigerator's power requirements. You can find the power consumption of your refrigerator in the user manual or ...

[WhatsApp](#)





What Size Power Inverter Is Needed for a House [Full Guide]

In general, a 3000W to 5000W inverter works well for most homes, but the exact size depends on factors like household appliances, total power consumption, and battery ...

[WhatsApp](#)



[What Can A 150W Inverter Run? \(Explained!\)](#)

If you're looking to power your small AC appliances during camping trips or in any other situation, you can rely on a 150W inverter. In this guide, I will explain what does 150 watt ...

[WhatsApp](#)

Contact Us

For catalog requests, pricing, or partnerships, please visit:
<https://www.straightta.co.za>