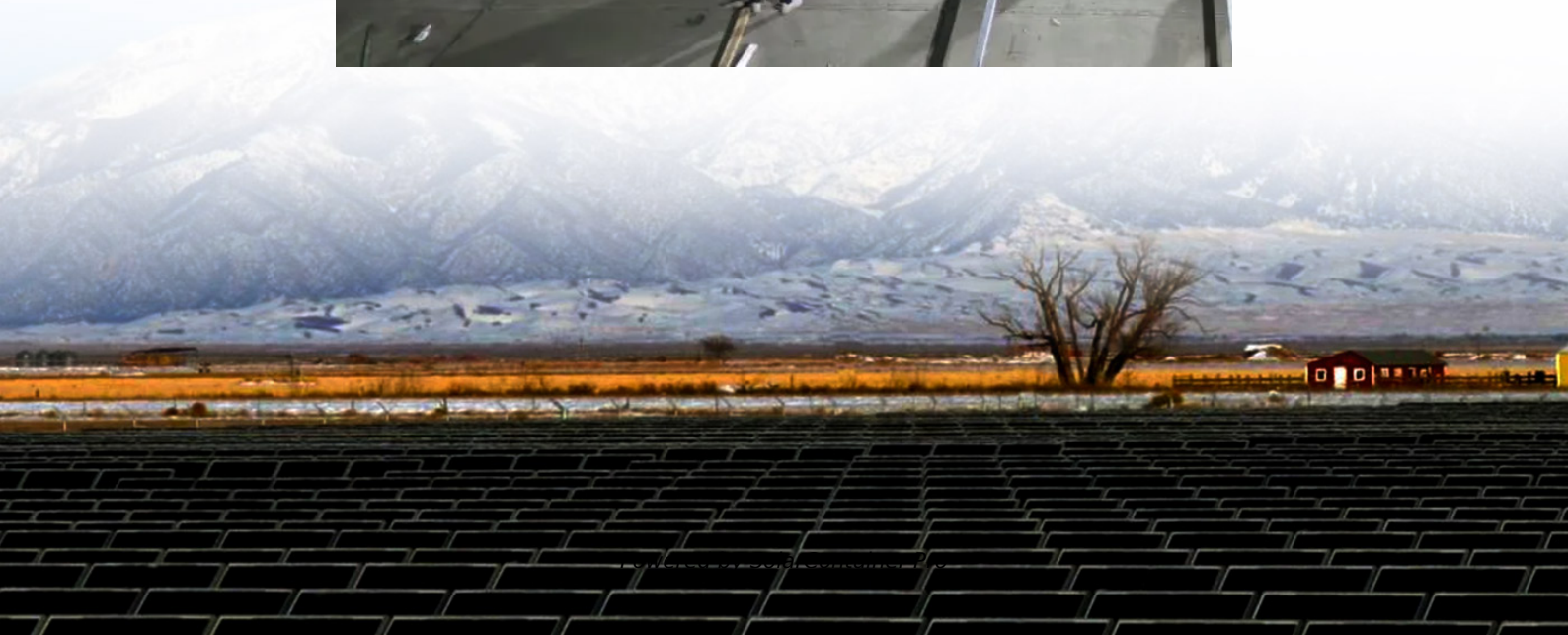


# **How big an inverter should I use for a 1500kw motor**





## Overview

---

The calculation for the required inverter size is done using the following formula:  $\text{Inverter Size (W)} = (\text{Total Wattage} \times \text{Safety Factor}) \div \text{Inverter Efficiency}$  This ensures that the inverter can handle both the load and the efficiency losses. How do I choose the right inverter size?

Here is our last bit of advice on how to select the correct inverter size: Check our inverter size chart. List all your appliances in the function of their power output. Apply our inverter size formula. Do not exceed 85% of your inverter's maximum power continuously. Oversize your inverter for extra appliances in the future.

How much power does an inverter need?

The continuous power requirement is actually 2250 but when sizing an inverter, you have to plan for the start up so the inverter can handle it. Third, you need to decide how long you want to run 2250 watts. Let's say you would like to power these items for an eight-hour period.

What is the inverter size calculator?

The Inverter Size Calculator is a valuable tool for determining the appropriate inverter size based on your power needs and electrical load. It is widely used in selecting inverters for residential, commercial, and solar applications, ensuring that the inverter's capacity matches the required energy demands efficiently.

What are the different solar inverter sizes?

Solar generators range in size from small generators for short camping trips to large off-grid power systems for a boat or house. Consequently, inverter sizes vary greatly. During our research, we discovered that most inverters range in size from 300 watts up to over 3000 watts. In this article, we guide you through the different inverter sizes.

How to choose a power inverter?



Second, select an inverter. For this example, you will need a power inverter capable of handling 4500 watts. The continuous power requirement is actually 2250 but when sizing an inverter, you have to plan for the start up so the inverter can handle it. Third, you need to decide how long you want to run 2250 watts.

What type of Inverter should I use for a motor load?

Whenever possible, we recommend using the low-frequency transformer isolated GS or Classic Series models for motor loads. The formula to use for all inverters which are to power motor loads is: Inverter's output AC voltage multiplied by Locked Rotor Current of motor load equals minimum rating of inverter in VA.



## How big an inverter should I use for a 1500kw motor

---



### [How To Size A Solar Inverter in 3 Easy Steps](#)

In this guide, we share 3 easy steps on how to size a solar inverter correctly. We explain the key concepts that determine solar inverter sizing including your power needs, the type and number ...

[WhatsApp](#)

### [Frequently Asked Questions about Inverters](#)

Larger inverters, from 1500 W upwards, need twice that size. Inverters used in high ambient temperatures, and those expected to be operating at full capacity for a long period, require ...

[WhatsApp](#)



### [How Big Of an Inverter Can My Car Handle . Expert Guide](#)

The inverter is the device that converts power from battery-powered electronics to the voltage used by your car (120 volts). The greater wattage an inverter can handle, the more devices ...

[WhatsApp](#)

### **Inverter Size Calculator [Power Inverter, AC, DC, Solar Inverter]**

To calculate the size of an inverter, multiply the total wattage of connected devices by a safety factor, then divide by the inverter's efficiency.





The Inverter Size Calculator helps ...

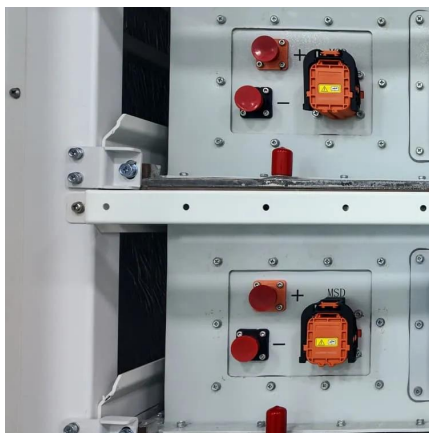
[WhatsApp](#)



### [Recommended Inverter Cable, Breaker & Fuse Sizing](#)

Determine what size inverter-to-battery cables and DC breaker (or fuse) you should use with an off-grid inverter to install and operate it safely. Use this table to decide what size and to use ...

[WhatsApp](#)



### **Inverter Wire Size Explained: An Easy Guide for Beginners**

In the modern electrical world, especially when installing renewable energy systems such as solar panels, selecting the correct inverter wire size is essential. The correct cable size for an ...

[WhatsApp](#)



### **Selecting the Proper Inverter / Frequency Converter for your**

In effect, the tradeoff for utilizing a lightweight, compact high frequency topology inverter is the requisite higher ratio between the power rating of the inverter and the power rating of the load.

[WhatsApp](#)

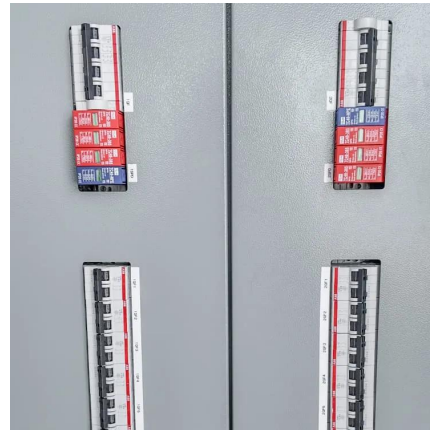




### [The Only Inverter Size Chart You'll Ever Need](#)

Learn how to calculate the required size of an inverter with our in-depth guide. We provide a handy formula, examples, and answers to common questions to help you make the right ...

[WhatsApp](#)



### **What Size Power Inverter Is Needed for a House [Full Guide]**

In general, a 3000W to 5000W inverter works well for most homes, but the exact size depends on factors like household appliances, total power consumption, and battery ...

[WhatsApp](#)

### [What Size Inverter Can I Run Off a 100Ah Battery? A ...](#)

When selecting an inverter to pair with a 100Ah battery, it's crucial to understand the power requirements of your appliances and the capabilities of your inverter. The right ...

[WhatsApp](#)



### [Can I Use an Inverter to Run a Heater?](#)

A 2000W heater is ideal for a 1500W inverter. A 1500W inverter is enough on paper, but due to inverter inefficiency you should opt for 2000 watts., Plus you will want more power in case of a ...

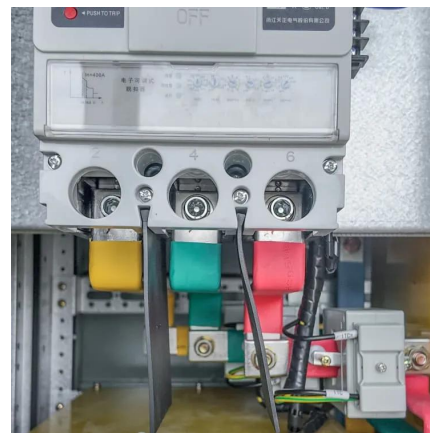
[WhatsApp](#)



### [What Size Inverter You Need \(Calculations + Battery\)](#)

Inverters are made with different power capacities, depending on the size of the system you want to run. For this discussion, we are looking at a domestic inverter that you can ...

[WhatsApp](#)



## Contact Us

---

For catalog requests, pricing, or partnerships, please visit:  
<https://www.straighta.co.za>