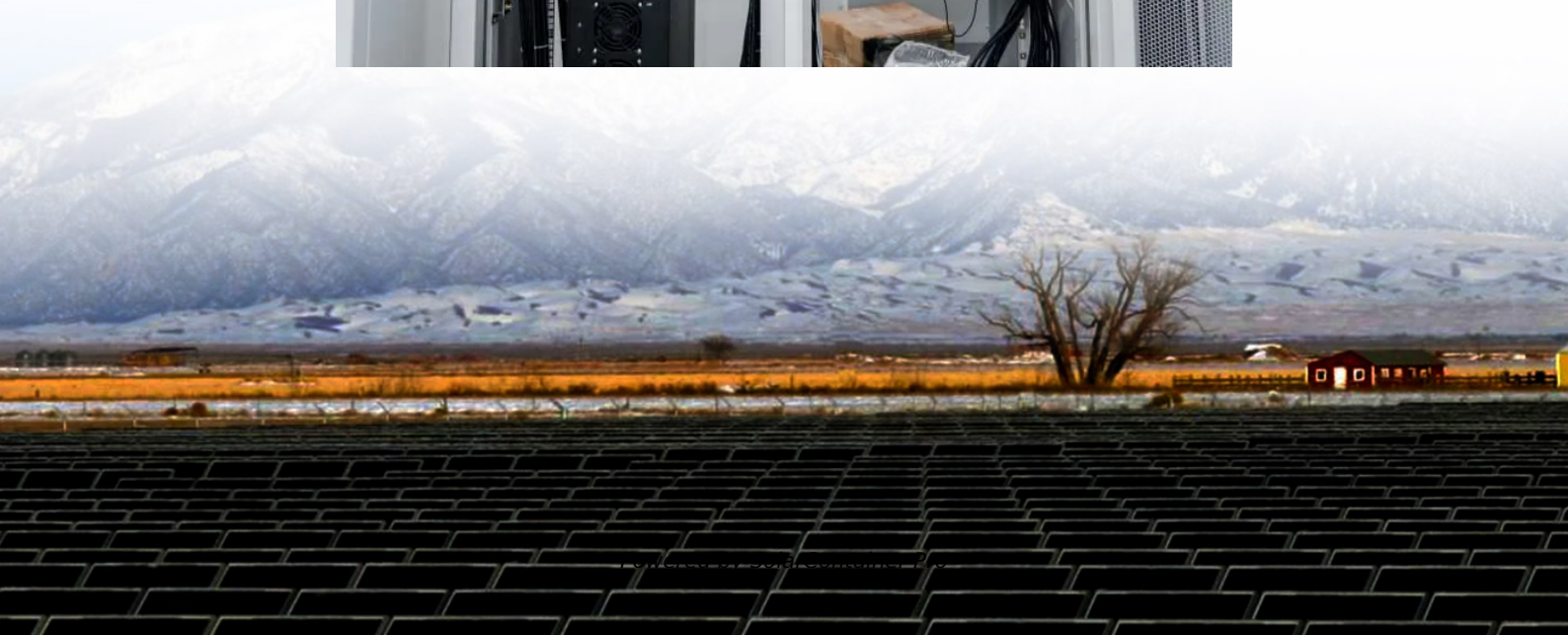


# **How big an inverter should I use for 4500W power**





## Overview

---

Before we go any further, we highly recommend that you choose a pure sine wave inverter. This type of inverter delivers high-quality electricity, similar to your utility company.

We have summarized the appliances that inverters from 300W to 3000W can run depending on their rated maximum power. Note to our readers: Use the above formula to determine.

The rule of thumb is to size your inverter 1.25 bigger than your solar array. In some cases, you may need to use multiple inverters to meet your power needs or increase your system's voltage. This practice, known as inverter stacking, involves connecting multiple inverters in parallel or series. Do I need an inverter size chart?

The need for an inverter size chart first became apparent when researching our DIY solar generator build. Solar generators range in size from small generators for short camping trips to large off-grid power systems for a boat or house. Consequently, inverter sizes vary greatly.

How to calculate inverter size?

Using the Inverter Size Calculator is quick and easy. You'll need three inputs: Total Wattage (W): This is the total power consumption of all the appliances or devices you plan to run through the inverter. Safety Factor: A multiplier to ensure some buffer above your actual power requirement. Typically ranges from 1.1 to 1.5.

What size cable do I need for a 3500W inverter?

For inverters rated up to 3500W, the cable size should be 1/0 AWG, sufficient to handle the startup and continuous current required. Another consideration is the inline fuse, as this will protect both sides of the system in the event of a shortage in the system. To ascertain the fuse you need, divide the AC wattage by the DC Voltage.

What wattage should an inverter have?



Continuous wattage is the most important number to consider as this is the power the inverter can deliver for a prolonged period of time. Peak wattage is designed so an inverter can cope with surges in power for a few seconds. It won't last more than 5 to 10 seconds.

How big should a solar inverter be?

Choose wisely. Here's the cheat code: your inverter size should match your solar panel output. If your system pushes 5,000 watts, a 5,000-watt (or 5 kW) inverter is usually the move. But it's not always one-to-one. Some setups undersize the inverter a bit—say, 4.6 kW for 5 kW of panels—to save cash without losing much power.

Should I use an inverter with a larger capacity?

It's important to always use an inverter with a larger capacity than your required power. This is because they are not completely efficient as they lose energy during the DC to AC conversion, plus require energy for internal systems. Often inverters are between 85% and 95% efficient. So you should factor this into your final number.



## How big an inverter should I use for 4500W power

---



### [Inverter Size Chat: What Size Inverter Do I Need?](#)

That's why I've put together a handy inverter size chart in order for you to quickly find out what size inverter is best for your needs. We'll start by going through the basic considerations, use ...

[WhatsApp](#)

### **What Size Solar Inverter Do I Need? Experts Break It Down**

But before you start soaking up the sun, you'll need the right inverter to match your system. This guide breaks down what size solar inverter you actually need--so your setup ...

[WhatsApp](#)



### **Choosing the Right Inverter: What Size Inverter Do I Need?**

To determine the appropriate size, you can calculate the combined wattages of the items you plan to run using the inverter. For example, if you want to power a refrigerator (600 ...

[WhatsApp](#)



### [What Size Inverter You Need \(Calculations + Battery\)](#)

Inverters are made with different power capacities, depending on the size of the system you want to run. For this discussion, we are





looking at a domestic inverter that you can ...

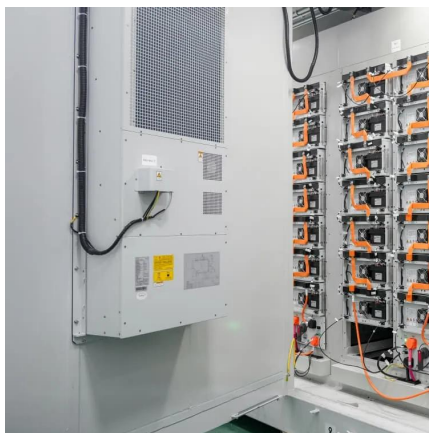
[WhatsApp](#)



### What Size Power Inverter Is Needed for a House [Full Guide]

In general, a 3000W to 5000W inverter works well for most homes, but the exact size depends on factors like household appliances, total power consumption, and battery ...

[WhatsApp](#)



### Find the Right Inverter Size: How Big An Inverter Do You need?

When it comes to powering your devices through an inverter, one of the most critical aspects to consider is size--how big an inverter do you need? Whether you're on an ...

[WhatsApp](#)



### [How To Size A Solar Inverter in 3 Easy Steps](#)

Choose an inverter that has a surge watt rating equal to or greater than this value. As for voltage drop, check the wire length between your solar panels and the batteries. If the wire length is ...

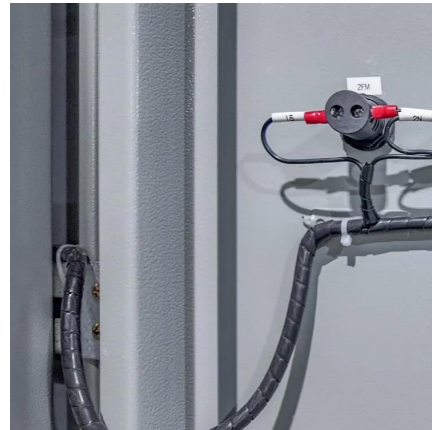
[WhatsApp](#)



## Frequently Asked Questions About Power Inverters , DonRowe

Power Inverter FAQ Frequently Asked Questions about Power Inverters What does a power inverter do, and what can I use one for? Using an inverter for basic emergency home backup ...

[WhatsApp](#)



## Contact Us

---

For catalog requests, pricing, or partnerships, please visit:  
<https://www.straighta.co.za>