

How big an inverter is needed for 2KW





Overview

Before we go any further, we highly recommend that you choose a pure sine wave inverter. This type of inverter delivers high-quality electricity, similar to your utility company. This way, none of your appliances run the risk of being damaged. Now, when it comes to sizing your inverter, you always need to check.

We have summarized the appliances that inverters from 300W to 3000W can run depending on their rated maximum power. Note to our readers: Use the above formula to determine.

The calculation for the required inverter size is done using the following formula: $\text{Inverter Size (W)} = (\text{Total Wattage} \times \text{Safety Factor}) \div \text{Inverter Efficiency}$ This ensures that the inverter can handle both the load and the efficiency losses. What size inverter do I Need?

Inverters come in different sizes starting from as little as 125 watts. The typical inverter sizes used for residential and commercial applications are between 1 and 10kW with 3 and 5kW sizes being the most common. With such an array of options, how do you find the right size for you?

An inverter works best when close to its capacity.

What are the different solar inverter sizes?

Solar generators range in size from small generators for short camping trips to large off-grid power systems for a boat or house. Consequently, inverter sizes vary greatly. During our research, we discovered that most inverters range in size from 300 watts up to over 3000 watts. In this article, we guide you through the different inverter sizes.

What is the inverter size calculator?

The Inverter Size Calculator is a valuable tool for determining the appropriate inverter size based on your power needs and electrical load. It is widely used in selecting inverters for residential, commercial, and solar applications, ensuring that the inverter's capacity matches the required energy demands efficiently.



Should your inverter size match your solar panel size?

Match your inverter to your lifestyle, not just your roof. If you're running a fridge, home office, and PS5 all day, size accordingly. If you're barely home, go leaner. Here's the cheat code: your inverter size should usually match your solar panel system's size in kilowatts.

How much power does an inverter need?

The continuous power requirement is actually 2250 but when sizing an inverter, you have to plan for the start up so the inverter can handle it. Third, you need to decide how long you want to run 2250 watts. Let's say you would like to power these items for an eight-hour period.

How much power does a 5 kW inverter use?

If your system pushes 5,000 watts, a 5,000-watt (or 5 kW) inverter is usually the move. But it's not always one-to-one. Some setups undersize the inverter a bit—say, 4.6 kW for 5 kW of panels—to save cash without losing much power. It's a balancing act between cost, performance, and when you actually use electricity.



How big an inverter is needed for 2KW



[What Size Inverter Is Best for Running a Geyser?](#)

What Size Inverter Will Run My Geyser? To run a geyser efficiently, you need an inverter that can handle the power draw of your specific model. Here's a guideline to help you choose the right ...

[WhatsApp](#)

Is my inverter too big? : r/SolarDIY

Hi. So, your inverter can technically be run off a single battery; but you need large cables between the battery and inverter due to the large current it can draw. You are your battery to make sure ...

[WhatsApp](#)



Solar Panel Inverter Size Calculator: Know What You Need , Angi

Solar inverters come in different sizes, and you'll need to check the output of your solar energy system to find the perfect match. This guide can serve as a solar panel inverter ...

[WhatsApp](#)



[Will an Inverter Run a Portable Air Conditioner?](#)

During summer, a portable air conditioner becomes a necessity for most of us. A portable AC is ideal for an off grid system since it consumes less power than a central AC. But what



inverter ...

[WhatsApp](#)



[How to calculate battery capacity for inverter systems](#)

To find out how many batteries for your inverter. The rule is "maximize run time, minimize the battery size and cost." The formula is : Battery Capacity (WH)*Discharge ...

[WhatsApp](#)



[Calculate Battery Size for Inverter Calculator](#)

The Calculate Battery Size for Inverter Calculator helps you determine the optimal battery capacity needed to support your inverter system. By inputting critical parameters such ...

[WhatsApp](#)



[What Inverter Size Do I Need to Run a Kettle?](#)

Most kettles need 800 to 1000 watts to run, with higher capacity models requiring more than 2000 watts. To get the right inverter size, use this simple formula: Total kettle watts + 20% = inverter ...

[WhatsApp](#)

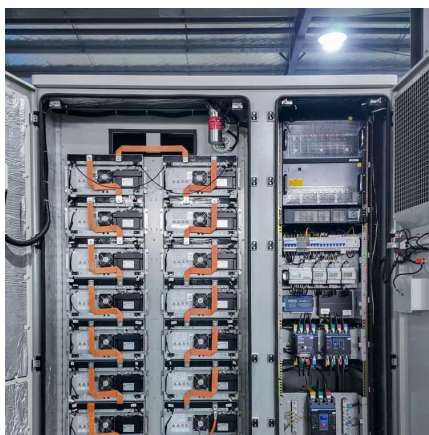




[How To Size A Solar Inverter in 3 Easy Steps](#)

Learn how to calculate the required size of an inverter with our in-depth guide. We provide a handy formula, examples, and answers to common questions to help you make the right ...

[WhatsApp](#)



[How To Size A Solar Inverter in 3 Easy Steps](#)

In this guide, we share 3 easy steps on how to size a solar inverter correctly. We explain the key concepts that determine solar inverter sizing including your power needs, the type and number ...

[WhatsApp](#)

[What Size Inverter Do I Need for a Solar Panel System?](#)

To help you choose the right size solar inverter and matching battery, a solar inverter size selection comparison table is provided below. This table will help you quickly ...

[WhatsApp](#)



How to Choose the Right Size Solar Inverter: Step-by-Step with ...

This guide walks you through calculating inverter size based on panel capacity, power usage, and safety margins. We use real examples from installations in Texas and ...

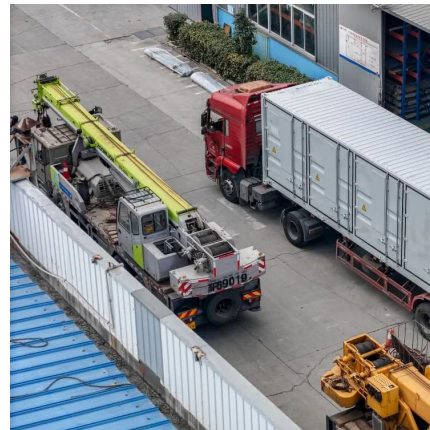
[WhatsApp](#)



Inverter Size Calculator [Power Inverter, AC, DC, Solar Inverter]

Calculate the ideal inverter size with the Inverter Size Calculator. Perfect for selecting inverters for homes, solar panels, or vehicles based on power requirements.

[WhatsApp](#)



[What Size Inverter Do You Need to Run a Refrigerator?](#)

But what size inverter do you really need to run a refrigerator efficiently? In this article, we will explore the different factors that come into play when determining the ...

[WhatsApp](#)

[Solar Panel Inverter Size Calculator Tool](#)

A solar panel inverter size calculator is a valuable tool that allows us to determine the optimal size of an inverter for our solar panel system. By using specific data, such as the ...

[WhatsApp](#)





[How To Size an Inverter: Solar Inverter Sizing Explained](#)

When sizing an inverter, calculate the total wattage needed and understand surge vs. continuous power. Choose the right size with a 20% safety margin. Factor in simultaneous ...

[WhatsApp](#)

Contact Us

For catalog requests, pricing, or partnerships, please visit:
<https://www.straighta.co.za>