

# How big an inverter do I need for 60 panels





## Overview

---

Before we go any further, we highly recommend that you choose a pure sine wave inverter. This type of inverter delivers high-quality electricity, similar to your utility company. This way, none of your appliances run the risk of being damaged. Now, when it comes to sizing your inverter, you always need to check.

We have summarized the appliances that inverters from 300W to 3000W can run depending on their rated maximum power. Note to our readers: Use the above formula to determine.

What size solar inverter do I Need?

A 4.5 kW array (or ten 450-watt solar panels) would just about cover your consumption. The type of solar panels you choose can also impact the size of the inverter you need. Different types of solar panels have different wattage ratings and efficiency levels. The three main types of solar panels are monocrystalline, polycrystalline, and thin film.

Should your inverter size match your solar panel size?

Match your inverter to your lifestyle, not just your roof. If you're running a fridge, home office, and PS5 all day, size accordingly. If you're barely home, go leaner. Here's the cheat code: your inverter size should usually match your solar panel system's size in kilowatts.

Do I need an inverter size chart?

The need for an inverter size chart first became apparent when researching our DIY solar generator build. Solar generators range in size from small generators for short camping trips to large off-grid power systems for a boat or house. Consequently, inverter sizes vary greatly.

How do I size an inverter?

To accurately size the inverter, I must calculate the total wattage needed, factoring in both running watts and surge requirements of the devices. Adding a safety margin of 20 % ensures that the inverter can handle unexpected



power spikes without overloading.

How to choose a solar inverter?

Choose an inverter that has a surge watt rating equal to or greater than this value. As for voltage drop, check the wire length between your solar panels and the batteries. If the wire length is long, you may need to choose a lower voltage system (12V, 24V, or 48V) to minimize voltage drop.

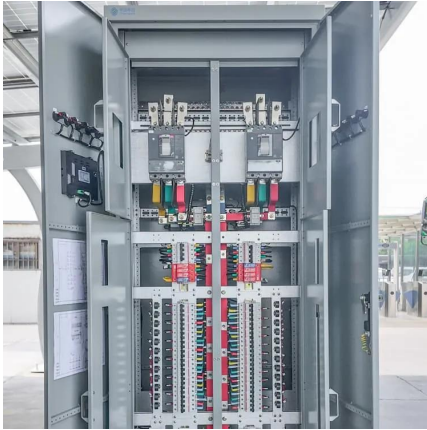
How much power does an inverter need?

The continuous power requirement is actually 2250 but when sizing an inverter, you have to plan for the start up so the inverter can handle it. Third, you need to decide how long you want to run 2250 watts. Let's say you would like to power these items for an eight-hour period.



## How big an inverter do I need for 60 panels

---



### What Size Solar Inverter Do I Need? Experts Break It Down

But before you start soaking up the sun, you'll need the right inverter to match your system. This guide breaks down what size solar inverter you actually need--so your setup ...

[WhatsApp](#)

### [What Inverter Size Do I Need to Run a Kettle?](#)

Most kettles need 800 to 1000 watts to run, with higher capacity models requiring more than 2000 watts. To get the right inverter size, use this simple formula: Total kettle watts + 20% = inverter ...

[WhatsApp](#)



### [What Size Inverter You Need \(Calculations + Battery\)](#)

Inverters are made with different power capacities, depending on the size of the system you want to run. For this discussion, we are looking at a domestic inverter that you can ...

[WhatsApp](#)



### What Size Solar Inverter Do I Need? A Quick Sizing Guide

This guide will walk you through an easy, step-by-step process to accurately size your inverter, avoid common pitfalls, and highlight how our





Lefor Solar Inverter Series can fit your specific ...

[WhatsApp](#)



### How to Choose the Right Size Solar Inverter: Step-by-Step with ...

Wondering what size solar inverter do I need for your solar system? This guide walks you through calculating inverter size based on panel capacity, power usage, and safety ...

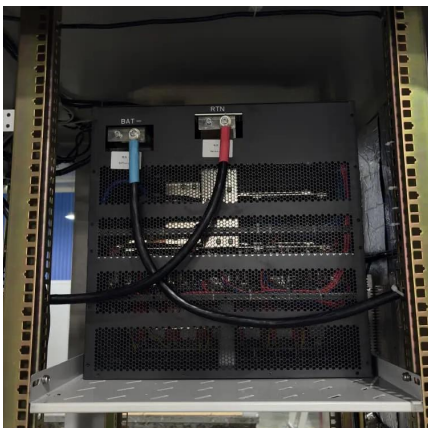
[WhatsApp](#)



### [How To Size an Inverter: Solar Inverter Sizing Explained](#)

When sizing an inverter, calculate the total wattage needed and understand surge vs. continuous power. Choose the right size with a 20% safety margin. Factor in simultaneous ...

[WhatsApp](#)



### [What Size Inverter For a 100W Solar Panel?](#)

Mention the word inverter and we think of those devices that allow AC devices to run off solar panels. Mostly they are used in large solar arrays, but can you use an inverter with a 100 watt ...

[WhatsApp](#)



### [calculate inverter size for solar + Sizing Formula](#)

Common sizes range between 1kW and upwards over 10kW. In order to accurately size your inverter, here is a very simple formula:  
projectiles. Inverter Size = Total Solar Panel ...

[WhatsApp](#)



### **What Size Solar Panel Do I Need to Charge a 12v Battery?**

How many solar panels you need to charge a 12v battery? Calculating the number of solar panels for your 12V battery depends on understanding your specific energy requirements. Solar ...

[WhatsApp](#)

## **Contact Us**

---

For catalog requests, pricing, or partnerships, please visit:  
<https://www.straighta.co.za>