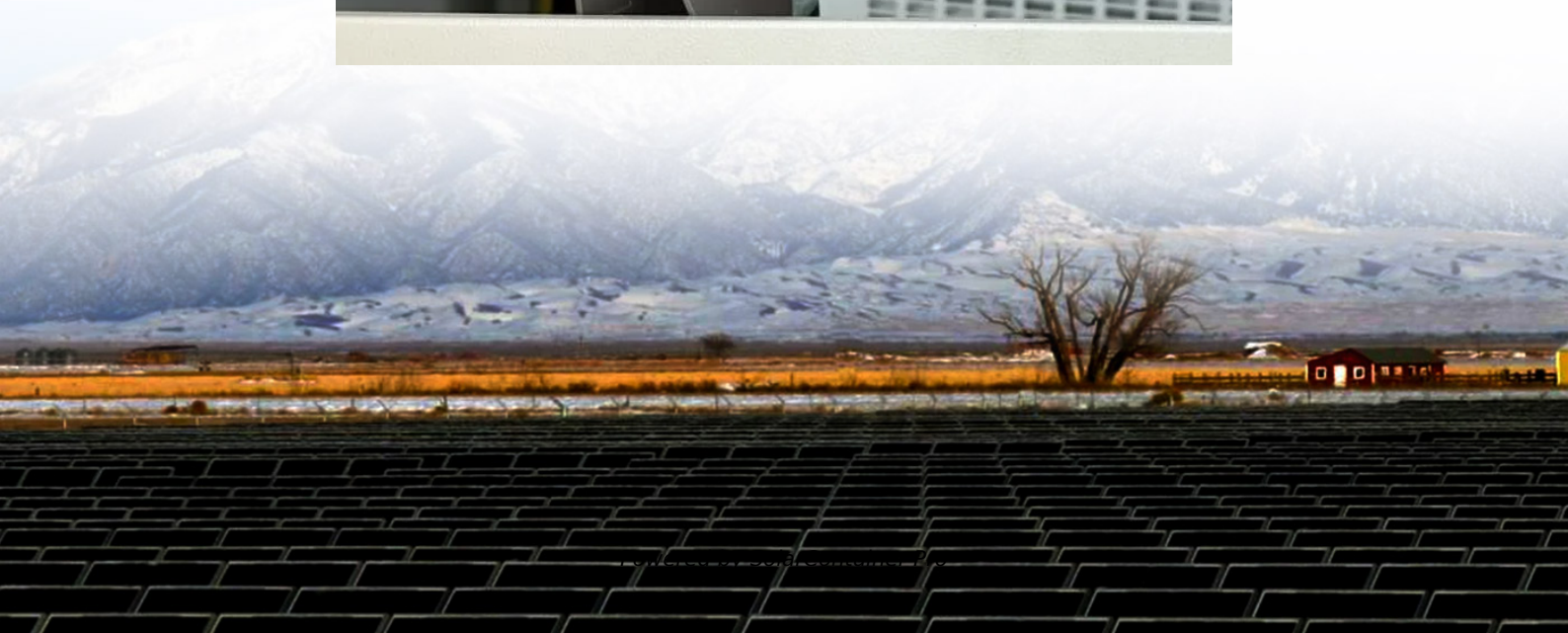
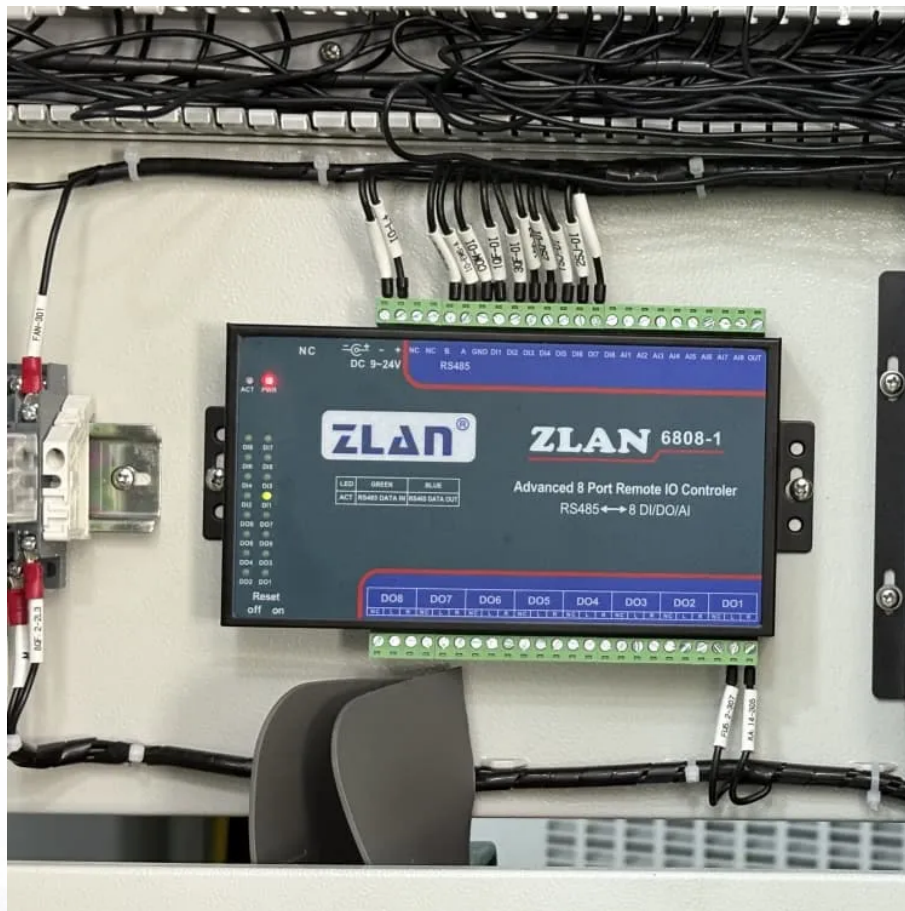


# How big an inverter can solar power supply





## Overview

---

The typical inverter sizes used for residential and commercial applications are between 1 and 10kW with 3 and 5kW sizes being the most common. With such an array of options, how do you find the right size for you?

An inverter works best when close to its capacity. What are the different solar inverter sizes?

Solar generators range in size from small generators for short camping trips to large off-grid power systems for a boat or house. Consequently, inverter sizes vary greatly. During our research, we discovered that most inverters range in size from 300 watts up to over 3000 watts. In this article, we guide you through the different inverter sizes.

What size inverter do I Need?

Inverters come in different sizes starting from as little as 125 watts. The typical inverter sizes used for residential and commercial applications are between 1 and 10kW with 3 and 5kW sizes being the most common. With such an array of options, how do you find the right size for you?

An inverter works best when close to its capacity.

Should your inverter size match your solar panel size?

Match your inverter to your lifestyle, not just your roof. If you're running a fridge, home office, and PS5 all day, size accordingly. If you're barely home, go leaner. Here's the cheat code: your inverter size should usually match your solar panel system's size in kilowatts.

How many watts a solar inverter do I Need?

A 200 watt portable unit such as the NDDI Direct Power Inverter will be sufficient for that. If you are going to run an air conditioner or a refrigerator in your RV, a more powerful inverter and battery are required. Ready to size your solar system the smart way?



How do I choose a solar inverter?

When designing a solar installation, and selecting the inverter, we must consider how much DC power will be produced by the solar array and how much AC power the inverter is able to output (its power rating).

Do you need a solar inverter?

The inverter is one of the most important components of a home or portable solar power system. Solar panels produce DC electricity, but you need an inverter to convert DC power into 120/220 volt AC electricity, Only after conversion can home appliances and other devices use it.



## How big an inverter can solar power supply

---



### [How To Size an Inverter: Solar Inverter Sizing Explained](#)

When sizing an inverter, calculate the total wattage needed and understand surge vs. continuous power. Choose the right size with a 20% safety margin. Factor in simultaneous ...

[WhatsApp](#)

### [What Inverter Size Do I Need to Run an Air Compressor?](#)

An air compressor is a versatile device that can be used to inflate tires and supply air pressure for various building projects and tools in workshops and garages. Usually they run on electricity or ...

[WhatsApp](#)



### **How to Correctly Calculate Solar Panel, Inverter, Battery Charger**

The following page demonstrates, using calculations, how to properly pick and connect the solar panel, inverter, and charger controller combinations to achieve the best ...

[WhatsApp](#)

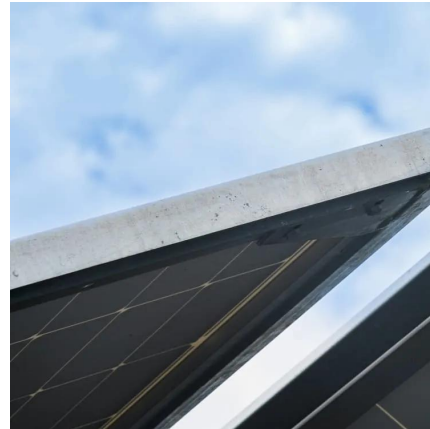
### [What Inverter Size Do I Need to Run a Kettle?](#)

To get the right inverter size, use this simple formula: Total kettle watts + 20% = inverter size  
If your kettle uses 800 watts, it needs a 1000 watt inverter. A good choice would be the Krieger



...

[WhatsApp](#)



### **Find The Right Inverter Size: How Big An Inverter Do You Need?**

The Importance of Choosing the Right Inverter Size When it comes to setting up a solar power system or using an inverter for backup power, choosing the right inverter size is of ...

[WhatsApp](#)



### **[Advice on selecting an inverter - Sinetech](#)**

How long can I run the appliances from the inverter? This depends on the battery size selected and the type of batteries used. Deep cycle (marine/solar) batteries generally have the highest ...

[WhatsApp](#)



### **Solar inverter size: Calculate the right size for your inverter**

Inverters work most efficiently when operating near their maximum capacity and are typically sized to be roughly the same size as your solar panels. Inverters are usually sized lower than ...

[WhatsApp](#)

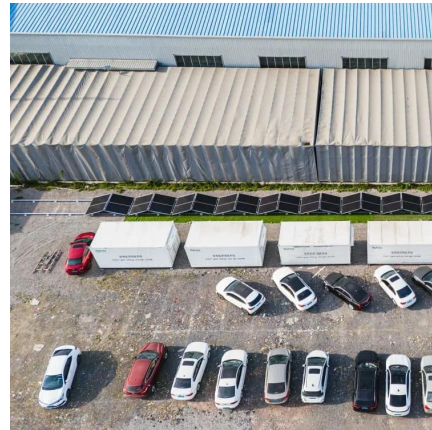




### [What Inverter Size for Well Pump to Use?](#)

It is comparable to running an air condition on solar, so make sure your inverter can handle its requirements before proceeding. To calculate what inverter your well pump needs: total surge ...

[WhatsApp](#)



### **How to Choose the Right Size Solar Inverter: Step-by-Step with ...**

Wondering what size solar inverter do I need for your solar system? This guide walks you through calculating inverter size based on panel capacity, power usage, and safety ...

[WhatsApp](#)

### [Solar inverter sizing: Choose the right size inverter](#)

When designing a solar installation, and selecting the inverter, we must consider how much DC power will be produced by the solar array and how much AC power the inverter is able to ...

[WhatsApp](#)



### **What Size Inverter Do I Need for Camping? (Including Examples)**

Discover the perfect inverter size for your next camping adventure. Learn how to calculate your power needs, choose between pure and modified sine wave inverters, and explore practical ...

[WhatsApp](#)



### **How do you properly size an inverter for a house? : r/solar**

Discussion of solar photovoltaic systems, modules, the solar energy business, solar power production, utility-scale, commercial rooftop, residential, off-grid systems and more. Solar ...

[WhatsApp](#)



## **Contact Us**

---

For catalog requests, pricing, or partnerships, please visit:  
<https://www.straighta.co.za>