

How big an inverter can a lithium battery use





Overview

Can a lithium battery run a large inverter?

Bottom line, if you want to run large inverter loads above 1000w on a lithium battery, make sure you choose an lithium battery that is designed for larger inverters or a system that can be paralleled safely with active balancing between the connected batteries.

What is a lithium battery for inverter?

Lithium offers unmatched performance, a longer lifespan, and better efficiency than traditional batteries. Whether you're setting up a home backup system, solar power solution, or mobile energy unit, this guide will walk you through everything you need to know about lithium batteries for inverters. Part 1.

How do I choose a lithium battery for inverter use?

When selecting a lithium battery for inverter use, it is essential to understand the key specifications: Voltage (V): Most inverter systems use 12V, 24V, or 48V batteries. Higher voltage systems are more efficient for larger power loads. Capacity (Ah or Wh): Amp-hours or Watt-hours indicate how much energy the battery can store and deliver.

Can a 1000 watt inverter run a 100 Ah lithium battery?

In reality, factors such as inverter efficiency and battery discharge characteristics might affect the actual run time. When pairing a 100 Ah lithium battery with a 1000 watt inverter, it is crucial to ensure compatibility to achieve optimal performance.

What voltage should a 12V inverter run on?

The input voltage of the inverter should match the battery voltage. (For example 12v battery for 12v inverter, 24v battery for 24v inverter and 48v battery for 48v inverter Summary What Will An Inverter Run & For How Long?

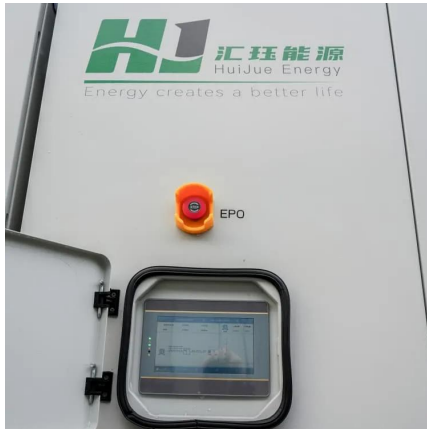


How do I choose the right inverter size for my 200Ah lithium battery?

When it comes to choosing the right inverter size for your 200Ah lithium battery, there are a few factors you'll need to consider. The first is the power needs of the devices you plan on running off the inverter. Take into account their wattage requirements and how many devices will be connected at once.



How big an inverter can a lithium battery use



Can You Use A Noco 10 Battery Charger While Connected To An Inverter?

1 day ago· The NOCO Genius 10 is ideal for pairing with inverters due to its advanced microprocessor control, which prevents overcharging. Its 10-amp output efficiently charges ...

[WhatsApp](#)

Inverter Sizing: Can Your Inverter Be Too Big For Your Battery ...

Using an inverter that is too large for the battery bank can lead to inefficient performance and reduced battery lifespan. An oversized inverter may draw more power than ...

[WhatsApp](#)



[Can an Inverter Be Too Big for Your Battery System?](#)

A 48V 100Ah lithium battery (4.8kWh) paired with a 5000W inverter works because $48V \times 100Ah \times 1C = 4800W$. Always account for inverter efficiency losses (typically 85-95%).

[WhatsApp](#)



What is the max inverter size I can use with a 100Ah lithium battery?

For a 12V 100Ah battery, a 1000W inverter is a good choice, balancing performance and efficiency. It allows about 80% of the battery's



capacity to be used effectively while ...

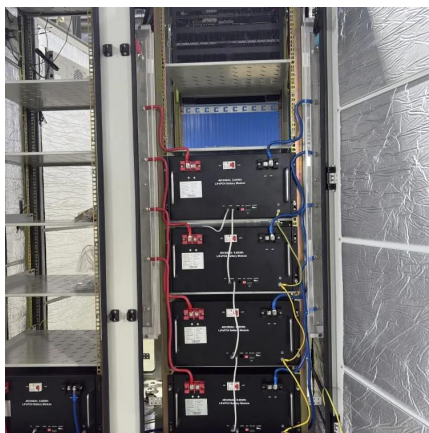
[WhatsApp](#)



[Can a Battery Be Too Big for an Inverter?](#)

Yes, a battery can be too big for an inverter. If the battery capacity exceeds the inverter's specifications, it may lead to inefficiencies, potential damage, or failure to operate ...

[WhatsApp](#)



Lithium Battery Inverter-battery-knowledge , Large Power

Before you pick any lithium battery inverter manufacturer, make sure to do your homework. It means that you need to do proper research about the manufacturer and perform ...

[WhatsApp](#)



Calculate Battery Size For Any Size Inverter (Using Our Calculator)

Using an inverter that is too large for the battery bank can lead to inefficient performance and reduced battery lifespan. An oversized inverter may draw more power than ...

[WhatsApp](#)

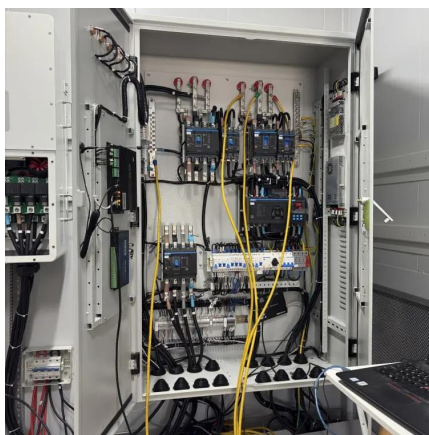




What Size Inverter Can I Run Off a 200Ah Lithium Battery?

Calculate watt-hours by multiplying voltage by amp-hours (e.g., $12V \times 200Ah = 2400Wh$). Select an inverter with continuous power slightly below the battery's max safe ...

[WhatsApp](#)



Understanding Battery Capacity and Inverter Compatibility

When pairing a 100 Ah lithium battery with a 1000 watt inverter, it is crucial to ensure compatibility to achieve optimal performance. Lithium batteries typically offer better ...

[WhatsApp](#)

What is the max inverter size I can use with a 100Ah lithium battery?

When using a 100Ah lithium battery, choosing the right inverter size is key to ensuring efficient and reliable power for your setup, whether it's for off-grid living, RVs, or solar ...

[WhatsApp](#)



What Size Inverter Can I Run Off a 100Ah Lithium Battery?

When using a 100Ah lithium battery, the size of the inverter you can run typically depends on the battery's capacity and the power requirements of your devices. Generally, you ...

[WhatsApp](#)



Calculate Battery Size For Any Size Inverter (Using Our Calculator)

So I have made it easy for you, use the calculator below to calculate the battery size for 200 watt, 300 watt, 500 watt, 1000 watt, 2000 watt, 3000 watt, 5000-watt inverter

[WhatsApp](#)



[Why Can an Inverter Be Too Big for a Battery?](#)

When considering whether an inverter can be too big for a battery, it's essential to understand the implications of mismatched capacities. An oversized inverter may lead to inefficiencies, ...

[WhatsApp](#)

[Lithium Batteries: What Size Inverter Can I Use?](#)

Bottom line, if you want to run large inverter loads above 1000w on a lithium battery, make sure you choose an lithium battery that is designed for larger inverters or a system that can be ...

[WhatsApp](#)





[Can a Battery Be Too Big for an Inverter?](#)

Yes, a battery can be too big for an inverter, leading to inefficiencies and potential safety issues. Oversized batteries may not discharge correctly or could exceed the inverter's ...

[WhatsApp](#)

[Why Choose An Inverter With Inbuilt Battery](#)

An inverter with inbuilt battery is an all-in-one device combining both the inverter and a rechargeable battery within a single unit. This integration eliminates the need for bulky external ...

[WhatsApp](#)



Contact Us

For catalog requests, pricing, or partnerships, please visit:
<https://www.straighta.co.za>