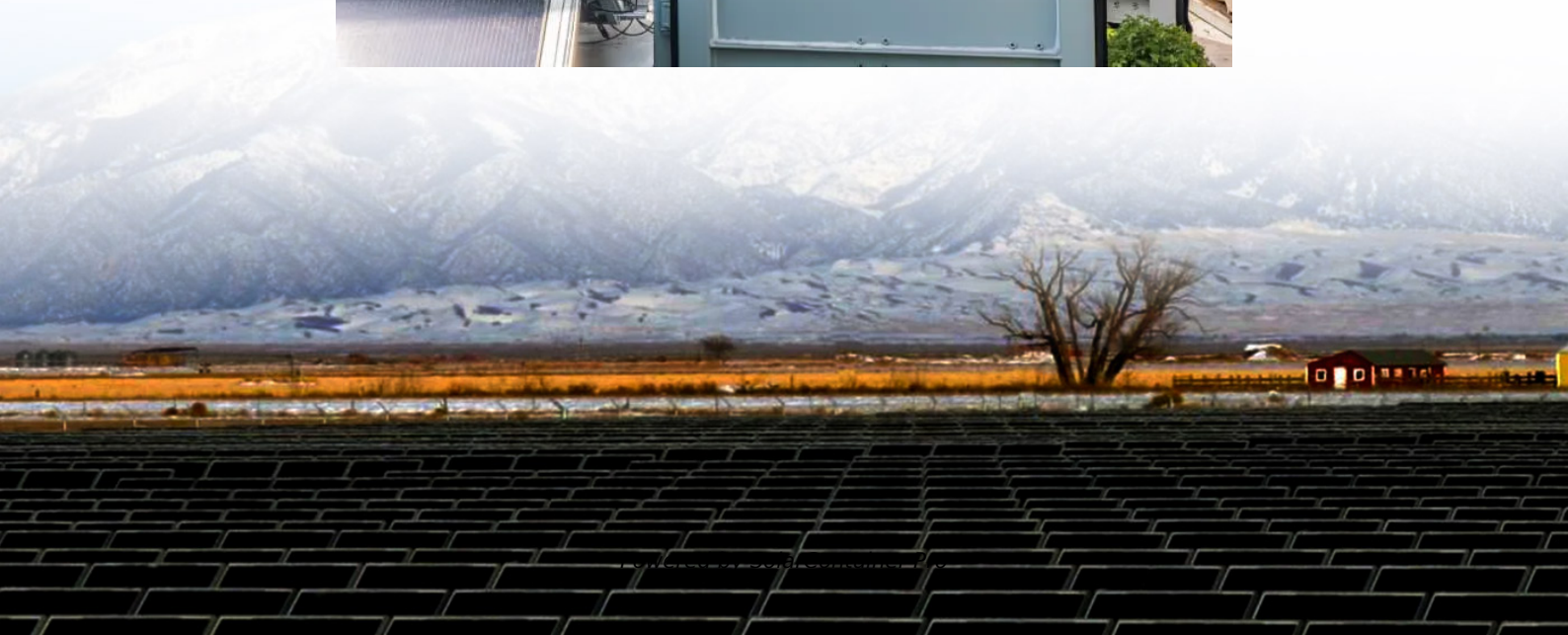


# **How big a solar panel should be matched with the right inverter**





## Overview

---

In most cases, the inverter size should be close to the size of your solar panel system, within a 33% ratio. For example, a 6.6kW solar array often pairs with a 5kW inverter to balance efficiency, cost, and performance. Should your inverter size match your solar panel size?

Match your inverter to your lifestyle, not just your roof. If you're running a fridge, home office, and PS5 all day, size accordingly. If you're barely home, go leaner. Here's the cheat code: your inverter size should usually match your solar panel system's size in kilowatts.

What size solar inverter do I Need?

A 4.5 kW array (or ten 450-watt solar panels) would just about cover your consumption. The type of solar panels you choose can also impact the size of the inverter you need. Different types of solar panels have different wattage ratings and efficiency levels. The three main types of solar panels are monocrystalline, polycrystalline, and thin film.

Why should you choose a solar inverter size?

Inverters play a vital role in converting the direct current (DC) generated by your solar panels into usable alternating current (AC) for your home. Selecting the proper inverter size ensures that your solar system operates at its full potential, ultimately impacting energy savings and system longevity.

How to choose a solar inverter?

Choose an inverter that has a surge watt rating equal to or greater than this value. As for voltage drop, check the wire length between your solar panels and the batteries. If the wire length is long, you may need to choose a lower voltage system (12V, 24V, or 48V) to minimize voltage drop.

Can I use multiple inverters for my solar panel system?

A: Yes, you can use multiple inverters for your solar panel system, commonly



known as a micro-inverter system. This setup allows each solar panel to have its own inverter, optimizing performance and allowing for better energy production, especially in situations where panels may be shaded or facing different directions.

How does the inverter size calculator work?

Our Inverter Size Calculator simplifies this task by accurately estimating the recommended inverter capacity based on your solar panel power and quantity. By inputting your panel's rated power and number of panels, the calculator produces a recommended inverter power range that aligns with 80-100% of your system's total DC capacity.



## How big a solar panel should be matched with the right inverter

---



### How to Choose the Right Size Solar Inverter: Step-by-Step with ...

Wondering what size solar inverter do I need for your solar system? This guide walks you through calculating inverter size based on panel capacity, power usage, and safety ...

[WhatsApp](#)

### Solar Panel Inverter Size Calculator: Know What You Need , Angi

Solar inverters come in different sizes, and you'll need to check the output of your solar energy system to find the perfect match. This guide can serve as a solar panel inverter ...

[WhatsApp](#)



### Solar inverter size: Calculate the right size for your inverter

Inverters work most efficiently when operating near their maximum capacity and are typically sized to be roughly the same size as your solar panels. Inverters are usually sized lower than ...

[WhatsApp](#)



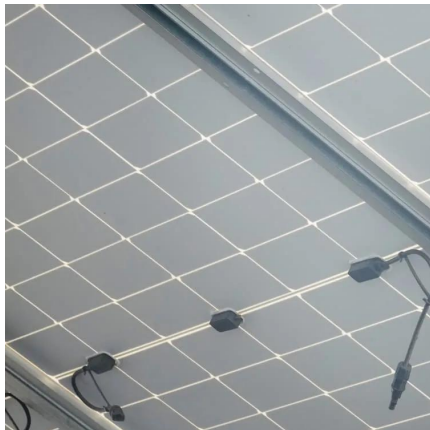
### [What Size Inverter Do I Need for a Solar Panel System?](#)

In this article, we will discuss how to choose the right inverter size for your solar system. Total power of the solar panels. When selecting an



inverter, it is important to first ...

[WhatsApp](#)



### How to Choose the Right Inverter for Your Solar Panel System: A ...

Overview Choosing the right inverter for your solar panel system involves understanding the different types available, their efficiency ratings, and how well they match ...

[WhatsApp](#)

### CALCULATE INVERTER SIZE

How do I choose the right solar panels & inverters? Determining the right sizes for solar panels, batteries, and inverters is essential for an efficient and reliable solar energy system. Accurate ...

[WhatsApp](#)



### How to Size a Hybrid Inverter for Your Home Energy Needs?

Choosing the right hybrid inverter for your home is key to maximizing energy efficiency and getting the most from your solar and battery system. In this easy-to-understand ...

[WhatsApp](#)



## Solar Inverter Sizing Guide for Maximum Efficiency , Mingch

In most cases, the inverter size should be close to the size of your solar panel system, within a 33% ratio. For example, a 6.6kW solar array often pairs with a 5kW inverter to ...

[WhatsApp](#)



### [How to Decide Solar Inverter Capacity for Your Home](#)

The inverter should match your solar panel system's size without the need for oversizing. Off-grid systems: If you're opting for an off-grid setup, you'll need a larger inverter to manage peak ...

[WhatsApp](#)

## Contact Us

---

For catalog requests, pricing, or partnerships, please visit:  
<https://www.straighta.co.za>